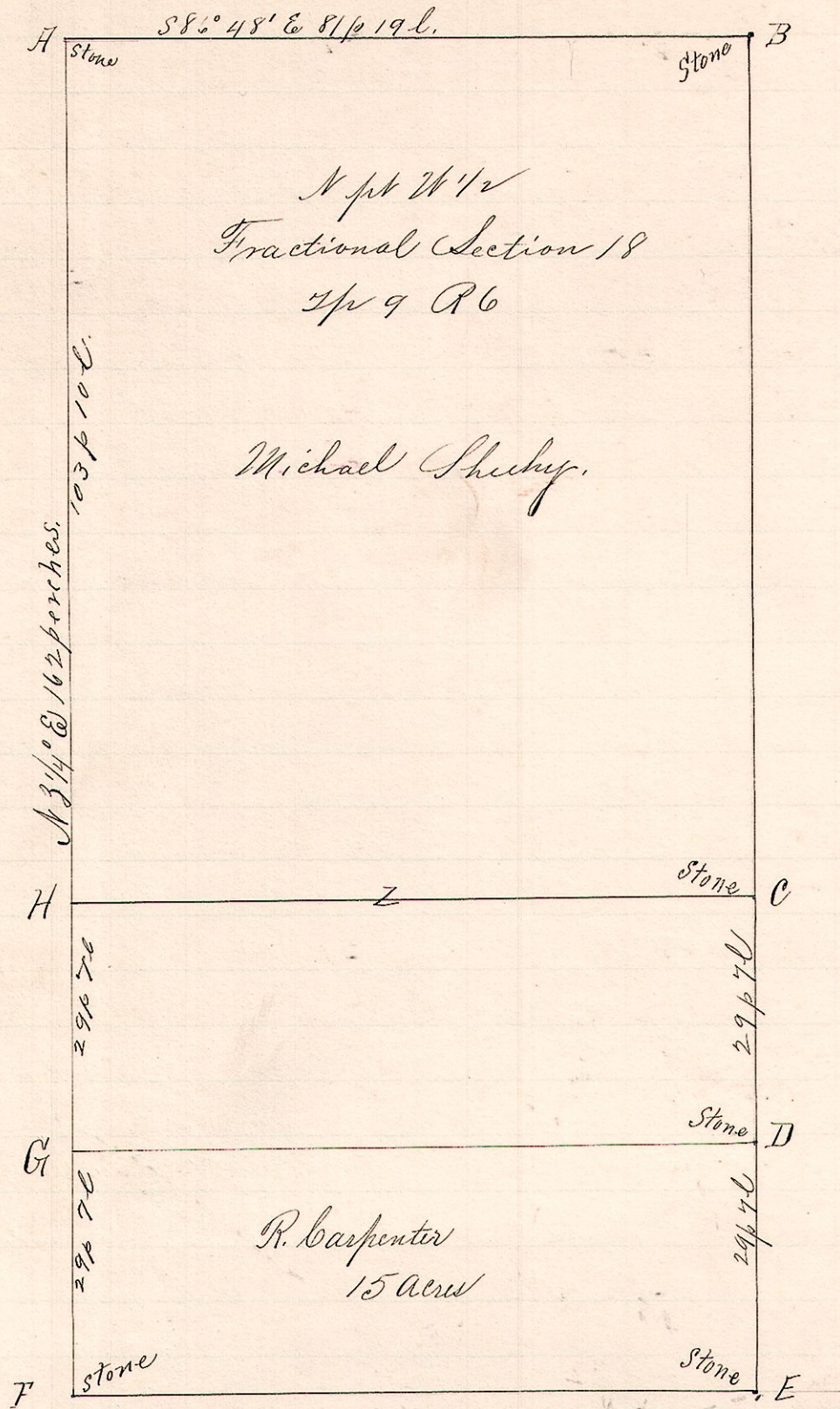


No. 456.

6 9 38 SW 1/4



N pt 1/2
Fractional Section 18
Twp 9 R 6

Michael Shueby.

R. Carpenter
15 acw

Notes

"A", a stone at the southwest corner of the southwest quarter of Fractional Section 18, Twp. 9, R. 6.

"G", a post on west line said Quarter N 3 1/4° E 29 p 7 l. from H

"H", a post on said west line N 3 1/4° E 29 p 7 l. from G

"I", stone at northwest corner of 2^d N 3 1/4° E 103 p 10 l. from H

and N 86° 48' W 81 p 19 l. from B, a stone at NE corner of

the west half said SW Quarter, New Witnesses.

F, - Hickory 4 N 44° W 5 links.

G, - Sugar 16 N 48° E 25 "

Beech 12 S 14° E 23 "

D { Oak 8 N 86 1/2° E 16 l.
Chestnut 13 N 21° E 12 l.

E { Hickory 6 N 36° W 2 1/2
Beech 20 N 58° E 23 "

- Chainmen. -

William H. Gwinn

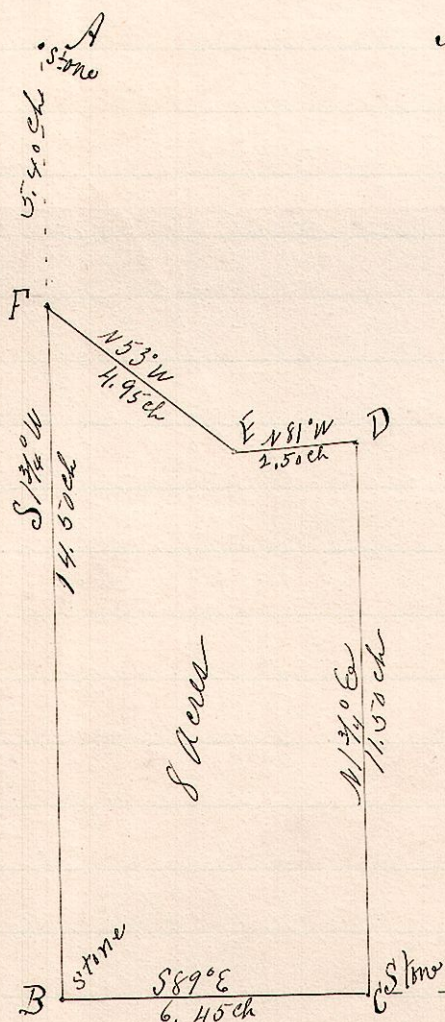
William Sherrick

Surveyed the above for Michael Shueby, et al
Nov. 22, 1892.

Frank H. Gentry,
County Surveyor.

No. 457

13 14 32 SW



Notes.

"A", stone at NW corner lands of John Hoas
B, the place of beginning, a post in the public road S 1 3/4° W 5.40 ch from A.

"B", a stone S 1 3/4° W 14.50 ch from F

"C", a stone S 89° E 6.45 ch " B.

"D", a post in public road N 3 1/4° E 11.57 ch from C

"E", a post in said road N 81° W 2.50 chains from D and S 53° E 4.95 ch from F.

Surveyed for John Smail
and Samuel J. Cutler on the
6th day of Dec. 1892.

Frank H. Gentry,
Co. Surveyor.