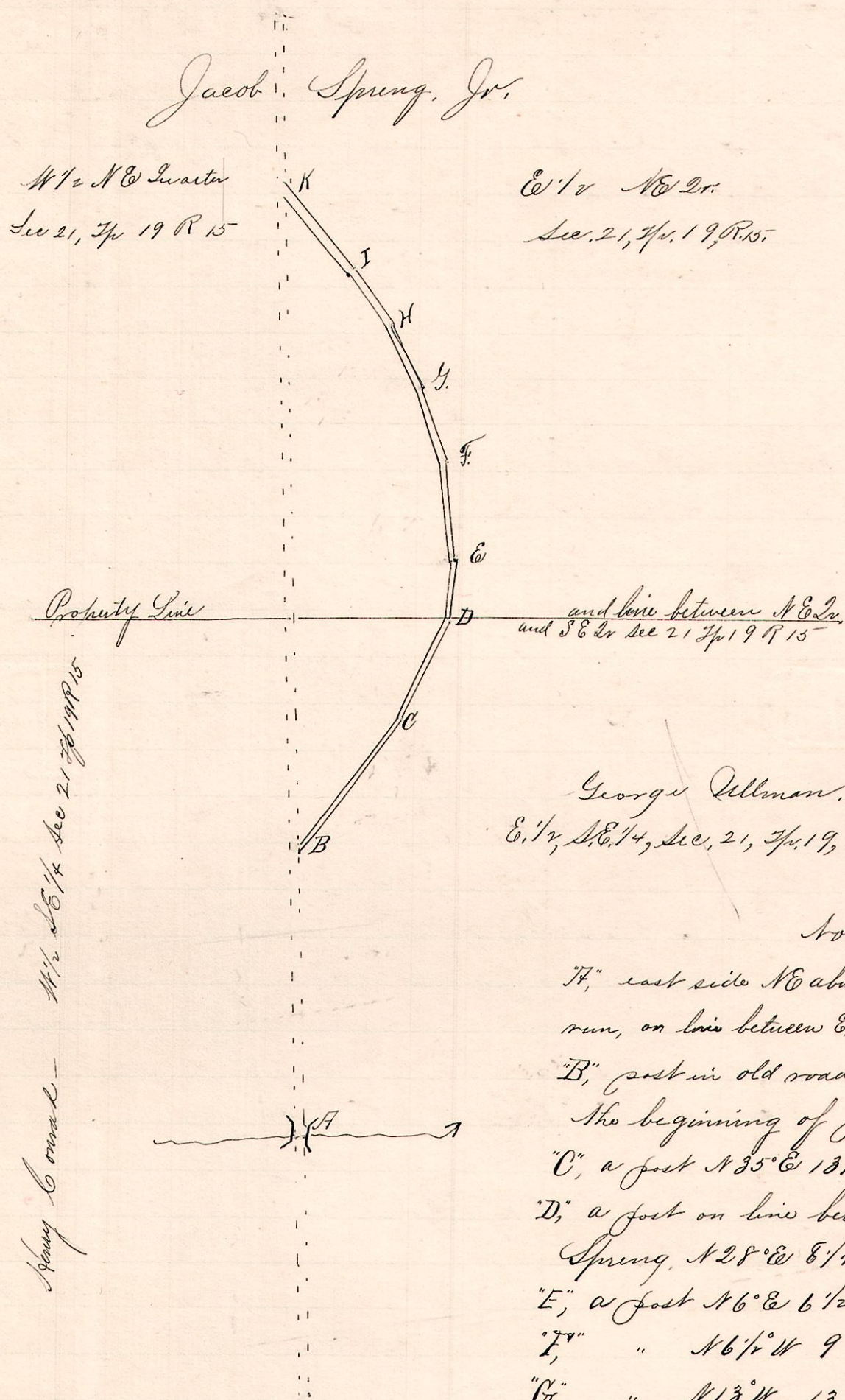


No. 449.

CR 22

R 1/4 Sec 21
15 19 21 N E
S E



George Ullman.
E. 1/2, S. E. 1/4, Sec. 21, Tp. 19, R. 15.

Notes

- "F", east side NE abutment bridge across run, on line between E 1/2 W 1/2 S E 1/4 Sec 21 Tp 19 R 15.
- "B", post in old road N 2° E 25 1/2 rods from A, the beginning of proposed alteration.
- "C", a post N 35° E 13 1/2 perches from B.
- "D", a post on line between Ullman and Spring, N 28° E 8 1/2 rods from C.
- "E", a post N 6° E 6 1/2 " " D.
- "F", " N 6 1/2 W 9 " " E.
- "G", " N 13 W 13 " " F.
- "H", " N 16 W 6 " " G.
- "I", " N 21 W 6 " " H.
- "K", a post in old road, the terminus of proposed alteration is N 24 W 10 1/2 rods from I.

Viewers,
Robert Knox
F. Heyd
R. Winbigler

Shereby certify that the above is a correct and return of the survey of the alteration of a county road petitioned by Henry Conrad et al, as viewed and surveyed Nov. 16th 1892.

Frank H. Gent,
County Surveyor.