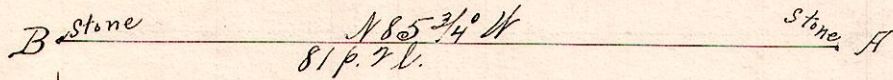


R 2¹/₂ Sec 25
 16 SE SE
 8 8 25 N¹/₂ W¹/₂

No. 447

SE 1/4 Southeast Quarter Sec 16

Peter Stuber.



N E 1/4 North East Quarter
 Sec 25 T⁸ P⁸ R⁸

Louis M. Crosby.

Notes.

"A", a stone at northeast corner section 25 and southeast corner section 16, T⁸ P⁸ R⁸.

"B", a stone at northwest corner northeast quarter of the Northeast Quarter said Sec. 25, N 85 3/4 W 81 p 2 l from B.

- Chairman -
 Martin Gephley } sworn
 Squire Purdy }
 Markes, Jacob B. Gephley

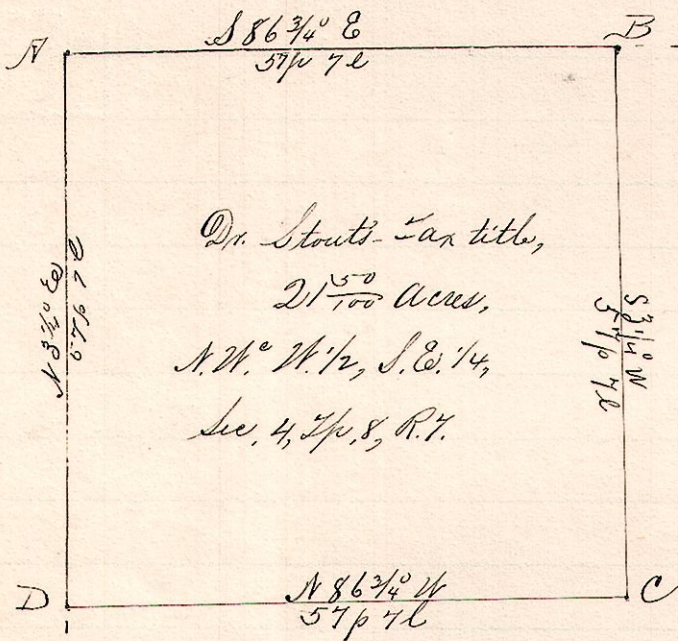
Nov. 2, 1892.

Surveyed the above for Crosby and Stuber.

Frank H. Gault,
 Co. Surveyor.

No. 448.

7 8 4 SE 1/4



Notes.

"A", the northwest corner southeast quarter Sec 4 T⁸ P⁸ R⁷.

"B", a post on A-line said to S 86 3/4 E 57 p 7 l from A.

"C", a post S 83 3/4 W 57 p 7 l from B.

"D", a post on West line said quarter N 86 3/4 W 57 p 7 l from C, and S 83 3/4 W 57 p 7 l from A.

Chairman, (sworn)
 Jonas Didingen
 Sanford Mackey

I hereby certify the above to be a correct plat and description of tax title surveyed for W. C. Stout.
 Nov. 14, 1892.

Frank H. Gault,
 County Surveyor.