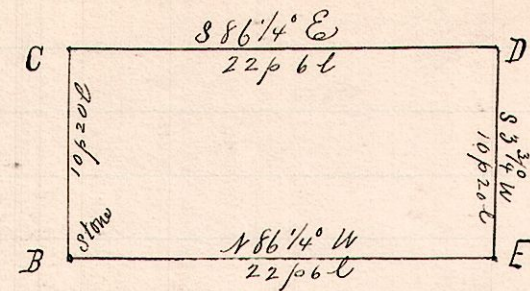


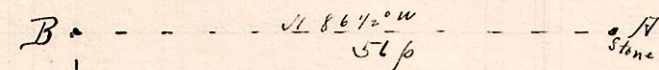
No. 435.

R J S Dr
7 8 21 SE 1/4



N 3 3/4 E
31 p 5 l

Stone



S 3 1/2 W
85 1/2 p

Notes

"A", a stone on County Line at southwest corner of the southeast quarter Sec. 2, T. 8, R. 7.
 "B", the place of beginning is a stone on west line of said Dr N 3 3/4 E 31 p 5 l from A.
 "C", a post on said west line N 3 3/4 E 10 p 20 l. B.
 "D", a post S 85 1/4 E, 22 p 6 l from C.
 "E", a post S 3 3/4 W, 10 p 20 l from D and S 86 1/4 E 22 p 6 l from B.

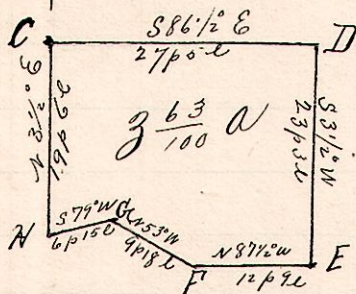
Surveyed the above site for the Bloomfield Joint Sub-District for the Board of Education of Mechanic Twp, Holmes Co., O. August 1, 1899.

J. S. Maxwell & J. H. Doty, chasmen.

Frank H. Genet
County Surveyor.

No. 436.

7 8 21 NW 1/4



Notes

"A", a stone at NE c. N.W. Dr., Sec. 2, T. 8, R. 7.
 "B", post N 86 1/2 W 56 p from A.
 "C", a post, the place of beginning S 3 1/2 W 85 1/2 p
 "D", a post S 86 1/2 E 27 p 5 l from C.
 "E", a post S 3 1/2 W 23 p 3 l " D;
 "F", a post N 87 1/2 W 12 p 9 l " E,
 "G", a post N 53 W 9 p 18 l " F,
 "H" a post S 79 W 6 p 15 l " G
 and S 3 1/2 W 19 p 6 l " C

Surveyed the above for Oliver Shaffer, et al,

August 1, 1899.

Frank H. Genet
County Surveyor.