

No. 432

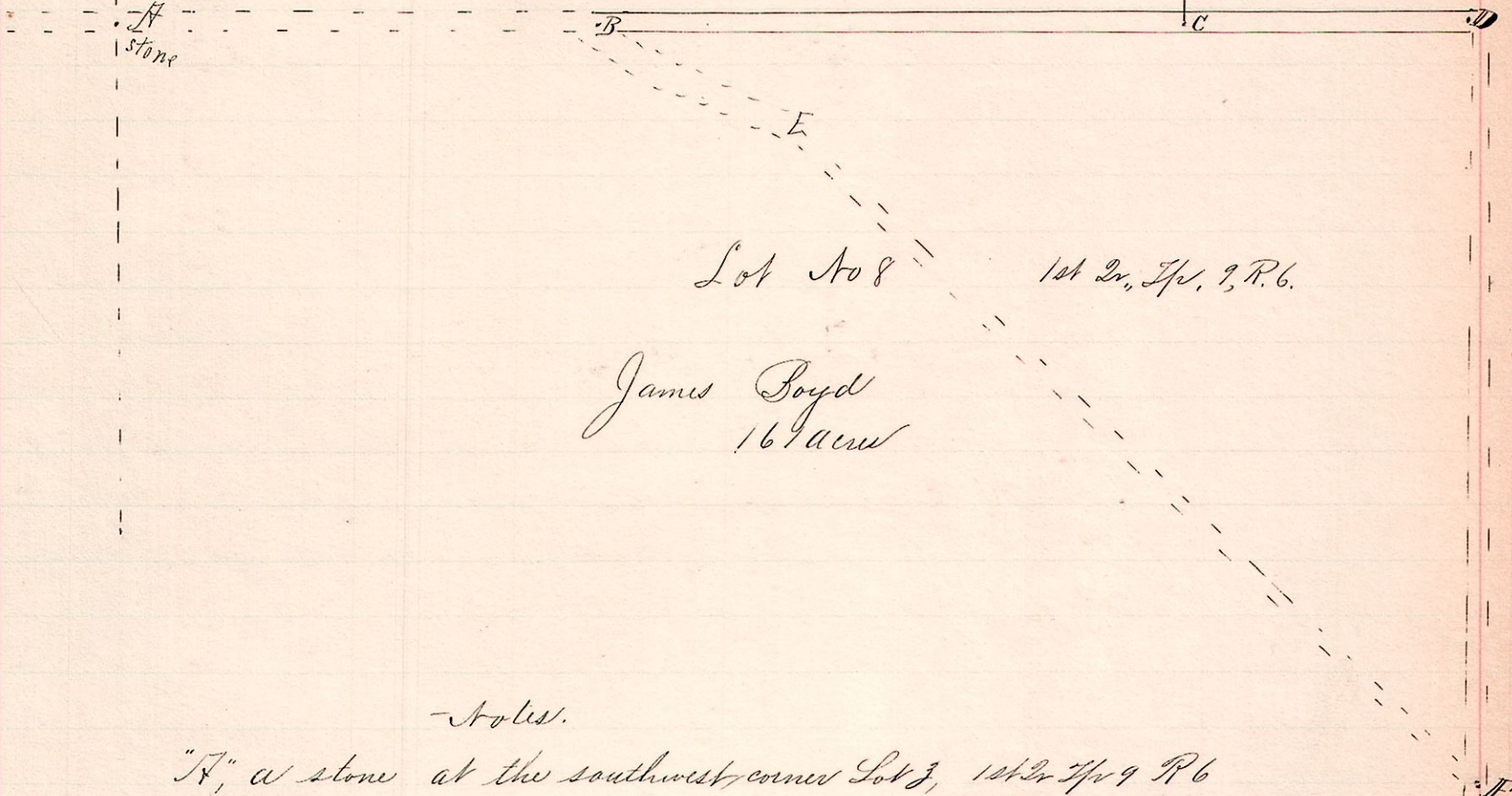
R 2nd 1/2th Sects
6 9 1st 3/8

No Road

Lot No. 3, 1st. 2nd. Tp., 9 R6

James Boyd
124 acres

A. F. Doushel
36 acres



-Notes.

"A," a stone at the southwest corner Lot 3, 1st 2nd Tp 9 R6

"B," is a post in the center of road, the beginning of proposed extension S86 1/2° E 57 perches from A.

"C," a stone on line between Lots 3rd & 8, S86 1/2° E 69 p. 80 from B.

"D," the terminus of route, is a post in the public road, the southeast corner of Lot 3rd & 6 Northeast corner Lot 8 S86 1/2° E 36 p. 90 from C.

BCD, is the line of proposed dedication; width of dedication 40 ft.

The broken line BEF, represents part of old road to be vacated.

I hereby certify the above to be a correct plat of the Dedication made by Abraham Doushel and James Boyd, for the purpose of a County Road, July 22, 1892.

Frank H. Gust,
County Surveyor,
Adams Co., O.