

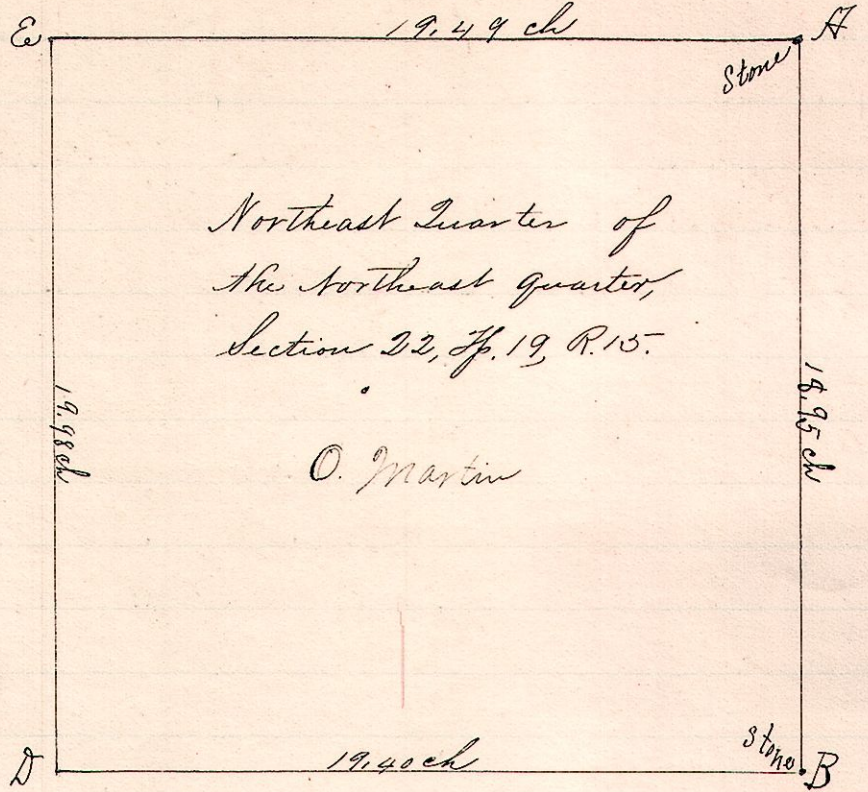
No. 417.

F. Stone

Notes

"A", a stone at N.E. 1/4 sec 22, Tp 19 R. 15
 "B", a stone on east line said 1/2 section, the
 half 1/2 corner 18.95 chains south of C.
 "C", is the southeast corner said N.E. 1/2 section.
 "D", a post 19.40 chains west of B
 "E", a post on north line N 84° W of A
 19.49 ch and N 1° E 19.98 ch. from D.
 Witness to E - Hickory 1553° E 9 link
 " " D - Hickory 145° E 17 "
 "F" is a stone at the north quarter
 corner said section 22.

R Tp Sec 22
 15 19 22 NE NE



Surveyed the above Northeast Quarter of N.E. 1/2 Sec. 22,

June 23, 1892.

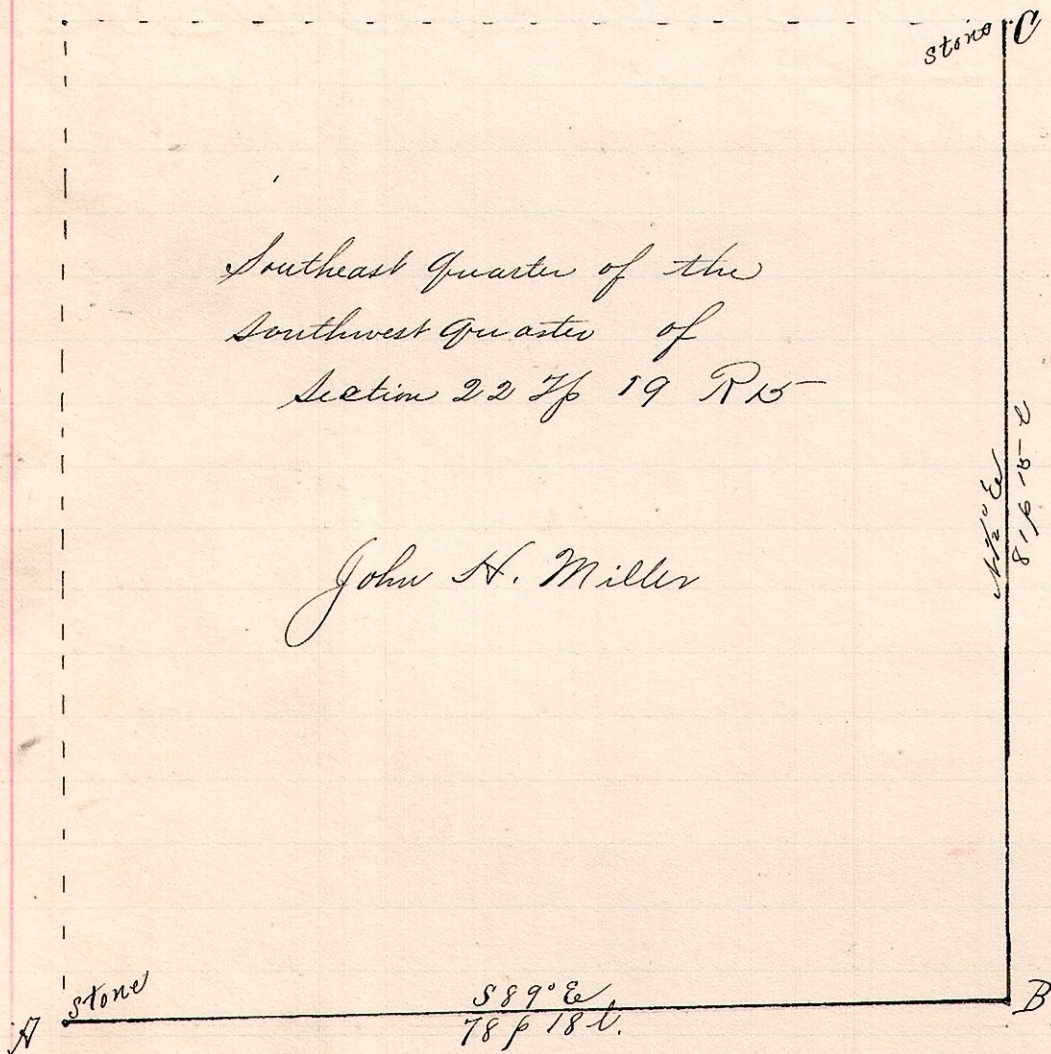
Frank H. Gunt
 County Surveyor.

No. 418.

Southeast Quarter of the
 Southwest Quarter of
 Section 22 Tp 19 R 15

John H. Miller

15 19 22 SW SE



- Notes -

"A", is a stone on the south line of said 1/2 sec. the south half 1/2 corner.
 "B", a post in a spring run S 89° E of A 78 p 18 l Found stumps of original witnesses taken by Edgar in April 1861.
 "C", a stone at N.E. corner said Southeast 1/2 SW 1/2 N 1/2° E 81 p 15 l from B.

Surveyed the east and south lines for John H. Miller

June 23rd 1892.

Frank H. Gunt
 Co. Surveyor