

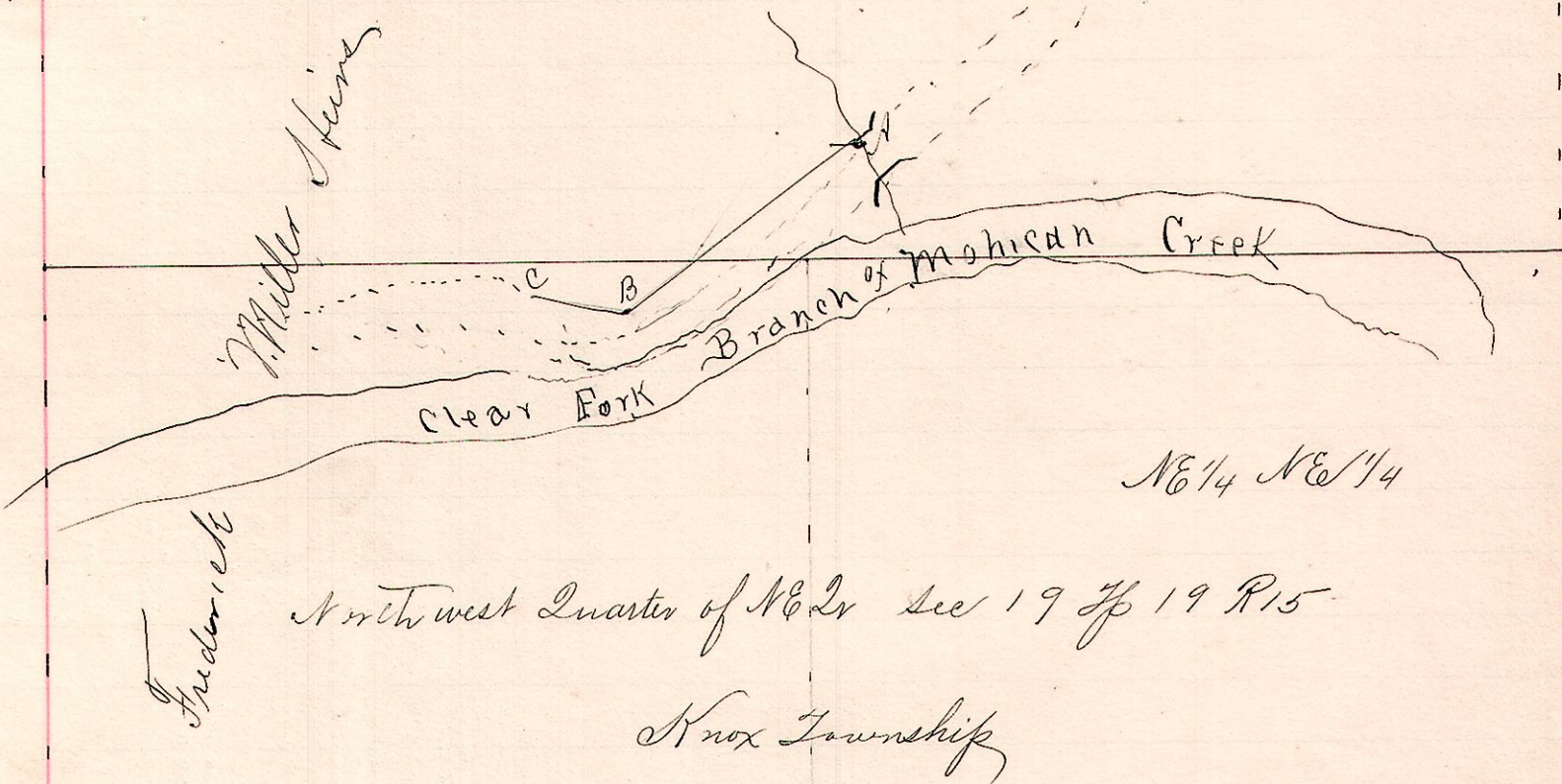
No. 405.

TR 258

South half Southeast 2^d Sec 18 Tp 19 R 15

Washington Tp

R 7p Sec 2v
18 SE 5/4
15 19 19 NE NW



- Notes -

"A" is a stone 4 feet north of north end of a stone culvert in public road, in south half southeast quarter Sec. 18, Tp. 19, R. 15.
 "B" a post South 56 1/2 degrees west 30 perches from "A".
 "C" a stone in the northwest quarter of the northeast quarter of Section 19, Tp. 19 R 15 North 79 degrees west 10 p from B.
 The dotted line indicates the old road.

The line AB and BC is the north line of land dedicated by Catherine Miller, agent of the heirs of Frederick Miller deceased. Said land to be appropriated for a public road, a part of the road south of said line having been torn away by the Creek. Dedicated to Commissioners of Holmes County Ohio June 27 1892.
 Surveyed May 16, 1892.

Frank H. Gault
 County Surveyor.