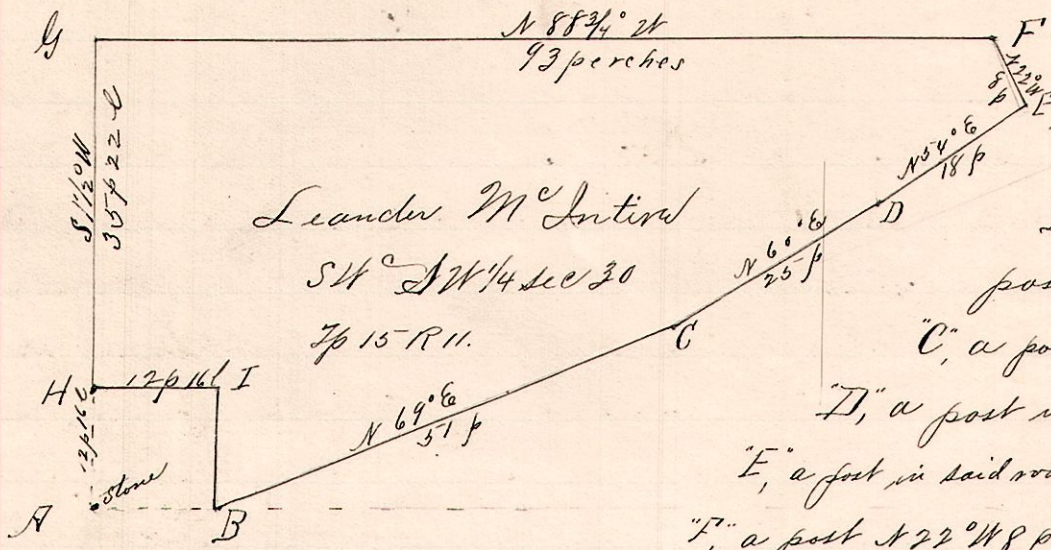


No. 398.

DR 7p Sec 20 pt
11 15 30 SW SW



Leander M Intire
SW 1/4 Sec 20
Tp 15 R 11.

Notes.

"A", is a stone at the SW corner of the SW 1/4 Sec 20, Tp 15 R 11.
 "B" the place of beginning is a post on south line S 89° E 12 p 16 l.
 "C", a post in Massillon Road N 69° E 51 p.
 "D", a post in said road N 60° E 25 p.
 "E", a post in said road N 54 1/2° E 18 p.
 "F", a post N 47 1/2° E 80 p;
 "G", a post on west line N 88 3/4° W 93 perches from F.
 "H", a post on said west line 85 p 22 l S 1 1/2° W 9 1/2 12 p 13 l north of H.
 "I", a post 12 p 16 l east of H and north of B.

Surveyed the above for Leander M. Intire, et al
April 20, 1892.

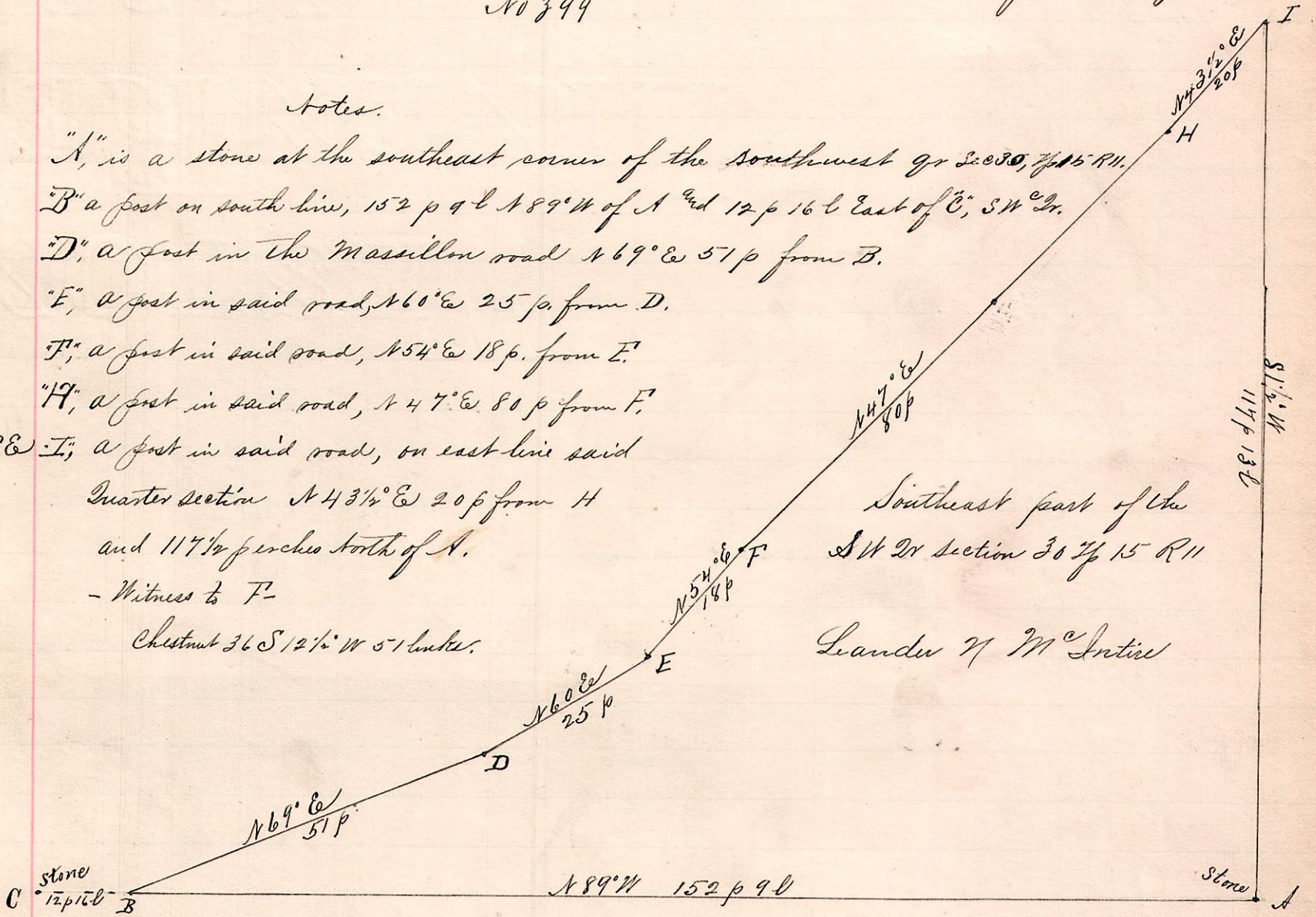
Frank H. Genet,
County Surveyor.

No. 399

Notes.

"A" is a stone at the southeast corner of the southwest 1/4 Sec 20, Tp 15 R 11.
 "B" a post on south line, 152 p 9 l N 89° W of A and 12 p 16 l East of C, SW 1/4.
 "D", a post in the Massillon road N 69° E 51 p from B.
 "E", a post in said road, N 60° E 25 p from D.
 "F", a post in said road, N 54 1/2° E 18 p from E.
 "H", a post in said road, N 47 1/2° E 80 p from F.
 "I", a post in said road, on east line said Quarter section N 43 1/2° E 20 p from H and 117 1/2 perches north of A.
 - Witness to F -
 Chestnut 36 S 1 1/2° W 51 links.

11 15 30 S W S E



Southeast part of the
SW 1/4 section 20 Tp 15 R 11
Leander M Intire

Surveyed the above for Leander M. and Joseph S. M. Intire,
April 21, 1892.

Frank H. Genet,
County Surveyor.