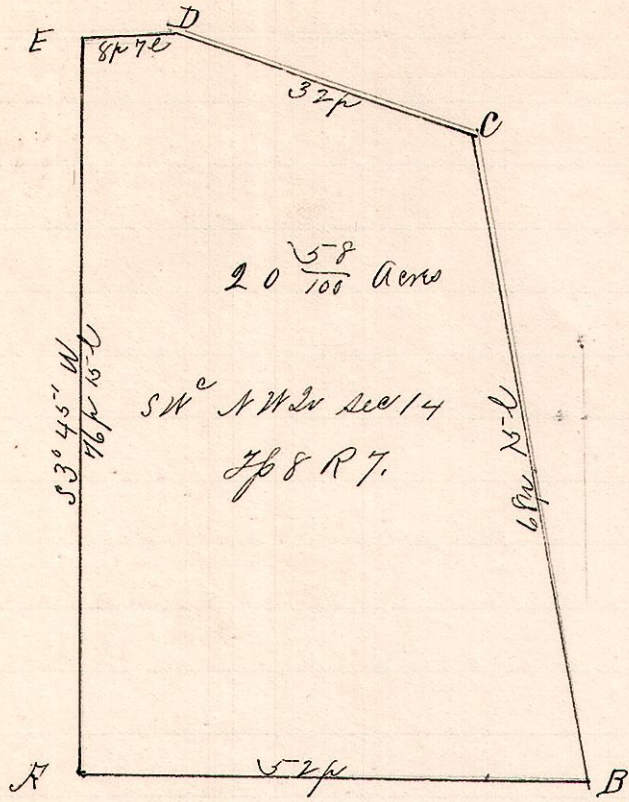


No. 395.

R 7p Sec Dr Pt  
7 8 14 NW SW



- Notes -

"A" is the southwest corner of the north-west quarter of Sec. 14 Tp 8 R 7.  
 "B", a post on South line and in the public road is S86 1/4° E 52 p from A.  
 "C", a post in said road N6°W 68 p 15 l from B  
 "D", a post in said road N69°W 32 p " C.  
 "E", a post in said road, on west line, N89°W 8 p 7 l from D and N3°45' E 76 p 15 l from A, the place of beginning and containing 20 5/100 Acres.

Sta	Bearing	Dist	Latitude		Departure		Corrected D.M.D.	N Areas	S Areas
			+ N	- S	E +	- W			
1	S 3° 45' W	76.6	76.44		5.01	-76.44	-5.1		389.844
2	S 86° 15' E	52.0		3.40	51.89		-3.40	+51.2	174.080
3	N 6° W	68.6	68.73		7.17	68.23	7.3	95.1	6488.672
4	N 69° W	32	11.47		29.87	11.47	30.36	57.44	658.887
5	N 89° W	8.3	.14		8.30	.14	8.44	18.64	7.610
			79.84	79.84	51.89	54.36		7150.120	563.924
					50.35	1.04		563.924	
								26586.196	
								160   3293.098	20 5/100 Acres
								320	
								930	
								800	
								1309	
								1980	

March 15, 1892.

Surveyed for Mrs. Simon and R. J. Chapman

Frank H. Gant,  
County Surveyor.