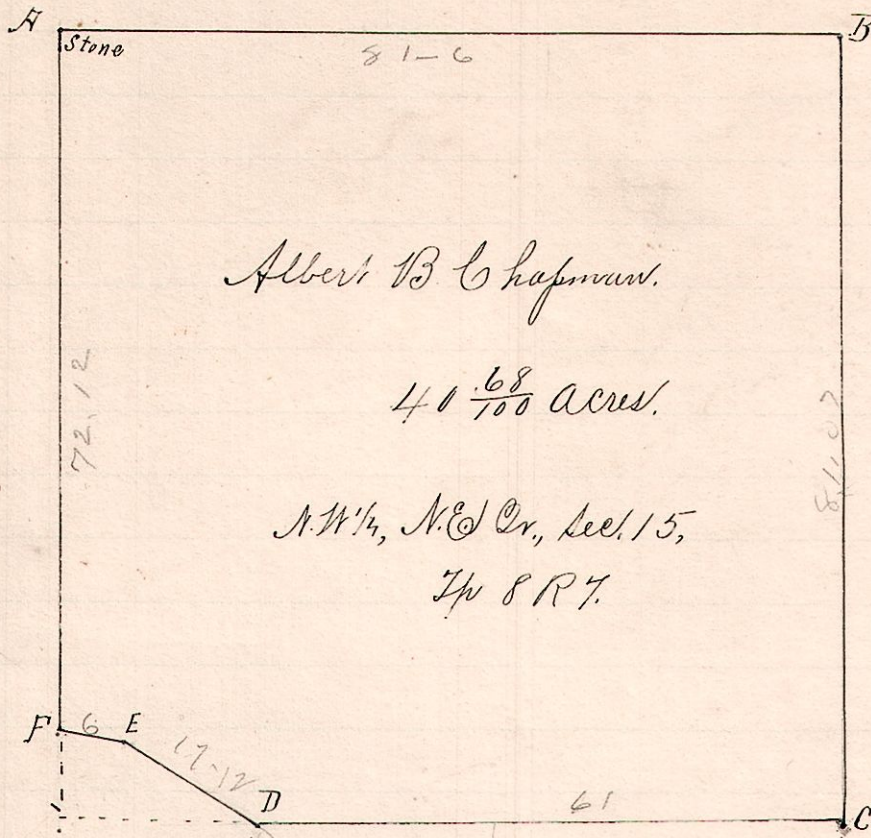


No. 392.

R 7th Sec 2^d T^h
7 8 15 N&S W



Albert B Chapman.

40 ⁶⁸/₁₀₀ acres.

N^W/₄, N&S Cr., Sec. 15,
T^h 8 R 7.

Notes.

"A," is a stone at the NW corner of the Northwest quarter Sec. 15, T^h 8 R 7.
 "B," the holey 2^d post is S 86³/₄° E 81 p 6 l.
 "C," a post at the S&E N^W/₄ N&S Cr said Sec 15, is S 3¹/₄° W 81 p 7 l.
 "D," a post, on 1/4 2^d line in the public road N 86³/₄° W 61 p from C.
 "E," a post in said road is N 51¹/₂° W 17 p 12 l from D.
 "F," a post in said road on W line of said 2^d N 73° W 6 p from E and S 3¹/₄° W 72 p 12 l from A.

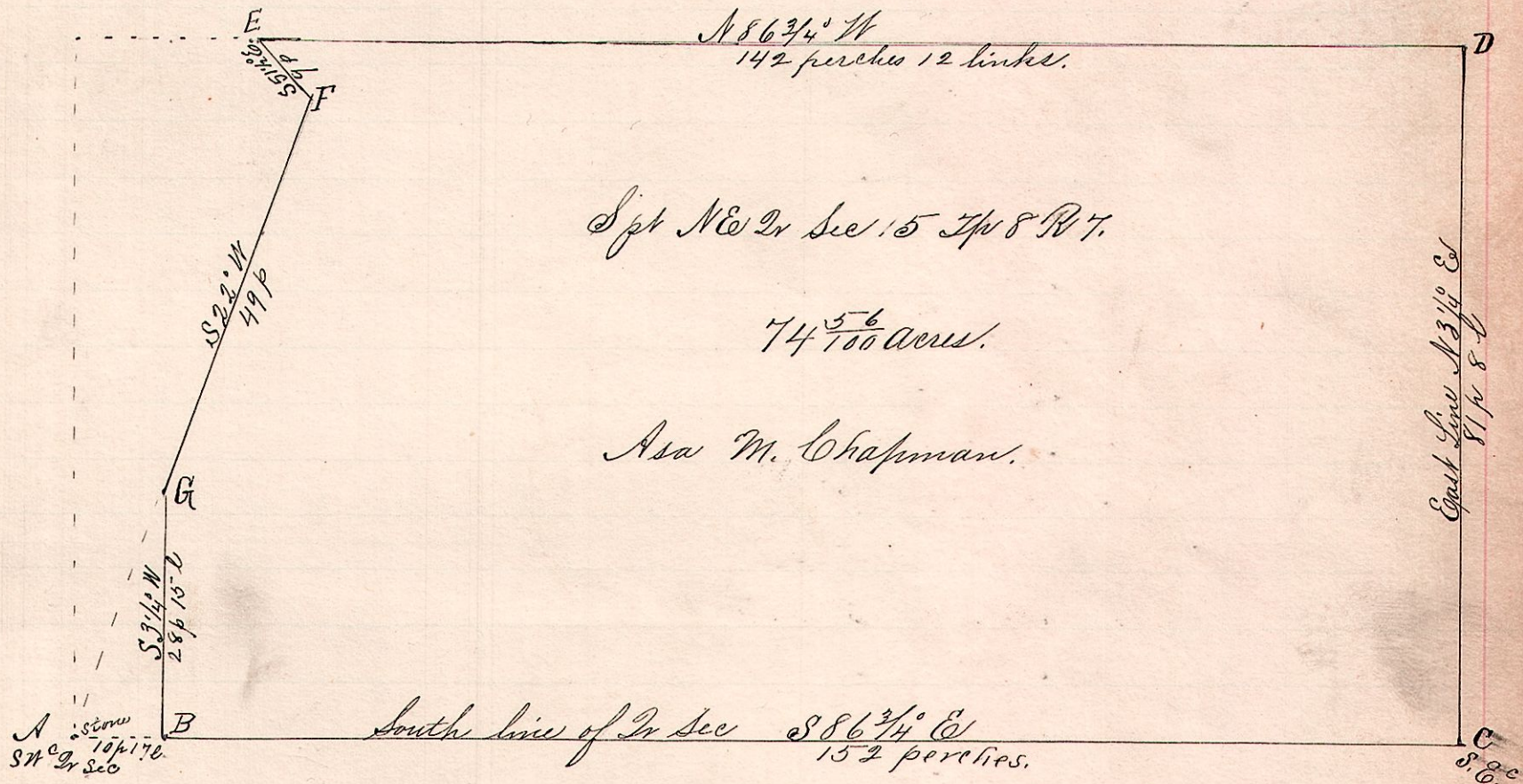
March 15, 1892.

Surveyed the above for A. B. & A. M. Chapman

Frank H. Genet
County Surveyor.

No. 393.

7 8 15 N&S Spt



Spt N&S 2^d Sec 15 T^h 8 R 7.

74 ⁵⁶/₁₀₀ acres.

Asa M. Chapman.

A stone
SW 2^d Sec

South line of 2^d Sec S 86³/₄° E
152 perches.

March 15, 1892.

Surveyed the above for Asa M. & A. B. Chapman

Frank H. Genet,
County Surveyor.