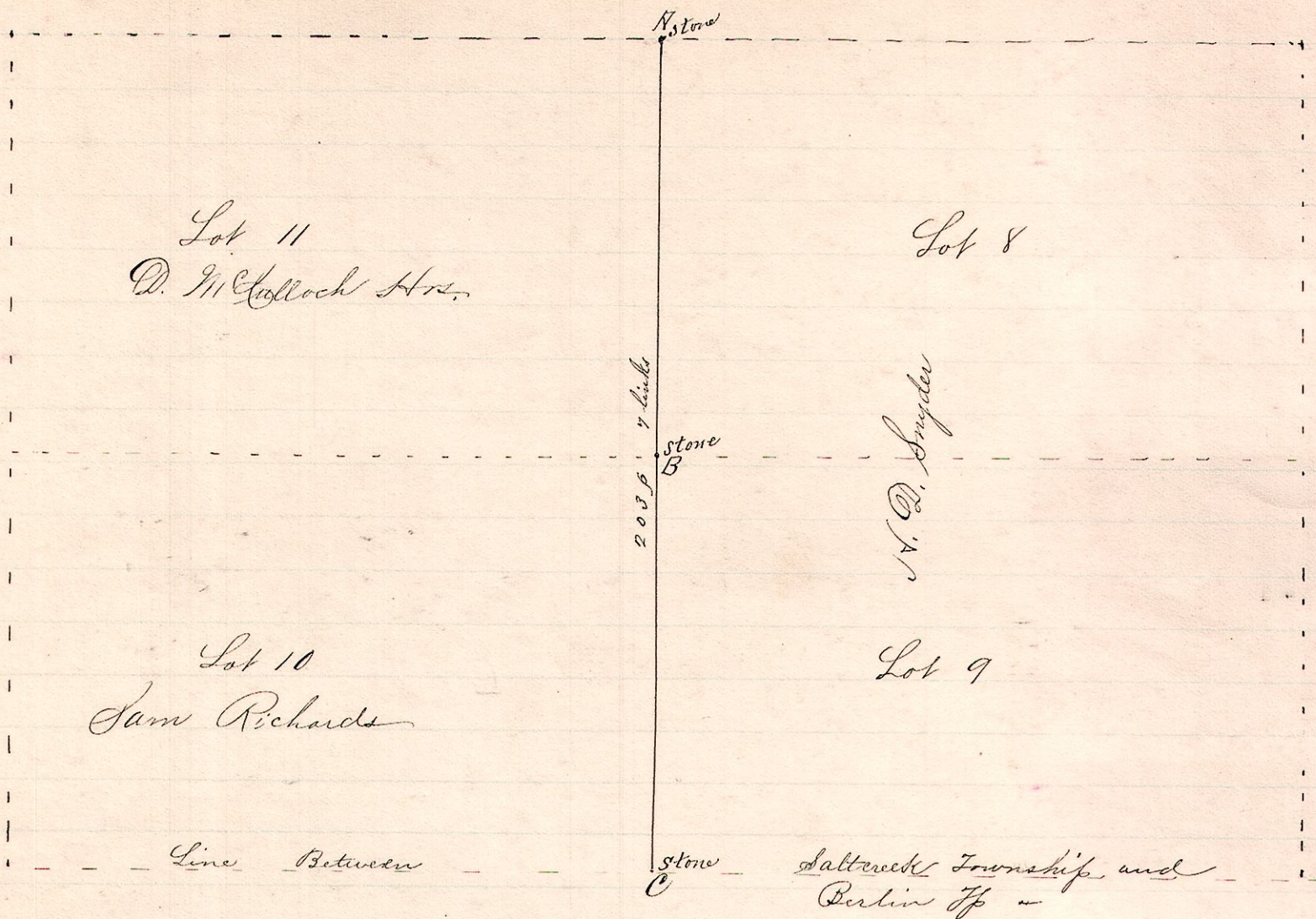


No. 383.

R 7th 2nd Lots
6 10 4th 8th 9th 10th 11

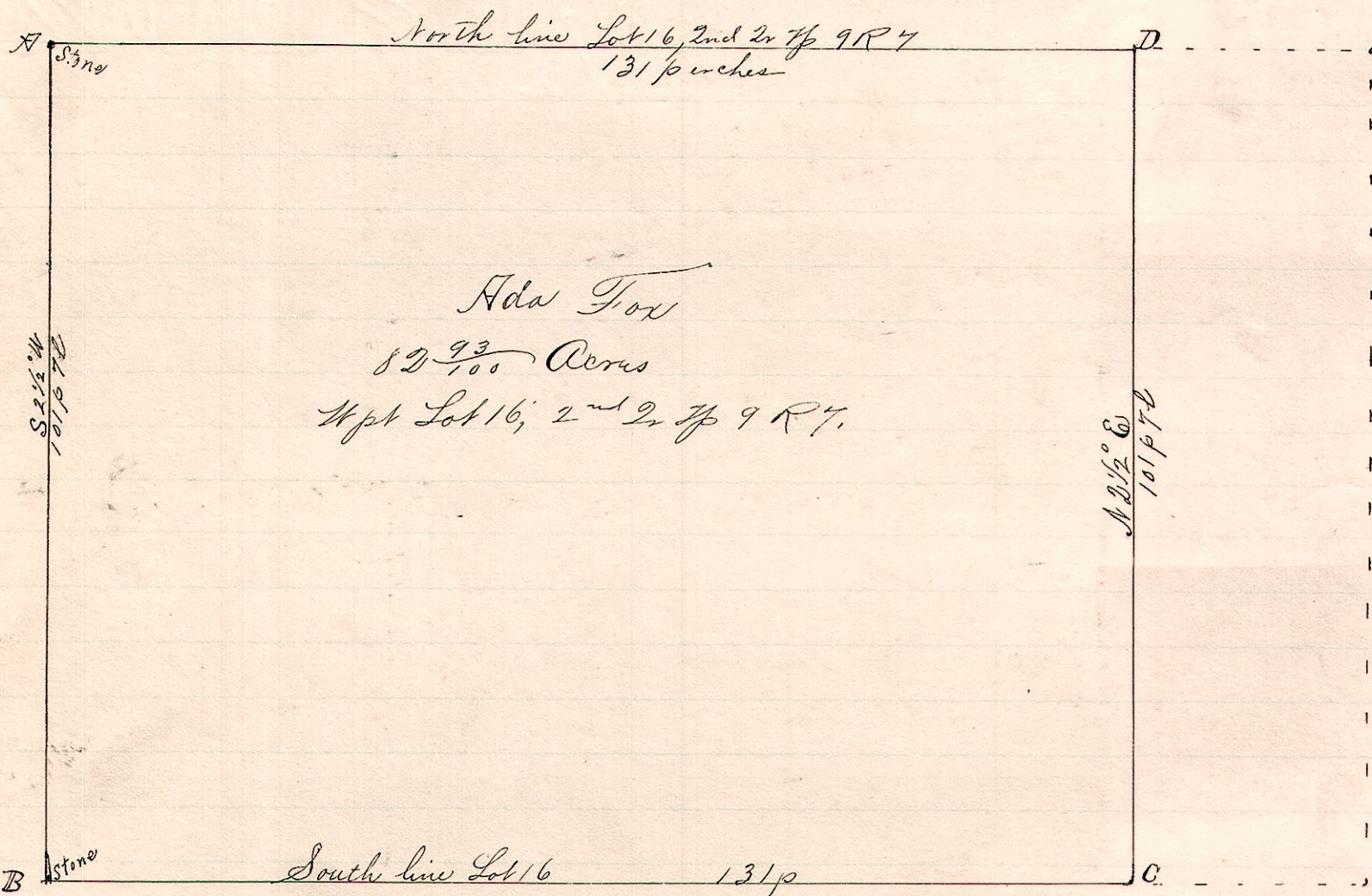


Surveyed the line AB, between Lots 8th and 9th on the east and 10th and 11th on the west by request of N. D. Snyder, to determine the center line of new county road and distance said road extends each side said line. Surveyed Feb. 26th 1892.

Frank H. Genet,
County Surveyor.

No. 384.

R 7th 1st Lot
7 9 2nd 16



Ada Fox
82 ⁹³/₁₀₀ Acres
Wpt Lot 16; 2nd 2nd Tp 9 R 7.

Surveyed for Fox and others (Mrs. J. M. E. Gray) March 22nd & 23, 1892.

Frank H. Genet,
County Surveyor.