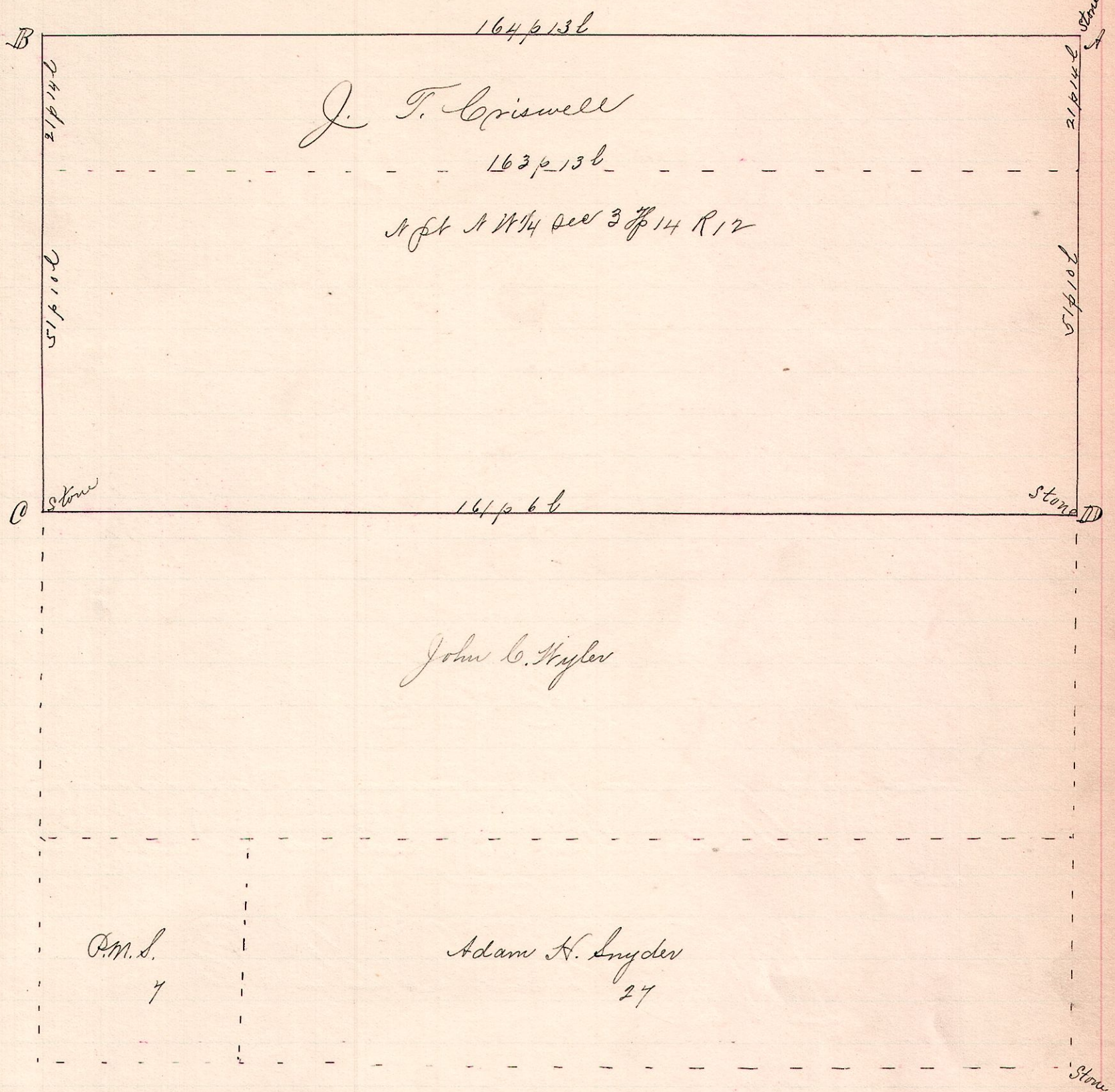


No. 375.

R 7th Sec 14
12 14 3 NW 1/4



Notes
 AB is the north line of the NW 1/4 of section 3, T7N R12.
 AD " " East " " " " " " " along the road
 BC " " West " " " " " " " " "
 CD is parallel to AB.

The foregoing plat and notes of a survey made Oct 9th 1891 for J. T. Criswell, et al.
 Frank H. Guest, Co. Surveyor,
 Holmes County Ohio.