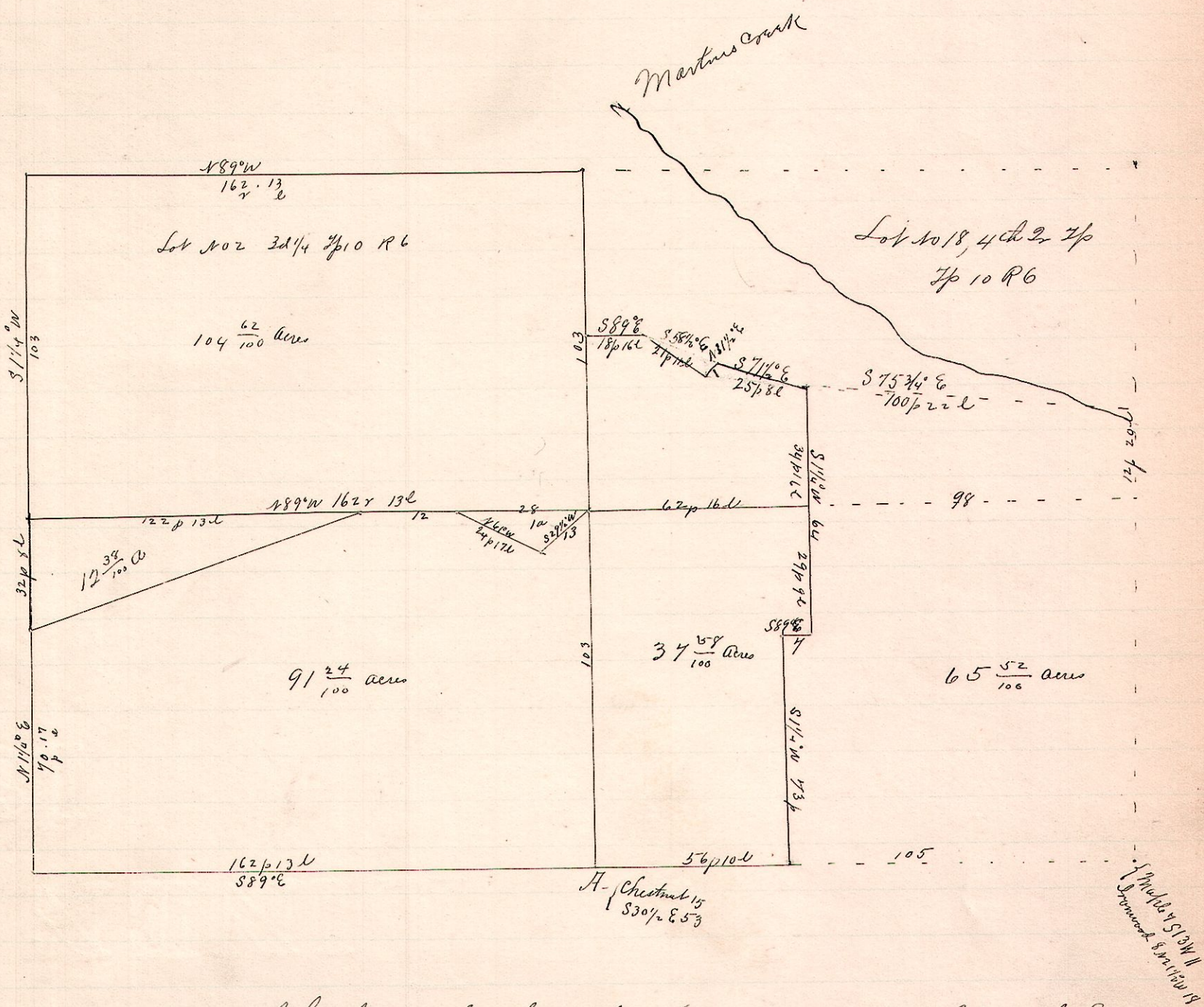


No. 372.

R 7p 2r 2 Lots
6 10 { 3rd 19th 2
4th 17th 18



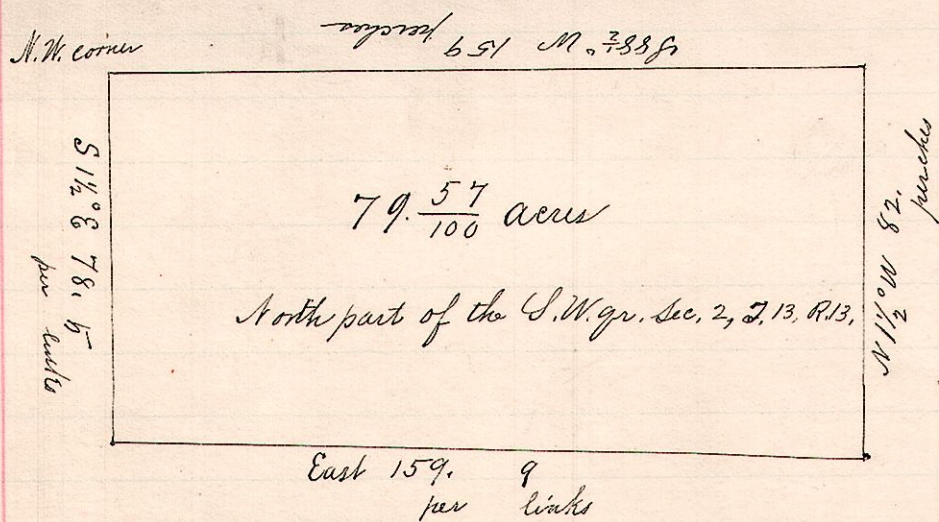
I hereby certify that the above is a correct plat of Lots number 1 and 2 of the 3d Tr. 7p of Tp 10 R. 6, each containing $104 \frac{62}{100}$ acres; Also the west part of Lot No. 17 in 4th Tr. 7p of Tp 10 R. 6 containing $37 \frac{57}{100}$ acres, and the southwest part of Lot No. 18, in 4th Tr. 7p of Tp 10 R. 6, containing $17 \frac{52}{100}$ acres.
Oct. 9, 1856.

Samuel Robinson, Surveyor.

Platted the above by request of Abraham Mast,
Frank H. Genet
Co. Surveyor.

No. 373.

13 13 2 SW Apt



An exact copy of a plat of Samuel Robinson.
A Survey made about 1849.
By request of Thomas Easley

Frank H. Genet
County Surveyor.