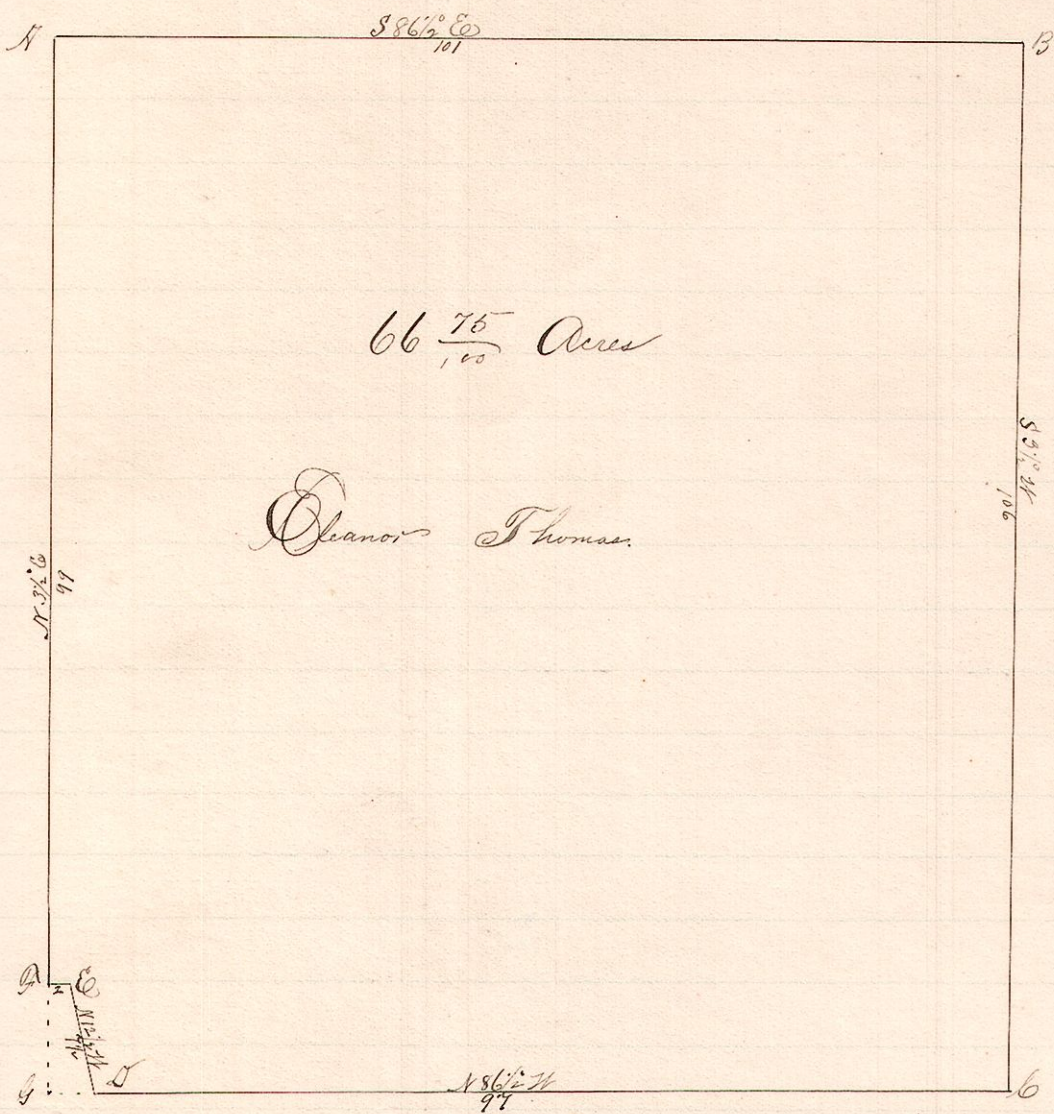


No. 361

99 4th 41

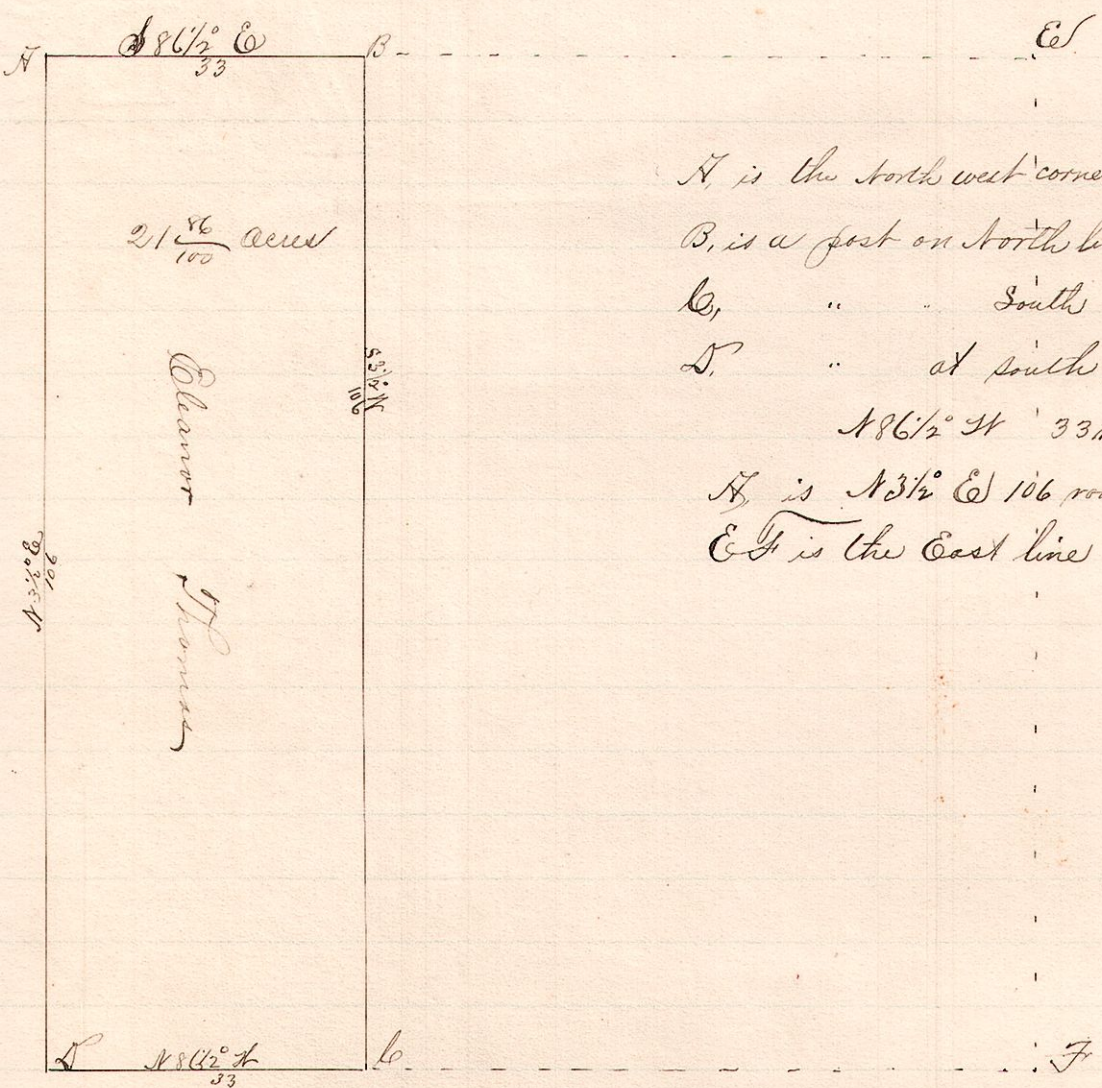


Notes
 A, N.W. cor Lot 41, 4th 4 1/2 99
 B, N.E. cor said Lot 41 is
 S 86 1/2 E 101 rods from A.
 C, S.E. cor, S 3 1/2 W 106 rods .. B.
 D, on S line, is N 86 1/2 W 99 .. C
 E, is N 1 1/2 W 1 1/2 rods from D
 F, N 86 1/2 W 2 rods from E on W line
 G, is N 3 1/2 E 99 rods from F
 H, is the S.W. cor. of Lot 41.
 I, is along the line of
 the Public Road
 leading from
 Black creek to
 Nashville.

Sept. 16, 1891. Surveyed the above for Eleanor Thomas et al.
 Frank H. Genet, Co. Surveyor.

No. 362

99 4th 32 1/2



A, is the south west corner of Lot 32, 4th 2 1/2 99
 B, is a post on North line said Lot S 86 1/2 E 33 rods from A
 C, .. South S 3 1/2 W 106 .. B
 D, .. at south west corner of said lot
 N 86 1/2 W 33 rods from C.
 E, is N 3 1/2 E 106 rods from D.
 F, is the East line said Lot

Sept. 16, 1891. Surveyed the above for Eleanor Thomas et al.
 Frank H. Genet
 County Surveyor.