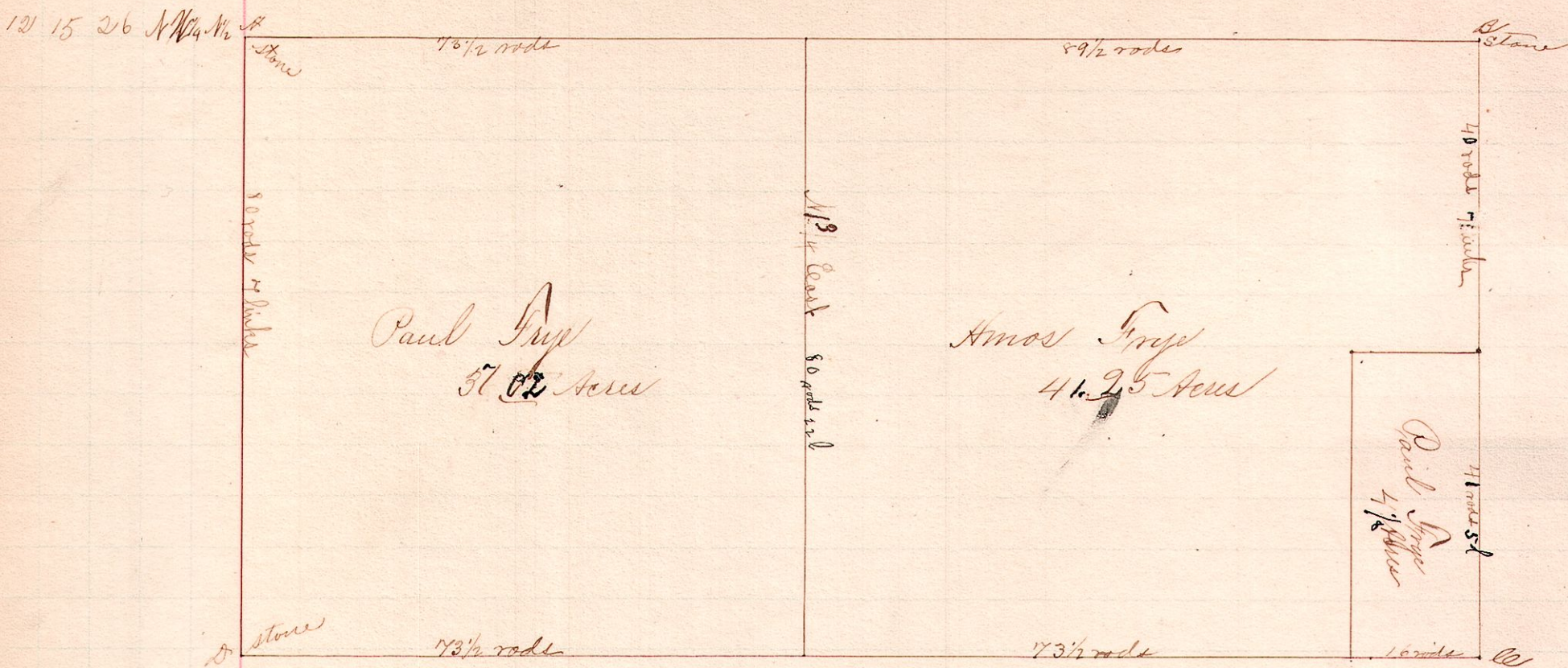


~ 340 ~



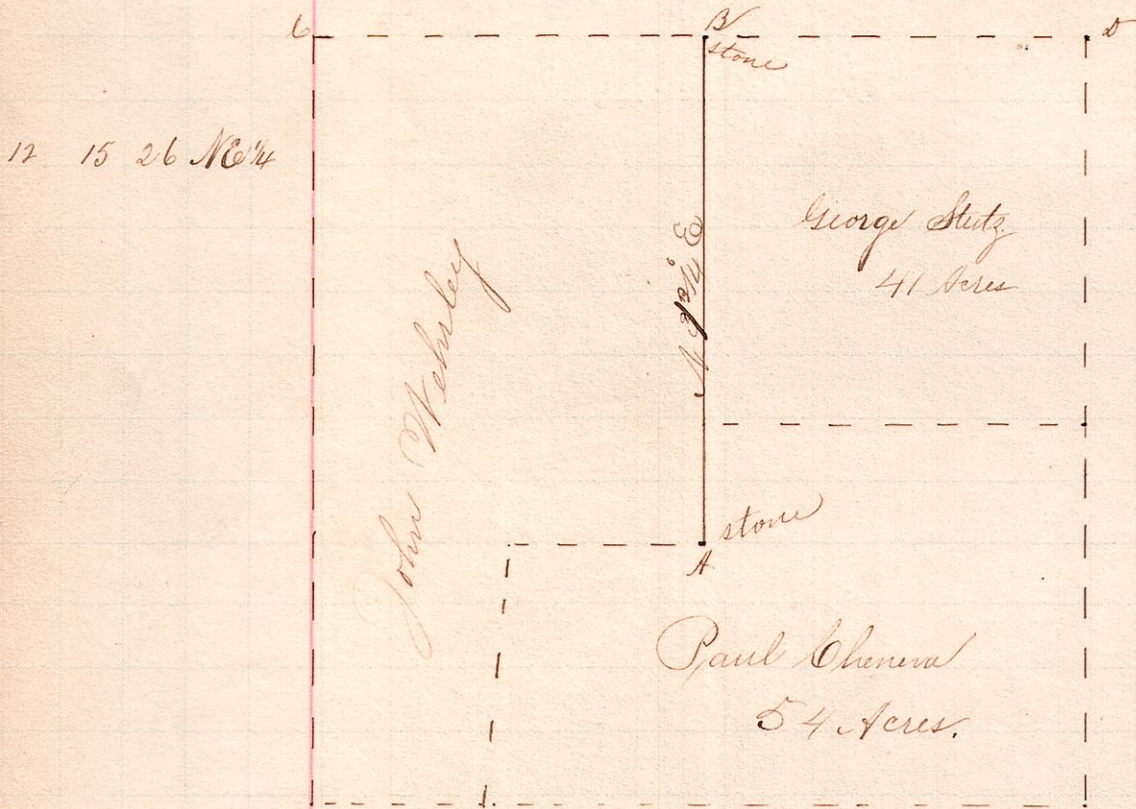
~ Description ~

Beginning at A, at the N.W. corner of Section 26, Township 15, Range 12.
 AB is the county line between Holmes and Wayne Counties.
 Run the lines AB, BC, CD and DB. Planted stone at C. Took new
 witnesses at A and B. - At A, - Sugar 15 N 81 1/2 W 31 links.
 At B, - Hickory 18 N 61 W 40 and Chestnut 24 N 40 E 27.

Surveyed and divided the above tract as indicated for
 Paul and Amos Frye, June 26, 1891.

Frank H. Genet,
 County Surveyor.

~ No. 341 ~



~ Notes ~

CD is the County line - Wayne and Holmes
 At B and A the corners were in good
 condition, at B The witness tree,
 a gum 18 N 10 E 7 is still standing.

Surveyed the above for John Wehley, to determine
 the line AB, June 26, 1891.

Frank H. Genet,
 County Surveyor.