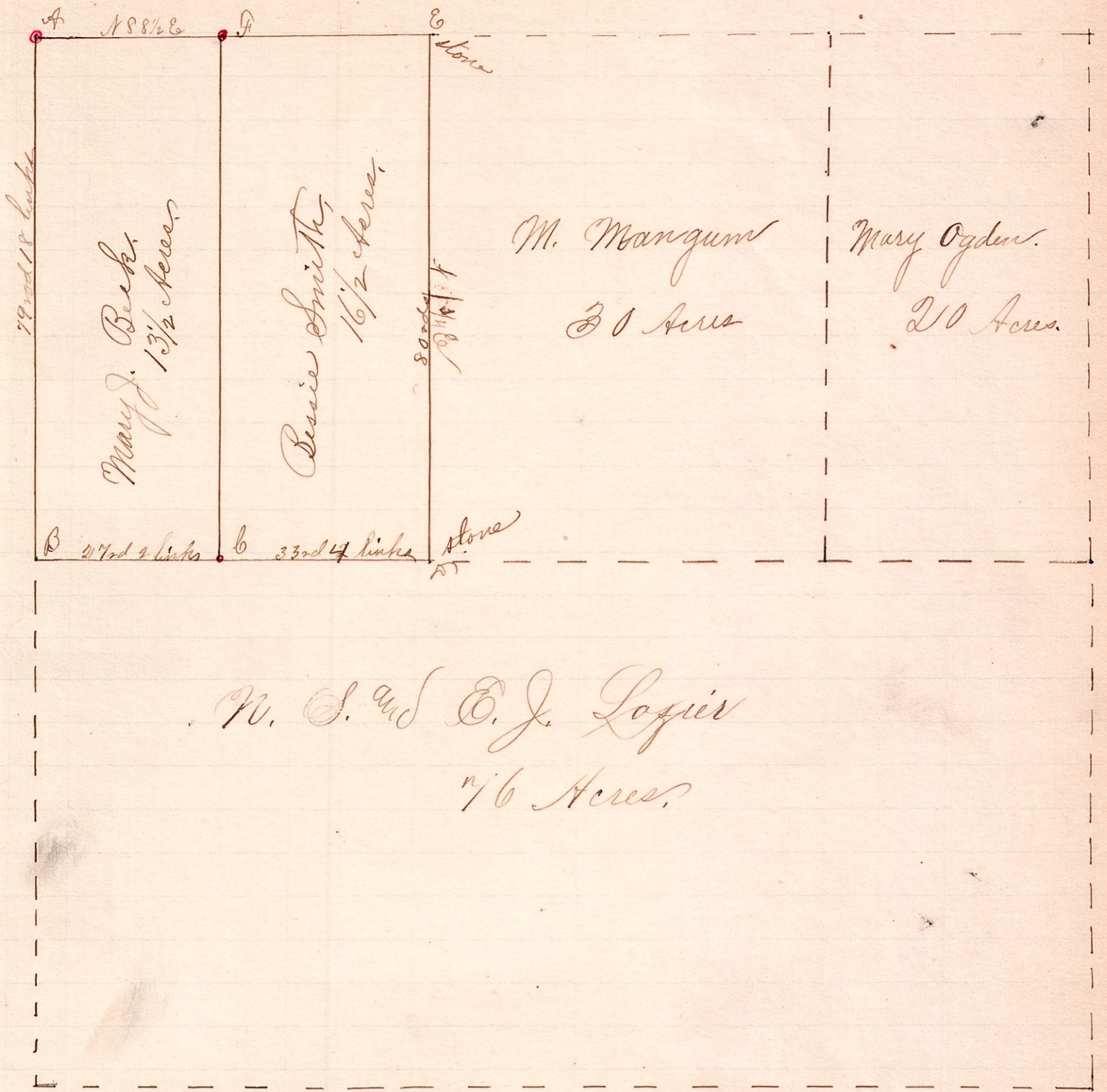


R 7th Sec 2^d Pt 24
15 20 35 M N¹/₂ N¹/₂

~ No. 326 ~



Notes.

Placed stone corners at A, F and C.
 Found stone corners at D and E.
 Surveyed and divided the above thirty acres for
 Mrs. Mary J. Beck and her sister Bessie Smith.
 April 15th 96, 1891.

Frank H. Gunt,
 County Surveyor.