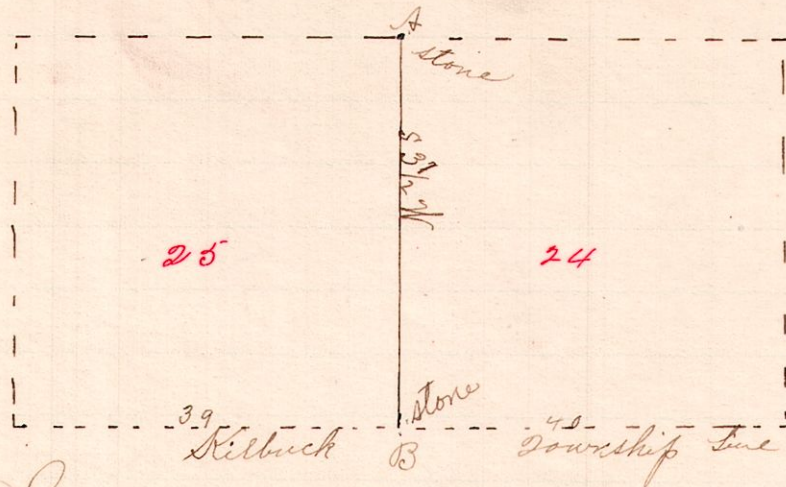


R 7p Cr Lots
 7 9 3d 24x25

No. 323.



Notes.

At A found stone covered & leaning
 At B, the Orig witnesses were
 both found, the poplar stump
 still standing, the white oak
 in good condition.
 Chairmen, J. Craft & J. Cheeland.

Surveyed the above, April 18, 1891, for E. Bowen & son, Shields
 to determine the line A.B.

Frank N. Genet
 County Surveyor.

No. 324.

8 9 4th 18 and 23
 17 and 22



Notes

At C, Orig. cor. stone & witnesses all good.
 At D found stone planted by J. Johnson.
 Running S 3 3/4 W from C found A
 buried about 2 feet. We placed
 a new stone and took witnesses.
 B was a disputed corner,
 Running from A to C which
 was an undisputed corner
 on Kilbuck 7 1/2 line, and by
 taking half the distance we
 placed witnesses at B on
 line 4 1/2 and took witnesses.

Witnesses

- Poplar 13 North 25.
- Maple 2 N 25 E 30 1/2
- Beech 32 N 70 W 27
- White Oak 19 S 53 W 4 1/2
- Beech 28 N 28 W 31
- Sugar 6 North 75

Chairmen;
 Andrew Johnson
 Joseph Way,
 Marker by Polman
 D. B. Sharp
 Leonard

Survey the above at the request of J. I. Korns
 for the purpose of determining the line A.B.
 April 24, 1891.

Frank N. Genet,
 County Surveyor.