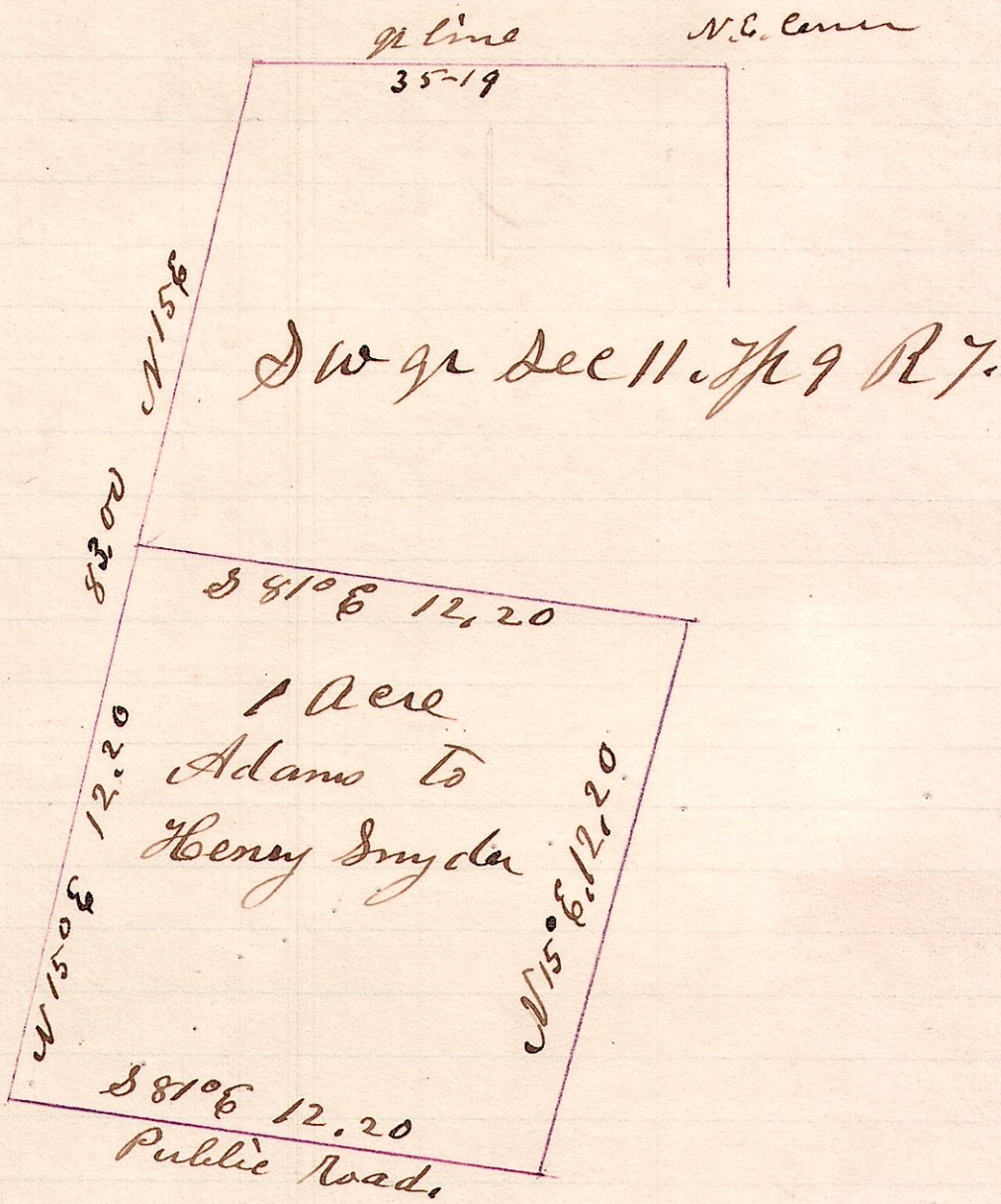


7911 SW

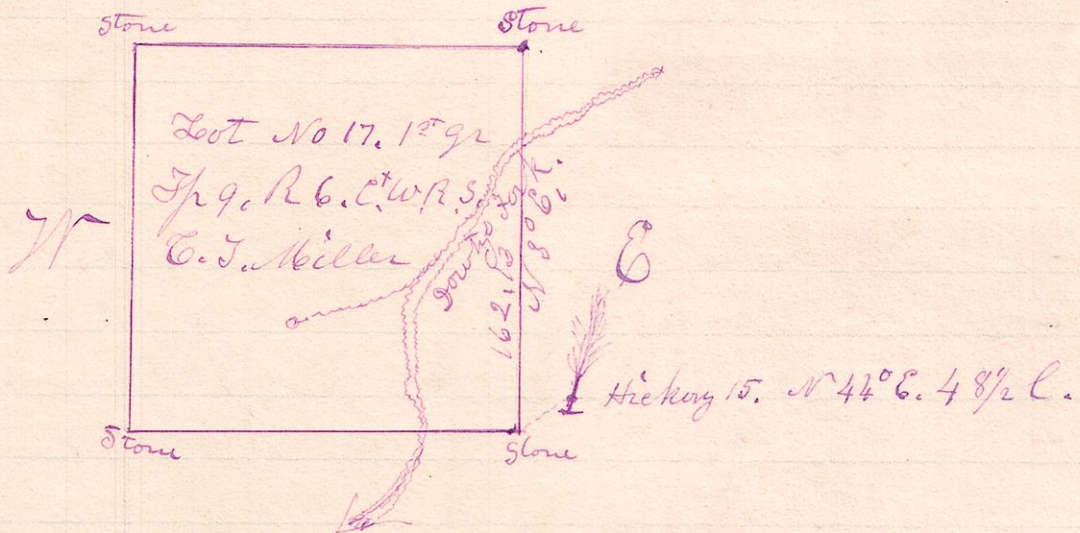
No 306



I certify the above to be a correct plat of  
 a part of the South west quarter of  
 Section 11, in Township 9, of Range 7,  
 December 15<sup>th</sup> 1890  
 H. H. Robinson  
 Co Surveyor

R 7 R 67  
 69 1/2 17

No 307



Surveyed and established corners at N.E. & S.E., by planting  
 stones with broken crockery ware under each stone, also  
 ran and staked line on east side of lot.  
 December 24<sup>th</sup> 1890.

H. H. Robinson  
 Co Surveyor