

No 290.

Lot No 1, Beckett ad.
to Millersburg
Ohio

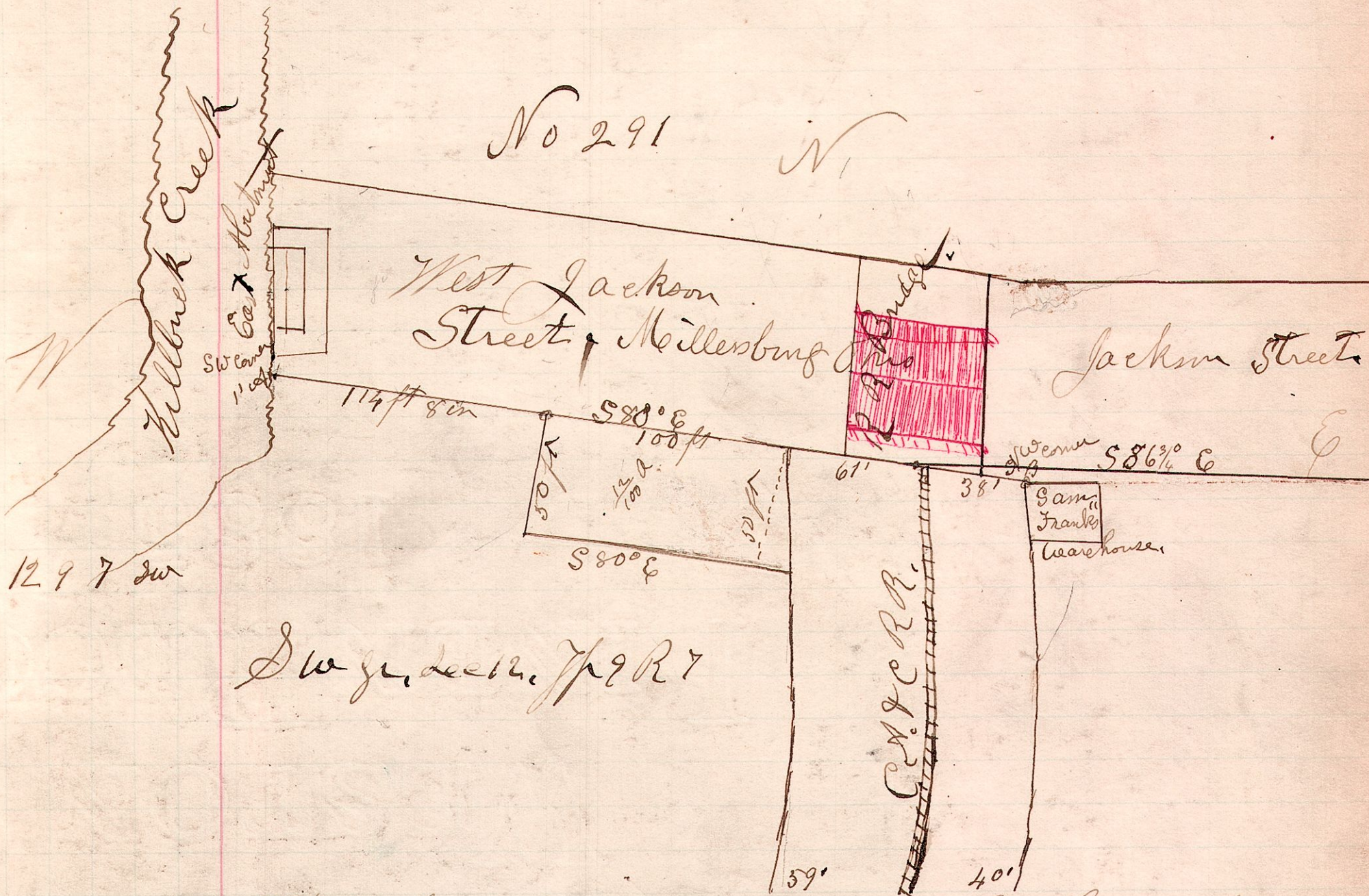
2.84

S 87° E.

A. Reed 18. S 80° E. 4 1/2 l }
Congress land corner. }

1/2 Lot 9
79

A survey made for D. A. McDowell and Sherman
Elder to establish the south line of out lot No 1.
in Beckett's addition of out lots to Millersburg
August 25th 1890.
H. H. Robinson
Co Surveyor



See plan, see 12, p 9 R 7

The Above survey was made for George Adams
Immediately south of West Jackson Street,
and west of Rail road. Established south
line of Jackson Street, commencing 8 links
south of south west corner of East abutment
of Killbuck Bridge at "A", and from there
south 80° East to the north west corner of Saml
Franks' Warehouse, for south line of Jackson
Street, west, with angle over R.R. tracks.
August 27th 1890.
H. H. Robinson
Co Surveyor