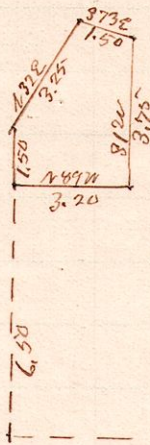


No 258

R Tp Sec 2r
13 13 11 SE



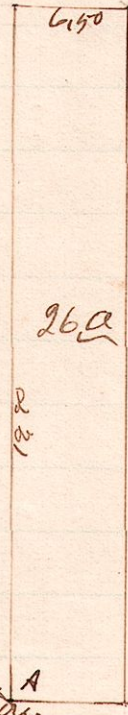
"A" is a stone at S.E. corner of S.E. 2r.
of Sec 11, Tp 13, R 13.

Survey made of School Lot for District No 6 in Stone Prairie township

W. S. Hanna
County Surveyor,

R Tp Sec 2r Pt
13 13 12 SW W

No 259



A is a stone at SW corner of SW 2r of
Sec 12 Tp 13 R 13

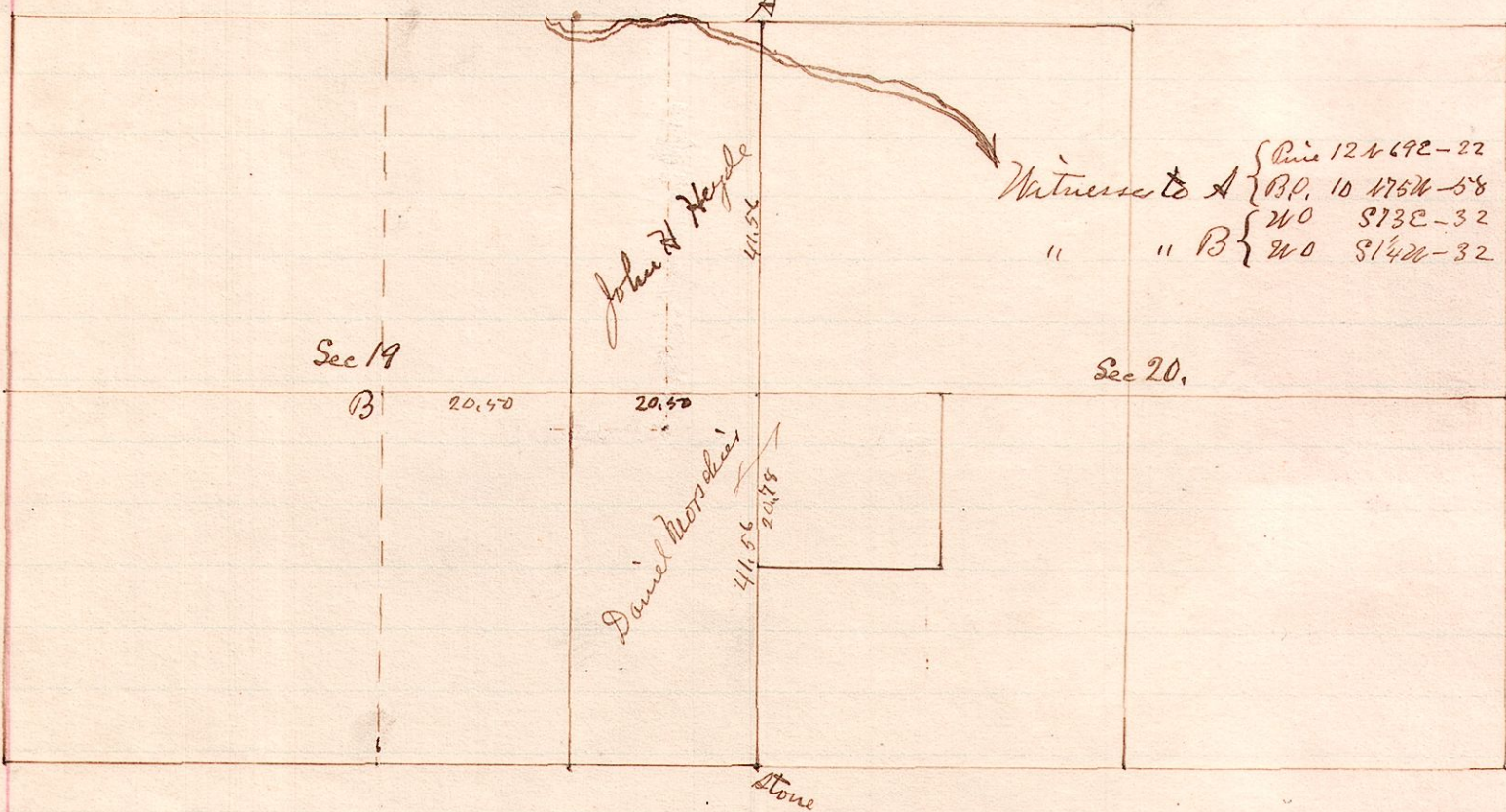
Variation 1° 15'

Surveyed for Polly Hammond March 6, 1890

W. S. Hanna,
County Surveyor

No 260

R Tp Sec
15 19 20



Surveyed the line between sections 19 & 20 for John H. Heyde and Daniel Morschier March 10, 1890

W. S. Hanna,
County Surveyor