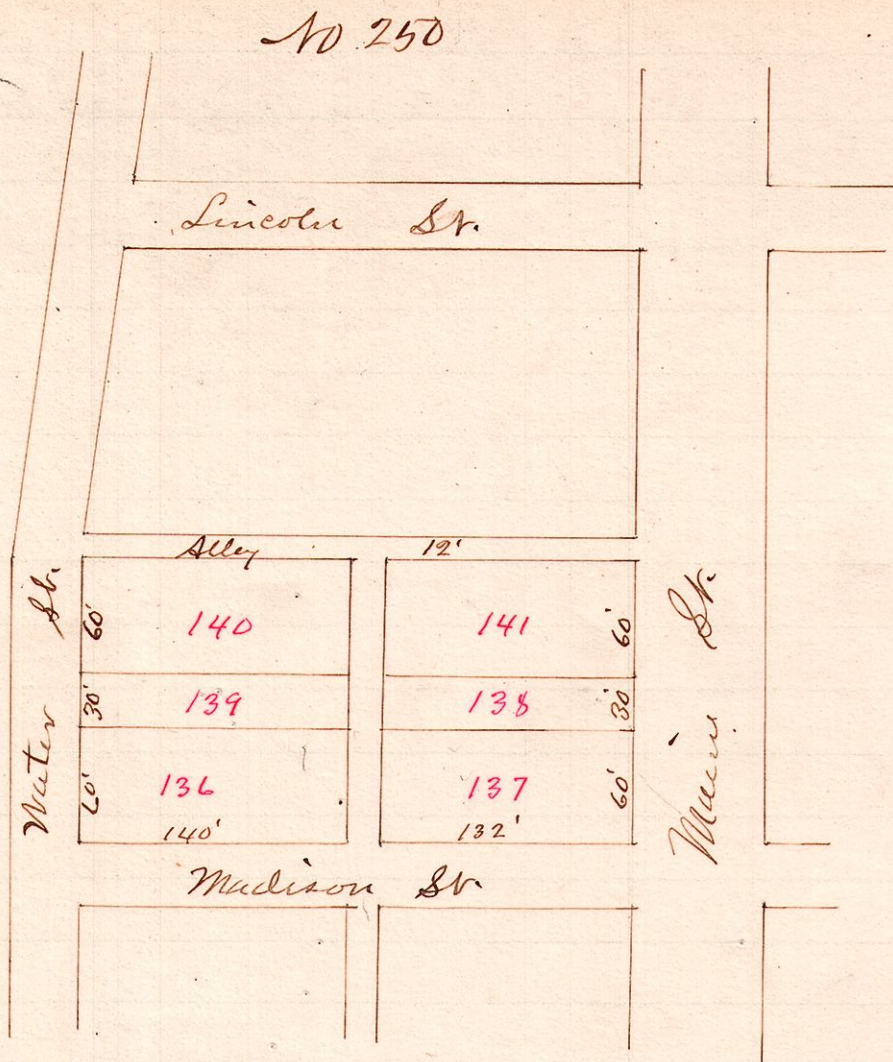
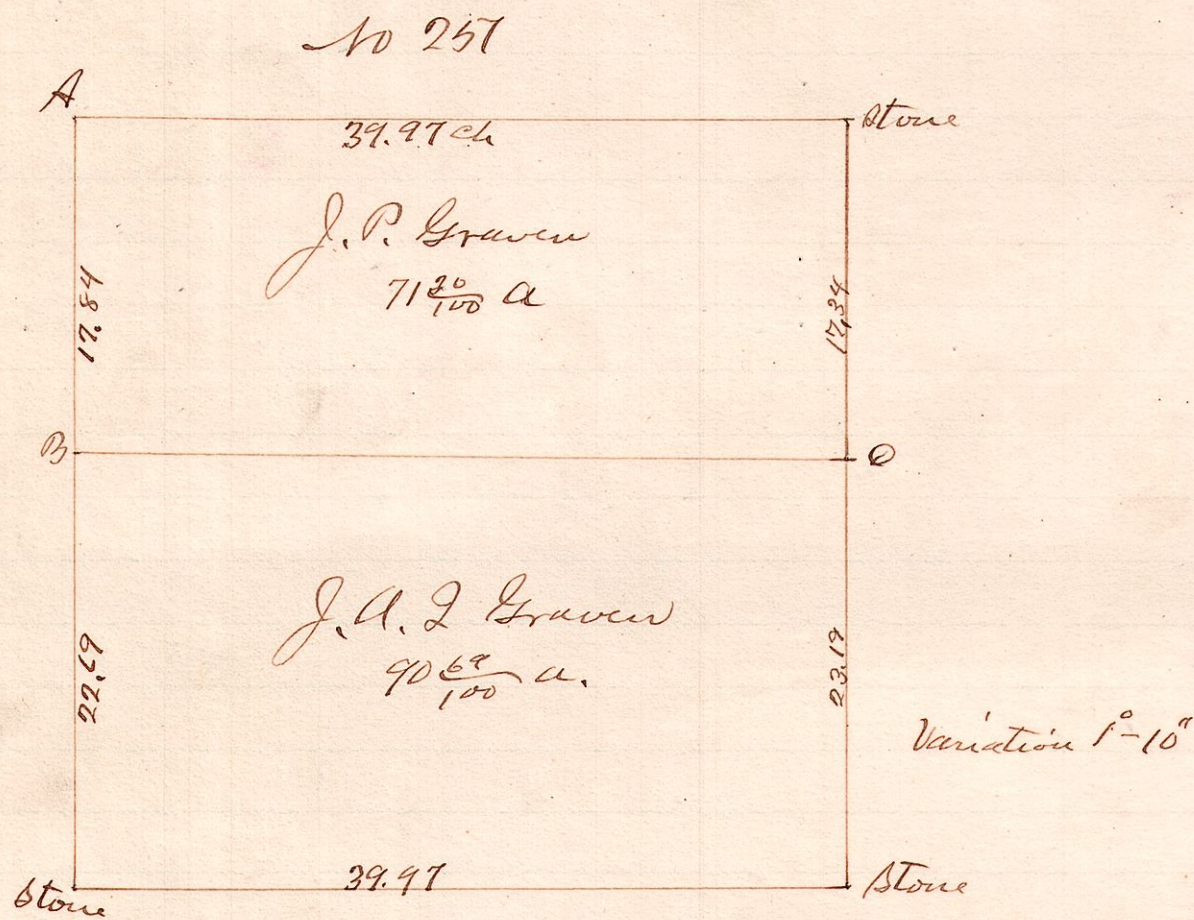


R 7<sup>th</sup> Sec  
7 8 6



Surveyed the above lots in the Village of Killbuck  
for John C. Duncan, January 31, 1890  
W. S. Hanna  
County Surveyor.

R 7<sup>th</sup> Sec 2r  
14 18 25 SW



S. W. 2r of Sec 25 T<sub>14</sub> R. 14  
BC is along the center of a public road.  
A original witness or stump of found, -M.O. 20 S3E-48.  
Surveyed for J. P. and J. A. I. Graven Feb. 12, 1890  
W. S. Hanna  
County Surveyor.