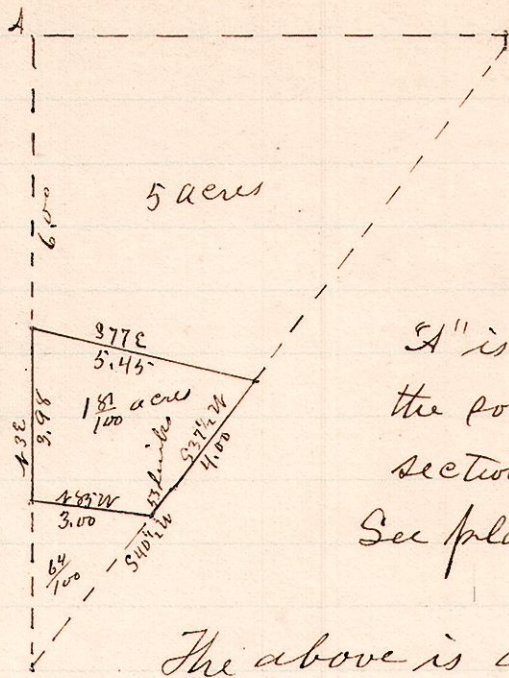


No 247.

R 7p Sec 2r
5 9 7 NW

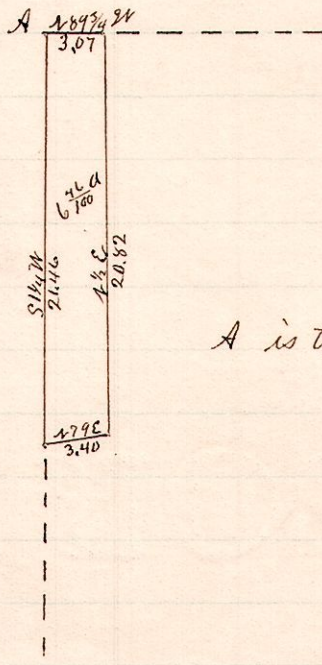


A is a stone at the north west corner of the south half of the north west quarter of section 7 Tp 9 R 5
See plat No 246 this record.

The above is a correct plat and description of premises owned by G. W. Luke December 1889
W. S. Hamma
County Surveyor

No 248

R 7p Sec 2r Pr
14 17 7 NW NW



A is the N.W. corner, ^{See} 7 Tp 17 R 14

Surveyed the above for W. S. Froyer, Dec 31, 1889.
W. S. Hamma
County Surveyor