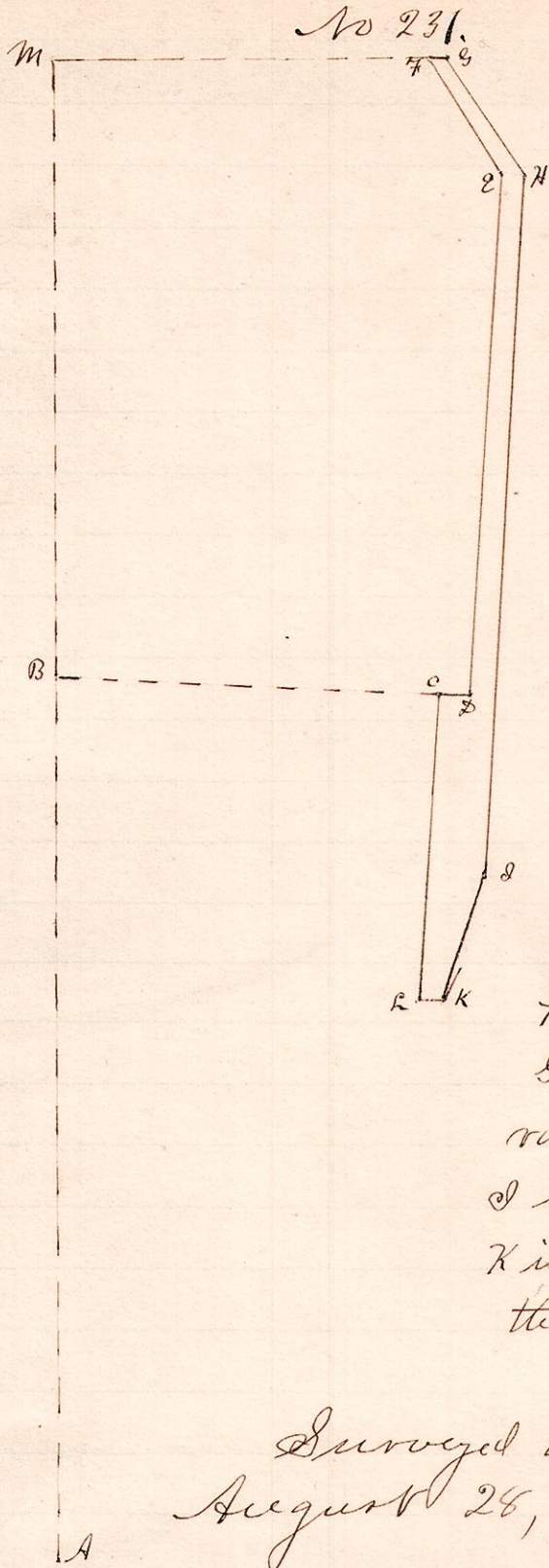


R Tp Sec 2r
7 9 12 S.W.



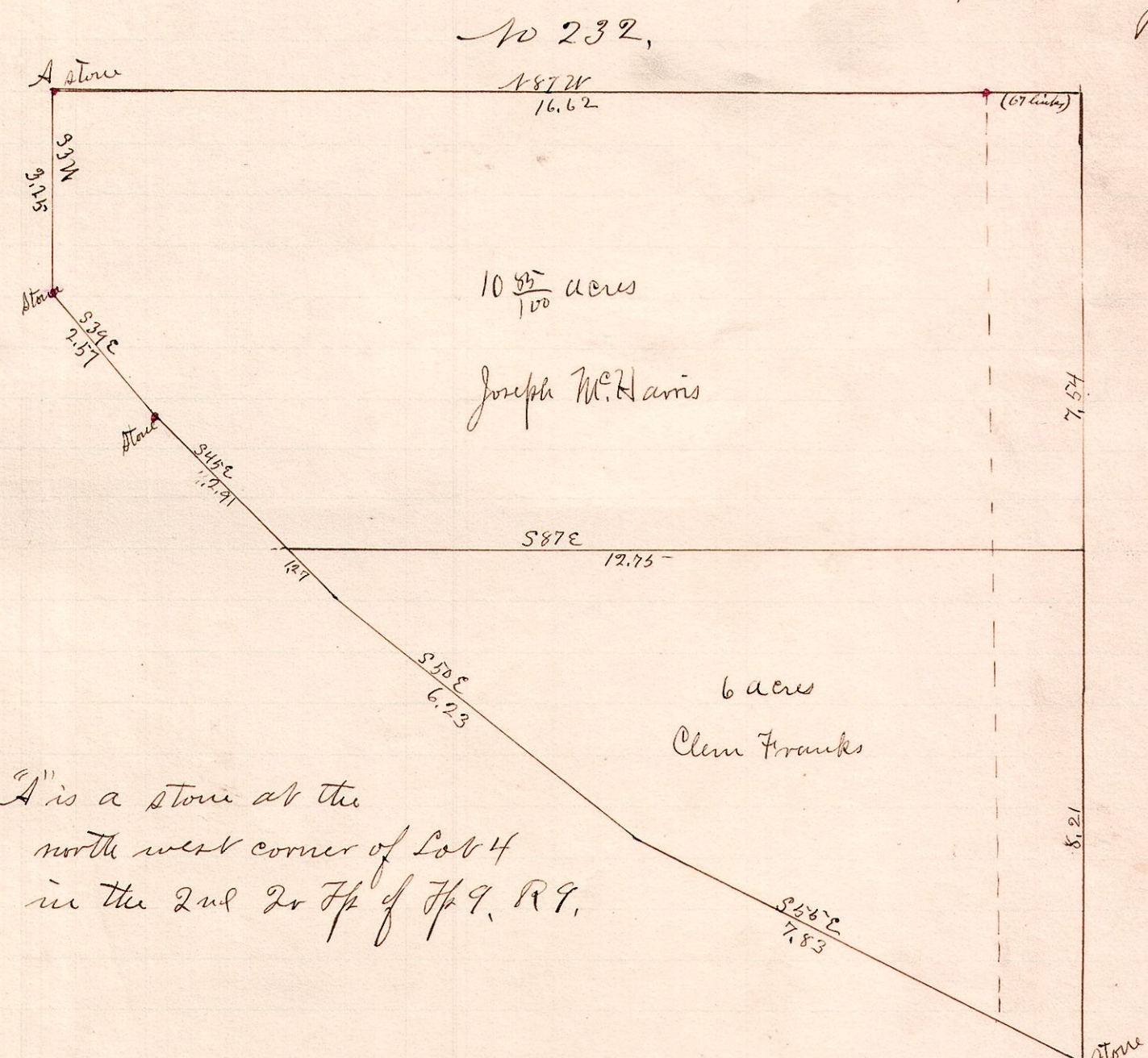
- Description
- A" is the S.W. corner of Sec 12 Tp 9 R 7
 - A. N 3 E 23.47 ch.
 - B. S 87 E 10.05 "
 - C. S 87 E .90
 - D. N 3 E 14.05 "
 - E. N 32 1/2 W 3.68 "
 - F. S 87 E .50 "
 - G. S 32 1/2 E 3.65 "
 - H. S 3 W 18.90 "
 - I. S 18 W 3.53 "
 - J. N 87 W .75 "
 - L. N 6 1/2 E 9.25 "

M is the N.W. Corner of Sec 12.
 F, G is along the north line of said section
 G, H, I, K is along the west side of the mill race at low water mark
 J is near a stone pier at the outlet of the reservoir
 K is the center of the iron bridge across the tail race.

Surveyed the above for Mrs Fehrenbach
 August 28, 1889.

W.S. Hanna, Co. Surveyor.

R Tp 2r 4r R4
9 9 2nd 4 NW



No 232,

10 85/100 acres
 Joseph M. Harris

6 acres
 Clem Franks

"A" is a stone at the north west corner of Lot 4 in the 2nd 2r Tp of Tp 9, R 9.

Surveyed the above for Joseph M. Harris and Clementine Franks
 Aug. 29, 1889

W.S. Hanna
 County Surveyor.