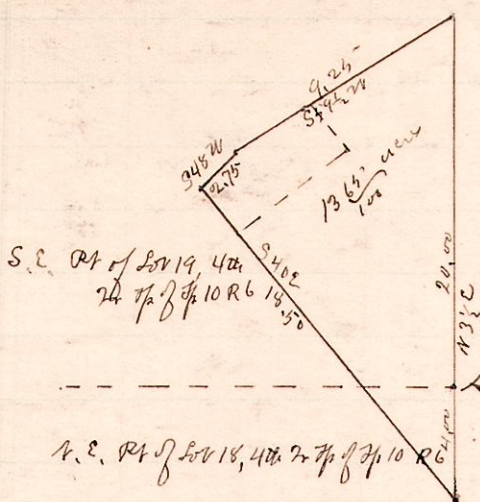


No 228

R Tp 2r Tp Lot R1
6 10 4th 19 3E

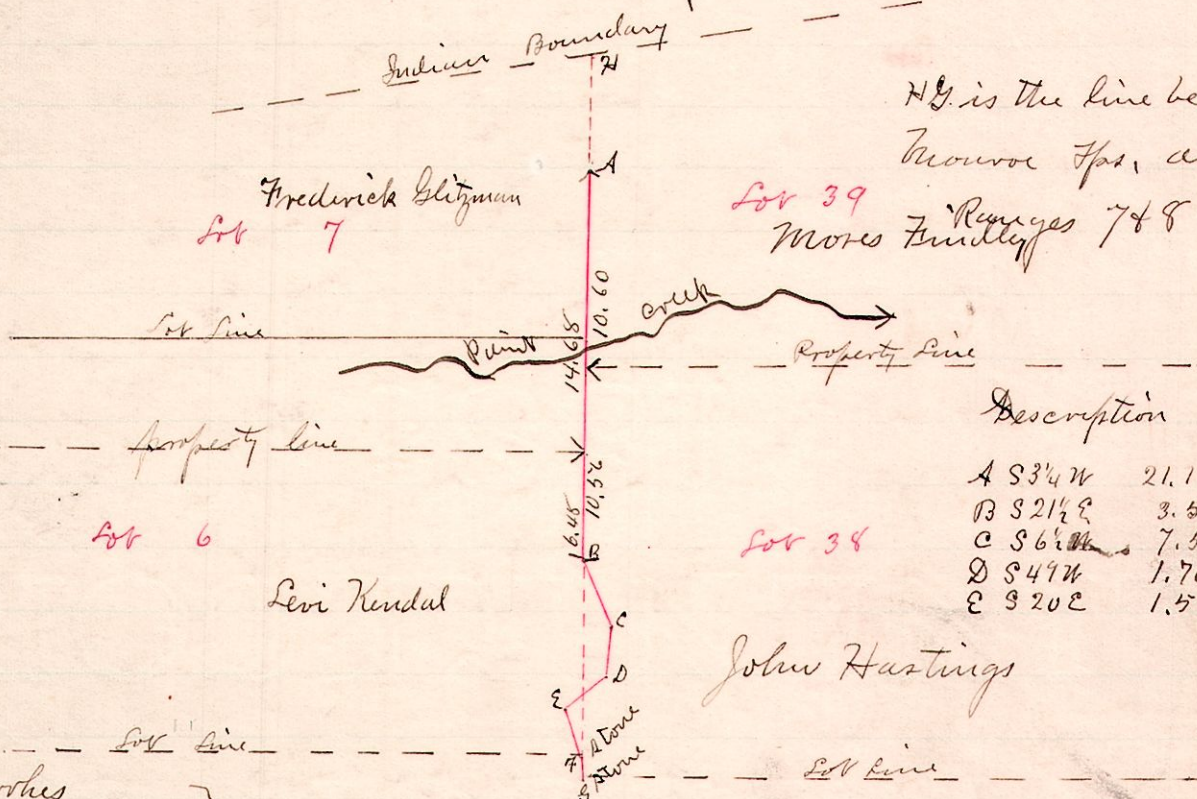


"A" is a stone at the S.E. corner of Lot 19 in 4th 2r Tp of Tp 10, R 6.

Surveyed the above for Christian Keller July 23, 1889
W.S. Hanna County Surveyor

No 229

R Tp 2r Tp Lot
7 9 1. 35+39
8 6+7
TR 322



H.G. is the line between Hardy and Monroe Tps, also line between Lots 39 Moore Family & 7+8

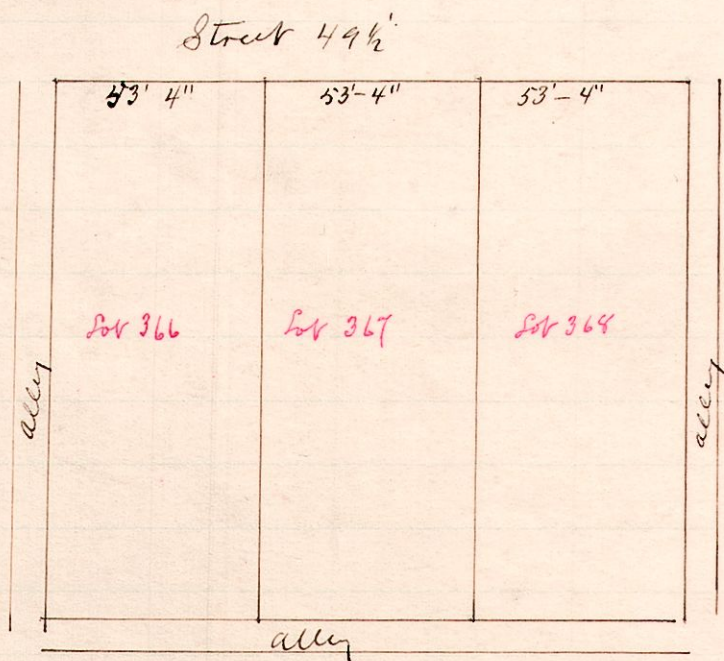
Description

A	S 3 1/4 W	21.16	to B
B	S 2 1/2 E	3.50	to C
C	S 6 1/2 W	7.56	to D
D	S 4 1/4 W	1.70 + .98	to E
E	S 2 0 E	1.53	to F

S. L. Voorhes
Armstrong Wolgamott Viewers, John Johnston
John Carpenter } Viewers, John Hallam } Viewers, Eugene Knowles, Markes
A survey made by joint order of the Trustees of Hardy and Monroe townships of a Township Road petitioned for by S. H. Sterling et al. Aug 13, 1889
W.S. Hanna Surveyor.

No 230

R Tp Sec Lot
7 9 12 366
367
368



Surveyed the above Lots for Frederick W. Fritz et al Aug 13, 1889
W.S. Hanna County Surveyor.