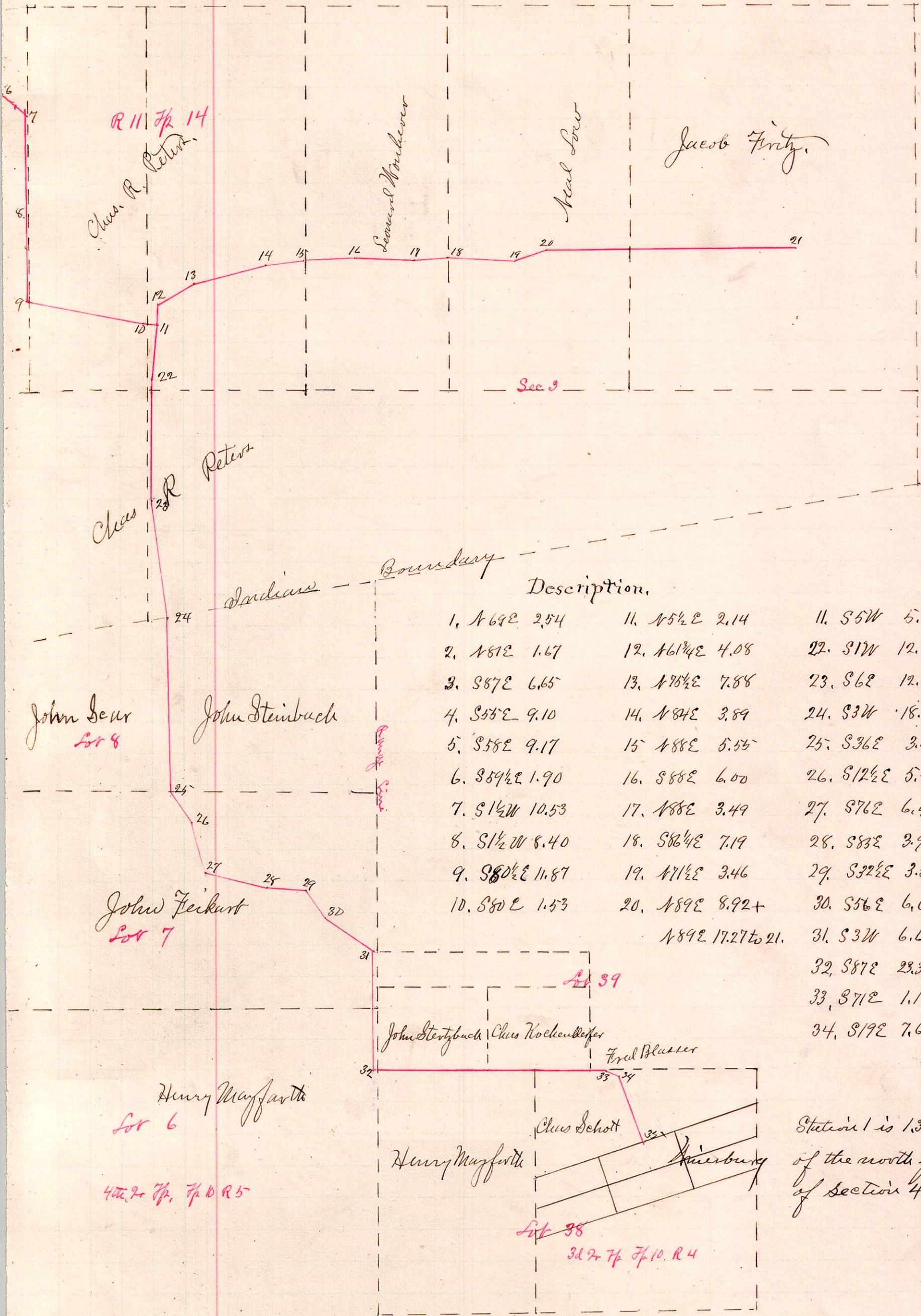


TR 224 & 222

No. 222.



Description.

1. N 69° E 2.54	11. N 5 1/2° E 2.14	11. S 5° W 5.58
2. N 81° E 1.67	12. N 61 3/4° E 4.08	22. S 1° W 12.20
3. S 87° E 6.65	13. N 75 1/2° E 7.88	23. S 6° E 12.45
4. S 55° E 9.10	14. N 84° E 3.89	24. S 3° W 18.17
5. S 58° E 9.17	15. N 88° E 5.55	25. S 36° E 3.45
6. S 59 1/2° E 1.90	16. S 88° E 6.00	26. S 12 1/2° E 5.44
7. S 1 1/2° W 10.53	17. N 88° E 3.49	27. S 76° E 6.48
8. S 1 1/2° W 8.40	18. S 86 1/4° E 7.19	28. S 83° E 3.96
9. S 80 1/2° E 11.87	19. N 71 1/2° E 3.46	29. S 32 1/2° E 3.58
10. S 80° E 1.53	20. N 89° E 8.92 +	30. S 56° E 6.66
	N 89° E 17.27 to 21.	31. S 3° W 6.66 + 6.17
		32. S 87° E 23.35
		33. S 71° E 1.17
		34. S 19° E 7.65

Station 1 is 1.30 Ch. south of the north quarter corner of Section 4 Tp 14 Range 11

County Road petitioned for by John D. Steinbach et al.
 Surveyed by order of the Commissioners at their June session 1884
 W. S. Hanna
 County Surveyor.