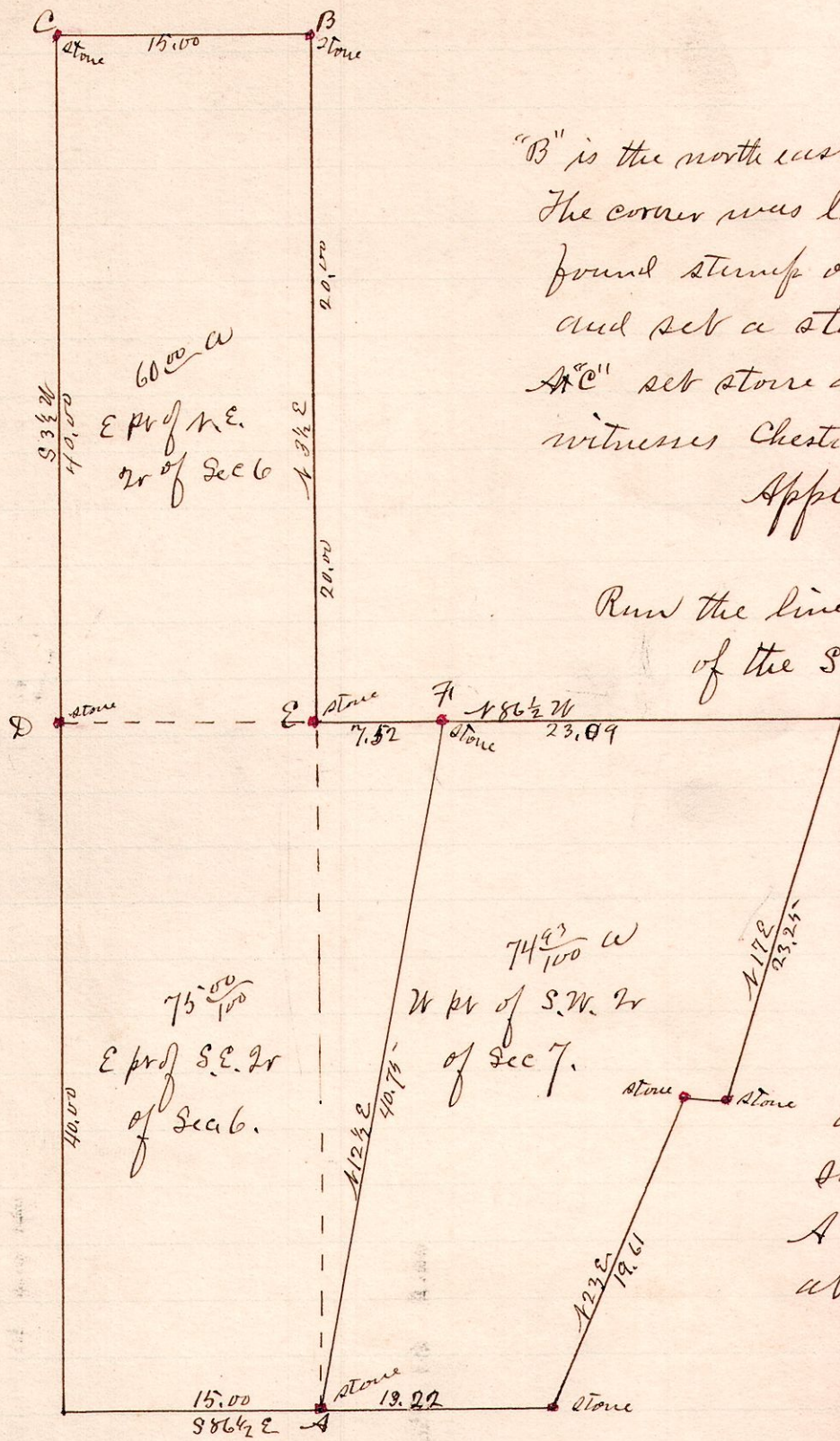


No. 213.

R 4th Sec 6th Tr 2nd Pt
 4 8 7 8 2nd W



"B" is the north east corner of Sec 6, T. 8 R. 4.
 The corner was lost at this point but we
 found stump of old witness No. 117E 89
 and set a stone therefrom.
 A²C set stone and took the following
 witnesses Chestnut 8 N 56 1/2 W 17
 Apple 6 S 62 1/2 E 87 1/3

Run the line A F cutting off 15 acres
 of the S.W. 2r of Sec 7.

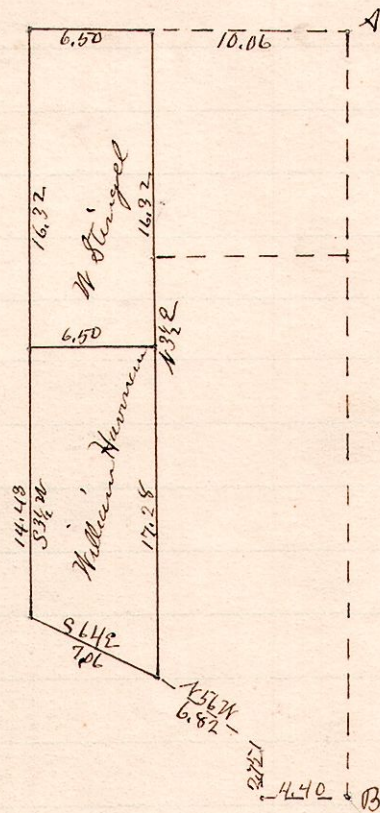
Run the east line of Sec
 6 and found both witnesses
 standing at E and set
 a stone therefrom.

Also established a corner
 at A, the same being the
 south east corner of Sec 6
 A hickory marks the corner
 at this point

Surveyed the above for Isaac Trojes et al June 5, 1889
 W. S. Harnum Co Surveyor

No. 214.

R 4th Sec 6th Tr 2nd
 4 8 6 N.W.



"A" is the N.E. Corner of N.W. Tr. of Sec 6
 "B" is the center of Sec 6.

Surveyed the above for W Stingel and William Harnum
 June 6, 1889,
 W. S. Harnum
 County Surveyor.