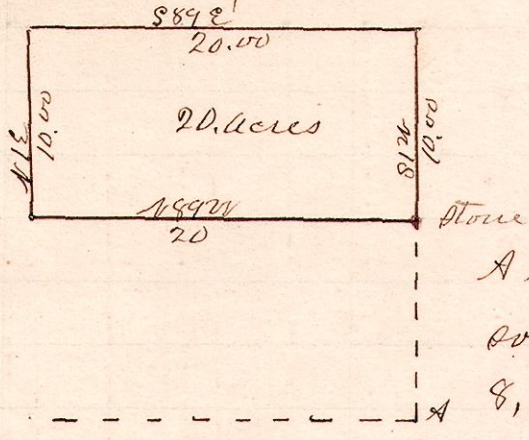


R 7/2 Sec 2r,
12 14 8 1/20.

No 194,

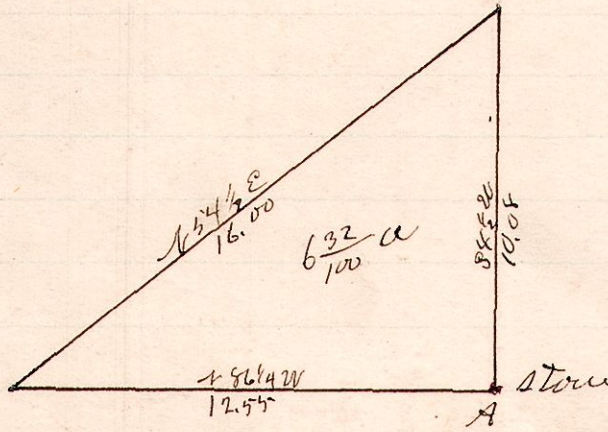


A is the south east corner of the south west quarter of section 8, Tpr. 14, R. 12.

Surveyed the above for James Snyder and John Snyder
April 18, 1889
W. S. Hanna
County Surveyor,

No. 195:

R 7/2 2r Lot 20
6 10 4th 20 SE

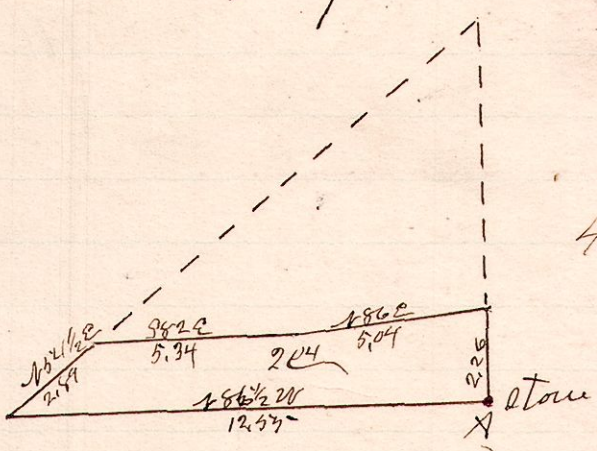


A is a stone at the S.E. corner of Lot 20 in 4th 2r 7/2 Tpr. 10 R 6

The above is a correct plot of land belonging to Nixon heirs.
April 18, 1889
W. S. Hanna, Co. Surveyor,

No. 196.

R 7/2 2r Lot 20
6 10 4th 20 SE

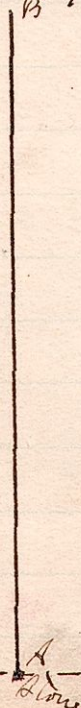


Being part of Lot 20 in 4th 2r 7/2 Tpr. 10 R 6

Surveyed the above for Alfred Snyder and Samuel Richards
April 18, 1889
W. S. Hanna
County Surveyor

R 7/2 Sec 7
13 13 7 1/2 line

No 197



"A" is the south quarter corner of Sec 7, Tpr 13, R 13
"B" is the center of Sec 7.
Distance to "A" W. O. 20 N 87 1/2 E 42 links

Surveyed the above for William Fodd et al
April 23, 1889
W. S. Hanna Co Surveyor