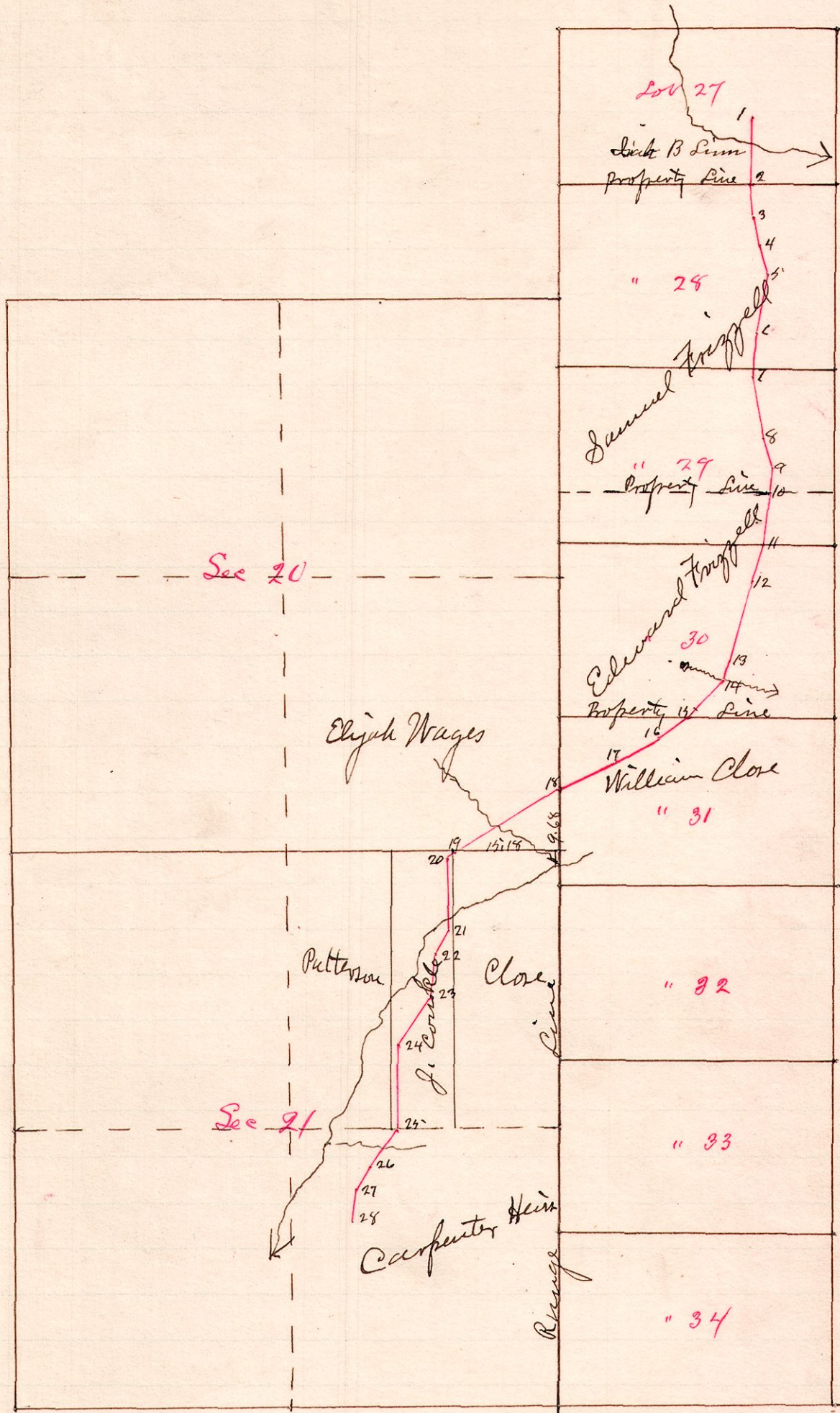


No 191

R Jp
7/6 8 2027
Sec 20 & 21



Station	Bearings	Distance
1	S 32 W	10.10
2	S 4 E	4.43
3	S 12 1/2 E	4.57
4	S 17 E	4.16
5	S 11 W	8.06
6	S 5 3/4 W	5.87
7	S 9 E	9.50
8	S 15 1/2 E	4.40
9	S 3 1/2 W	3.61
10	S 7 W	7.84
11	S 14 W	5.14
12	S 17 W	12.40
13	S 18 W	2.36
14	S 44 W	7.50
15	S 56 W	4.18
16	S 62 W	6.12
17	S 66 W	8.87
18	S 57 1/2 W	18.00
19	S 44 1/2 W	1.00
20	S 3 1/2 W	10.45
21	S 30 1/4 W	3.77
22	S 5 W	6.00
23	S 35 3/4 W	8.71
24	S 3 1/2 W	12.50
25	S 33 1/2 W	6.12
26	S 25 W	3.75
27	S 6 W	4.74

Witnesses to Station 1 White Oak N 64 1/2 E 54 ft.
 " " " 28 White Oak N 46 1/2 E 43 ft.

The above is a correct plat of the survey of a
 County Road petitioned for by Sank B. Linn see others
 and ordered to be viewed and surveyed by the County
 Commissioners at their March session 1887
 W.S. Hanna
 County Surveyor.