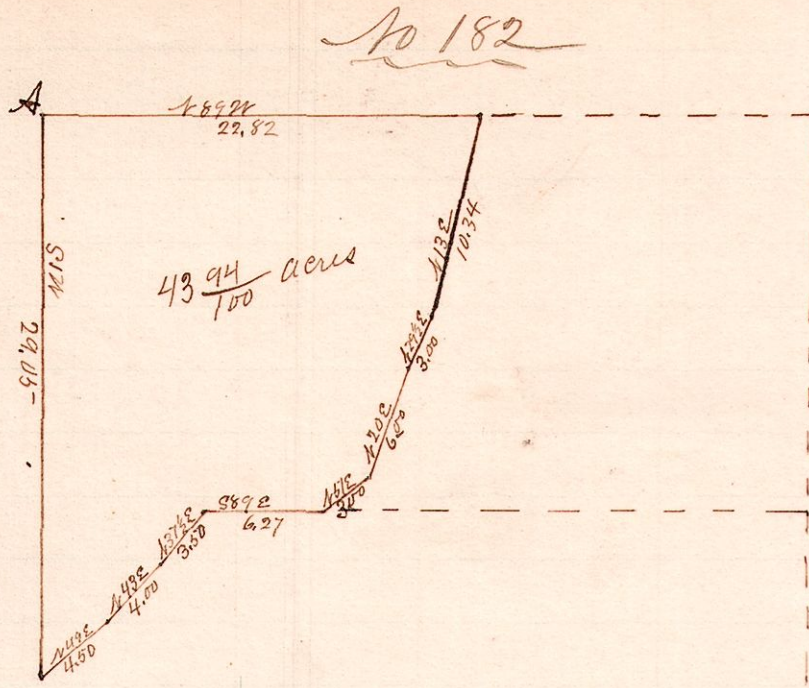


R 7p Sec 2r R4
13 14 36 1N 1W



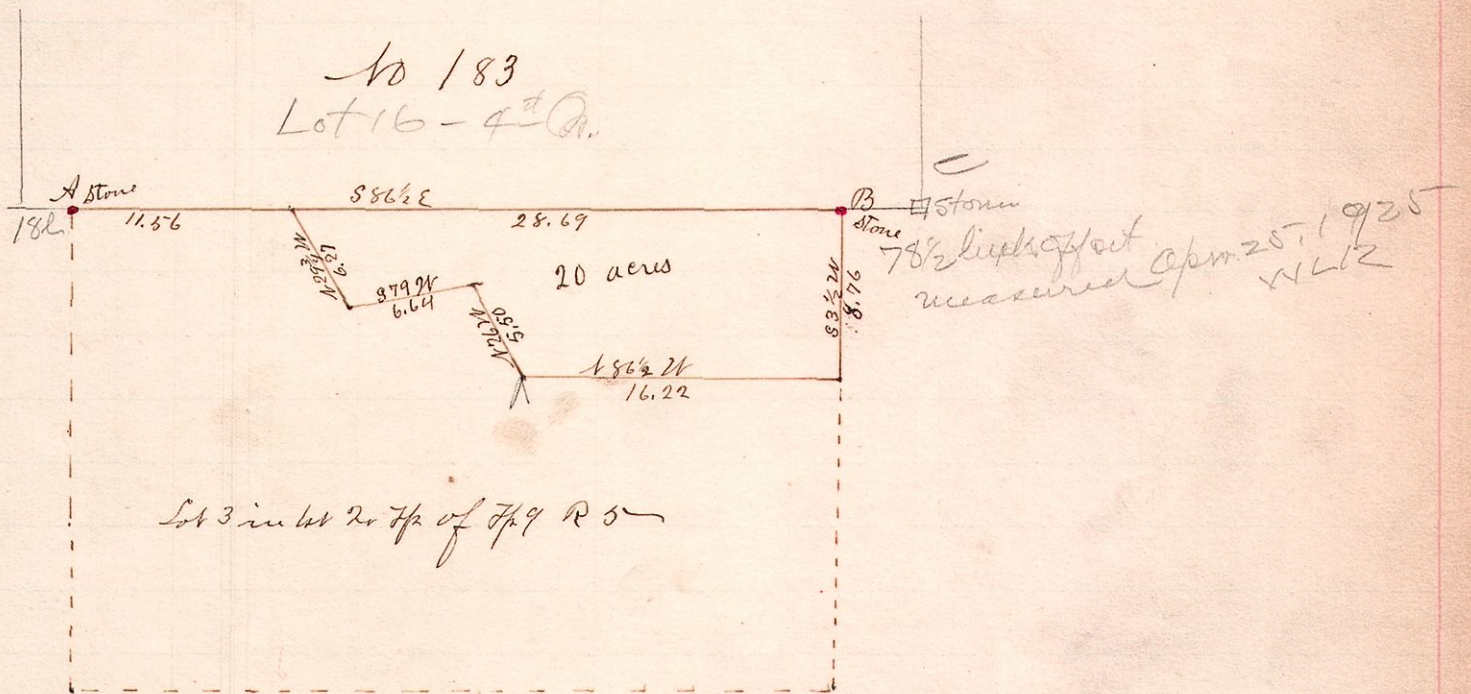
"A" is the N.W. Corner of Sec 36,
Tp 14 R 13.

	Latitude		Departure		Cor. Latitude	Cor. Dep.	Dist.	North Areas	South Areas
	N	S	E	W					
S 3/4 W	29.05	29.00		.38	-29.05	-.37	.37		10 748
N 49 E	4.50	2.94	3.39		+2.94	+3.42	3.42	10 054	
N 43 E	4.00	2.93	2.73		+2.93	+2.76	9.60	28 078	
N 37 1/2 E	3.50	2.77	2.13		+2.77	+2.16	14.56	40 331	
S 89 E	6.27	.10	6.27		-.10	+6.31	23.03		2 303
N 51 E	3.00	1.89	2.33		+1.89	+2.36	31.70	59 913	
N 20 E	6.00	5.64	2.05		+5.64	+2.08	36.14	203 829	
N 29 1/2 E	3.00	2.61	1.48		+2.61	+1.51	39.73	103 695	
N 13 E	10.34	10.07	2.32		+10.07	+2.35	43.59	438 951	
N 89 1/4 W	22.82	.30		22.81	+.30	-22.58	23.36	7 008	
		29.15	29.10	22.70	23.19			891 859	13 057
	Err .05		Err	.49				13 057	

$\frac{878,808}{(2 \times 10)} = 43,941 \text{ acres}$

Surveyed the above for Thomas Everly & Fred Ruess March 13, 1889
W. S. Hanna
County Surveyor

R 7p 2nd Lot R4
5 9 lot 3 1E



Lot 3 in lot 2 of Tp 9 R 5

"A" is a stone at the N.W. corner of said Lot.
"B" is a stone at the N.E. " " " "

Surveyed the above for John Weaver, March 14, 1889
W. S. Hanna
County Surveyor