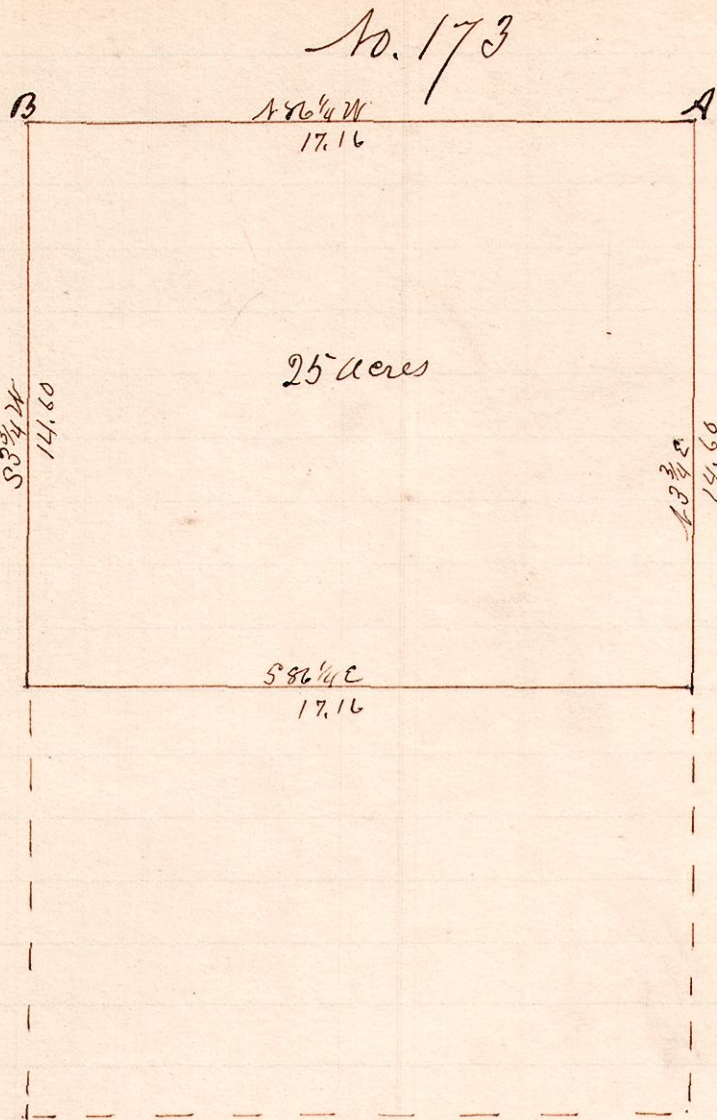


R Tp 2nd Sec 10
9 9 4th 10 1

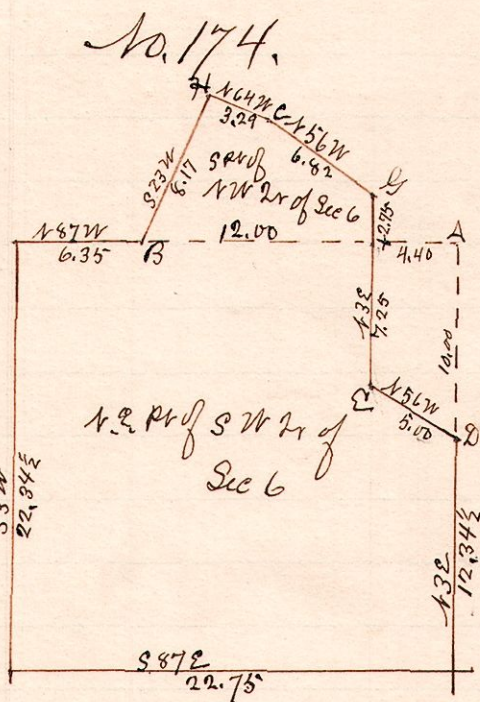


"A" is the N.E. Corner of Lot 10 in the
4th 2nd Tp. of Tp 9 Range 9
"B" is the N.W. corner of said Lot 10

A survey made for R. H. Snow administrator of the estate of A. Mackay
deceased of the N. pt. of Lot 10 in 4th 2nd Tp. of Tp 9 R 9 and sold to
William Mackay Feb. 14, 1889

W. S. Hanna,
County Surveyor

R Tp Sec 2nd
4 8 6 SW
NW



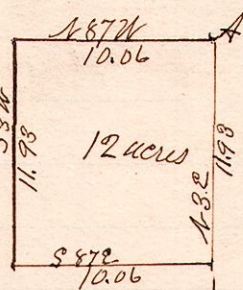
"A" is the center of Sec 6 Tp 8 R 4
"F" is a stone at the south
quarter corner of Sec 6

Stones at B, C, D & E
The lines G to H is along a
public road.

Surveyed the above for Christian J. Schlabaek and
others Feb 15, 1889

W. S. Hanna
County Surveyor

R Tp Sec 2nd
4 8 6 NW



A is the N.E. corner of
the N.W. 2nd of Sec 6 Tp 8 R 4

Surveyed the above for Christian J. Schlabaek and others
Feb. 15, 1889

W. S. Hanna
County Surveyor