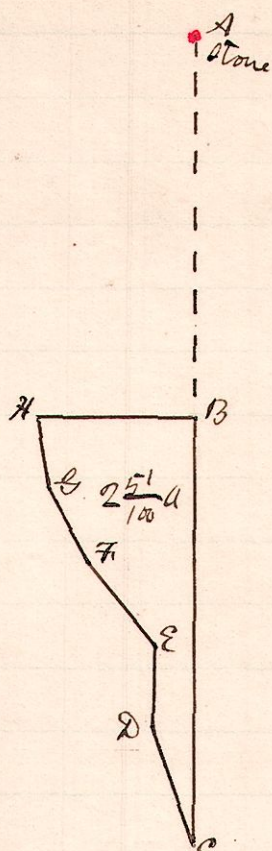


R 7th Sec 2nd P
13 14 33 SE E

No 168

11.37
25.44



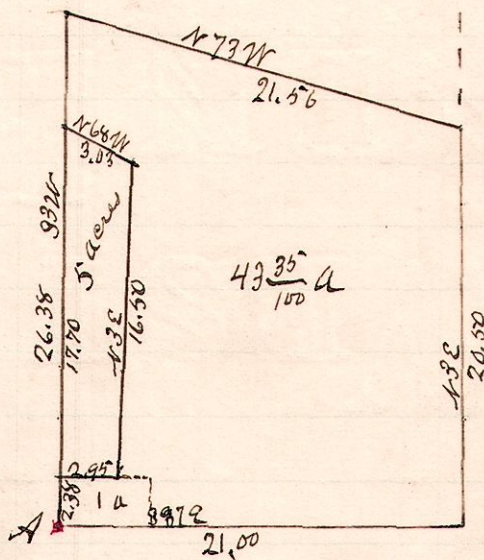
A is a stone at the N.E. corner of the SE 2nd of Sec 33 T² R 14, R. 13

- B to C is S 1/4 W - 11.37
- C to D is N 19 1/2 W - 3.35
- D to E is N 1 1/2 W - 2.00
- E to F is N 37 W - 2.72
- F to G is N 24 W - 2.21
- G to H is N 33 1/2 W 2.10
- H to B is S 88 3/4 E 4.13

Surveyed the above for John Crockett & R. F. Wilson on the 21st day of January 1889
W. S. Hanna
County Surveyor

R 7th Sec 2nd Lot P
6 16 3rd 11 SW

No 169.

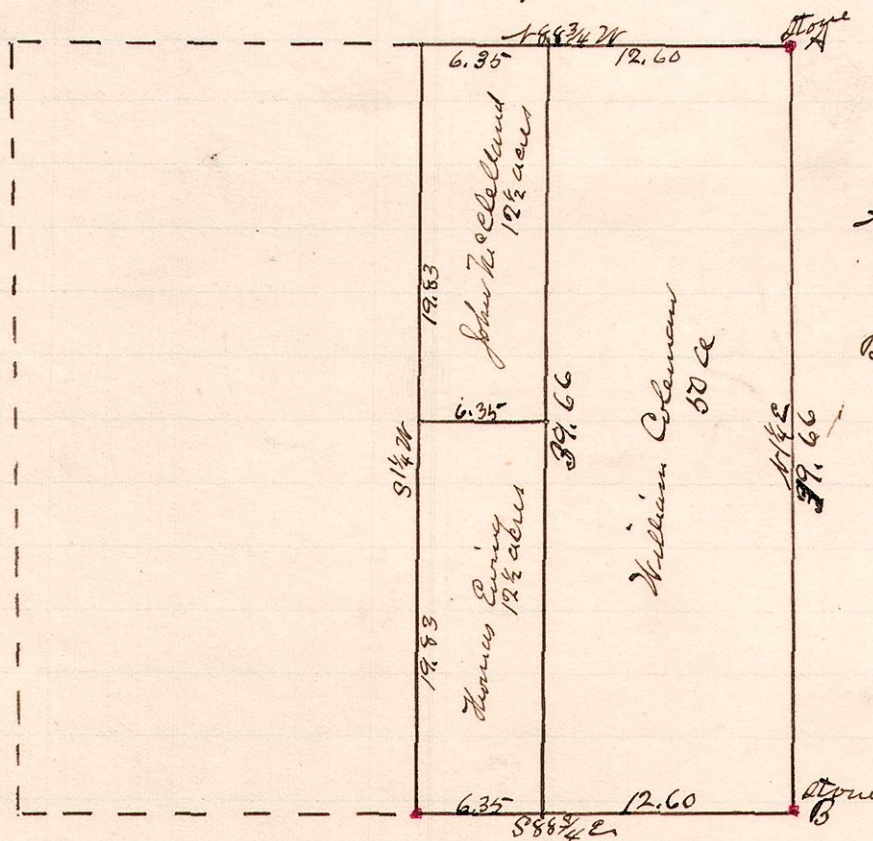


A is the south west corner of Lot 11 in the 3rd T² of T² R 6

Surveyed the 5 acre tract in the above plat for W. H. Gutterberger and Amos Walters January 16, 1889.
W. S. Hanna
County Surveyor

No 170

R 7th Sec 2nd
13 14 35 N.W.



A is the N.E. corner of the N.W. 2nd of Sec 35 T² R 14, R 13 and B is the S.E. corner of said 2nd

Surveyed the above January 21, 1889
W. S. Hanna
County Surveyor