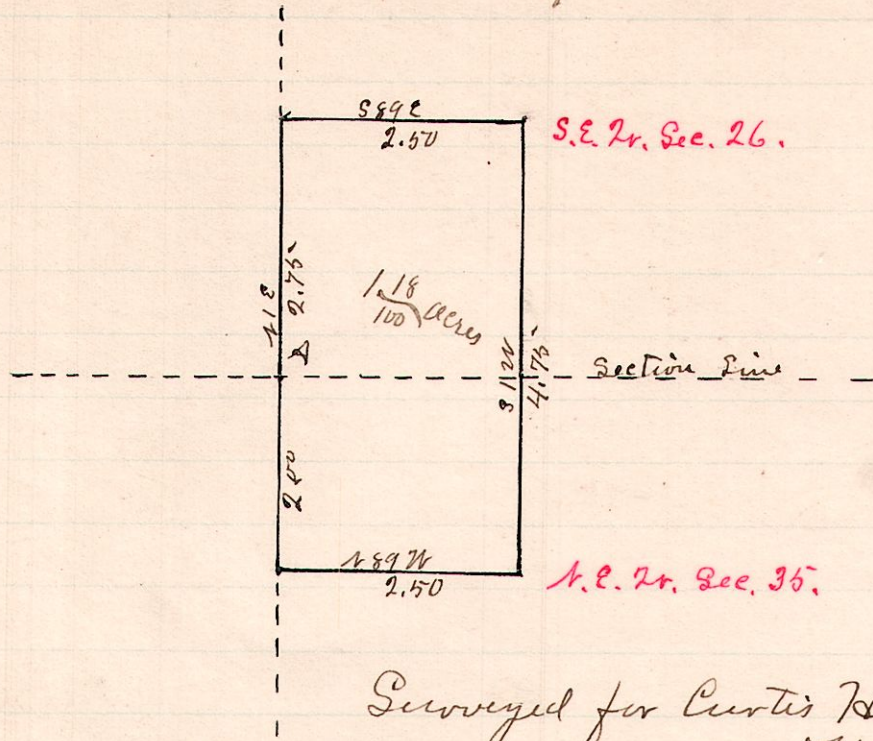


No. 149

R 7/2 Sec 26 Pt.  
26 SE SW  
15 20 35 40 NW



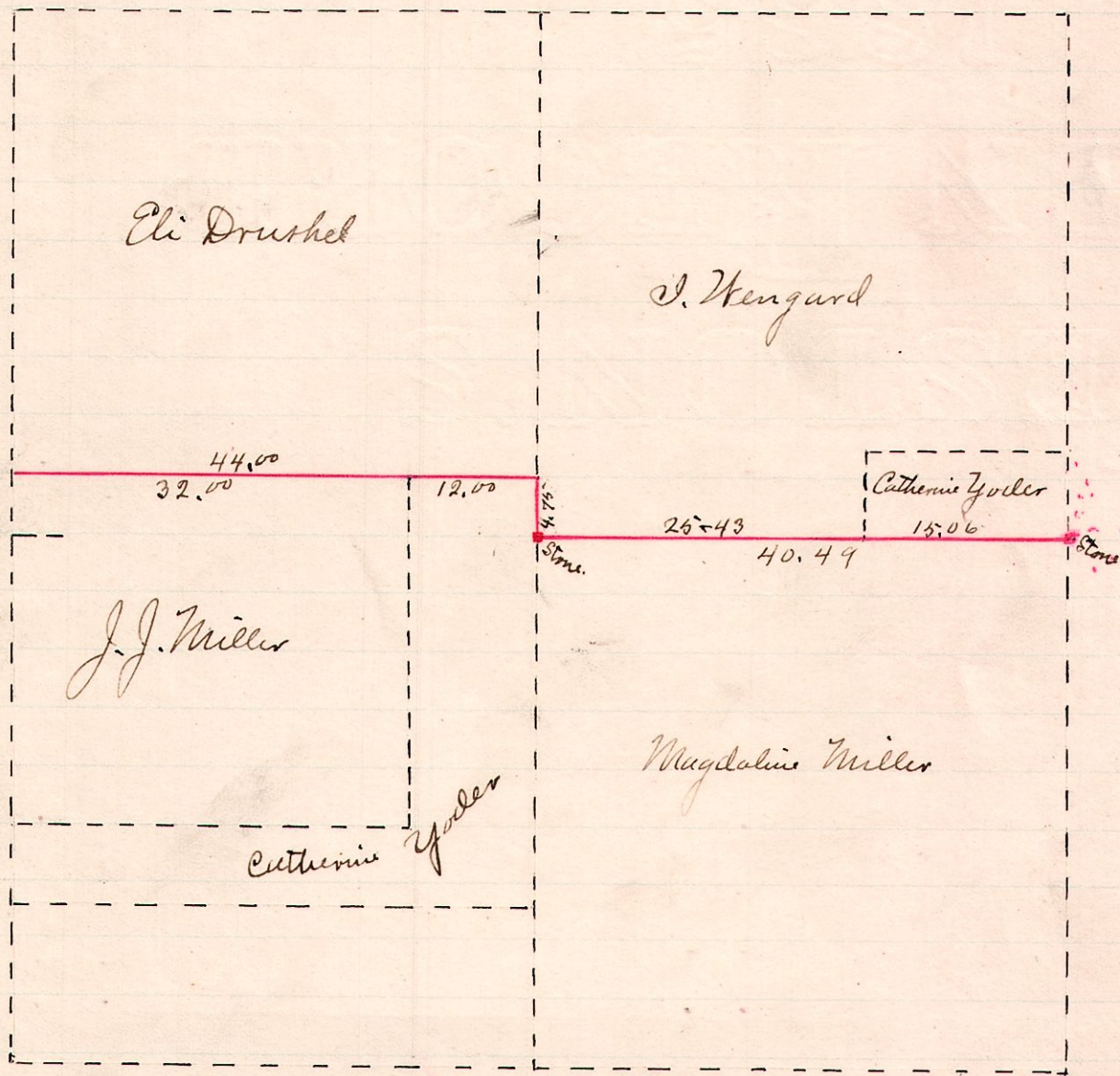
This is a stone set by Deem Shreve for the south quarter corner of Sec. 26.

It seems to me that this stone is about 25 links too far north and a little east of its true location.

Surveyed for Curtis Heins September 4, 1888  
W. S. Hanna  
County Surveyor.

No. 150

R 7/2 Sec  
5 9 5



Township Road, petitioned for by Eli Drushel et al.

Description: Beginning at a stone at the S.E. Cor. of the N.E. 1/4 of Sec 5; Township 9, Range 5; thence north 87 degrees west 40.49 ch to a stone at the center of the section; thence north 3 degrees east 4.75 ch.; thence north 89 degrees west 44.00 chains to the range line and thence to terminate in a north and south road.

The above plat indicates the distance each land owner joins on the line of the road.

John Hitchcock } Chainmen: J. W. Johns & J. G. Resdenbach  
Wm Deetz } Viewers Marker: Joseph Wengard.  
Wm Lawhead }

Surveyed by order of the Trustees of Berlin Township, Sept. 3, 1888  
W. S. Hanna  
County Surveyor