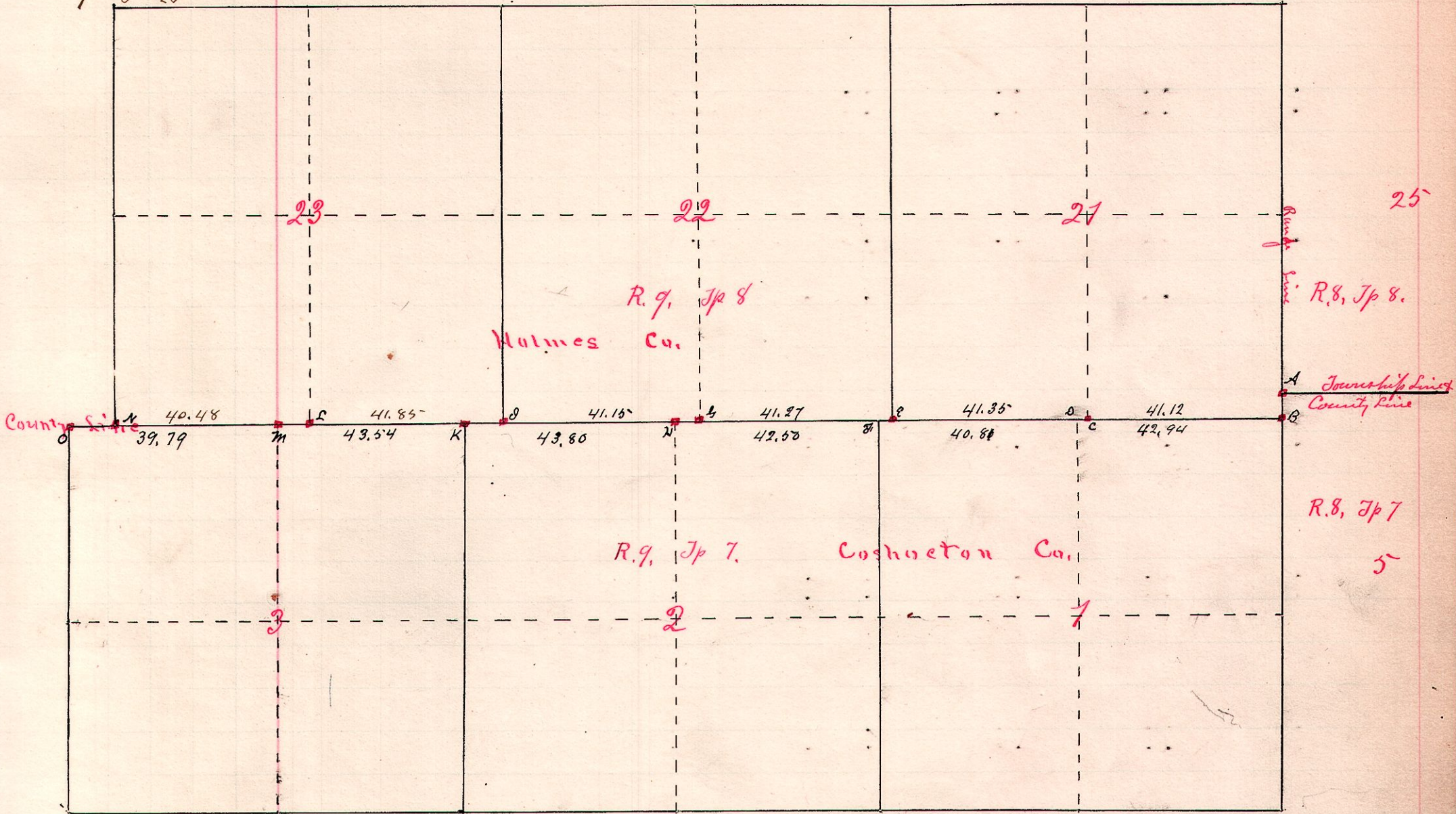


No. 145

R Tp Sec  
9 8 21  
23



This survey was made by order of the Commissioners of Holmes and Coshocton Counties to determine the county line and set stones at section and quarter section corners along the same.

The original notes of Sees 1 & 21 correspond and are identical, but as to the remaining part of the line, they do not agree, which indicates that the corners north of the line and those south are not identical. We found that subsequent to the original survey that local surveyors have changed the corner of Sect 20 so as to make breaks on the township line, which give rise to dispute, but as all indications are and were that, necessary in order to make a more equal division of the sections, we let them remain as we found them.

The irregularity in the divisions of the sections in Coshocton County, no doubt arises from (1) being on the closing line, (2) errors in original survey, (3) errors of local surveyors. The sections in Holmes County are very well divided, except

Sec. 23. As indicated on the Range line a break exists as shown at A & B

- of 6.66 chains. Witnesses at "A" { Hickory 7 - 411 ft - 5 ft. also Cross on Rock S 29 1/2 - 26 1/2 ft.
- Witnesses at "B" { B Oak 15 - 377 ft - 11 1/2 ft. also W Oak 16 - 422 ft - 47 1/2 ft.
- Witnesses at "C" { Hickory 7 - 411 ft - 5 ft. also B Oak 7 - 172 ft - 20 1/2 ft.
- Witnesses at "D" { Chestnut 23 - 374 ft - 20 1/4 ft. also B Oak 16 - 454 ft - 34 ft.
- Witnesses at "E" { B Oak 16 - 422 ft - 10 ft. also Chestnut 18 - 356 1/2 ft - 35 1/4 ft.
- Witnesses at "F" { B Oak 12 - 436 1/4 ft - 15 ft. also Chestnut 18 - 356 1/2 ft - 35 1/4 ft.
- Witnesses at "G" { Chestnut 20 - 349 ft - 25 3/4 ft. also W Oak 10 - 386 ft - 59 1/2 ft.
- Witnesses at "H" { W Oak 10 - 386 ft - 59 1/2 ft. also W Oak 30 - 319 1/4 ft - 53 1/4 ft.
- Witnesses at "I" { Original W.O. 172 ft - 19 links also Cross on rock N 57 ft - 36 3/4 ft.
- Witnesses at "J" Stone at south side of road.
- Witnesses at "K" Stone at south side of road.
- Witnesses at "L" Original W.O. 172 ft - 19 links also Cross on rock N 57 ft - 36 3/4 ft.

Breaks: A to B 6.66 ch; C to D 1.71 ch; E to F - Surveyors disagreed; G to H 2.51 ch; I to K, 5.20 ch; L to M 6.89 ch; N to O - 6.16 ch. Chain Carriers

"A" is the S.W. Cor Tp 8 R 8 and the N.W. Cor Tp 7 R 8. } Geo. Lefley, Thomas Lefley  
"B" is the S.E. Cor Tp 8 R 9 and the N.E. Cor Tp 7 R 9. } Henry Kylespach, Emmet Brown

Surveyors Samuel M. Moore of Coshocton & W.S. Hanna

Surveyed, June 27, 28, 29, & July 10, 11, 12 & 13, 1888

W.S. Hanna  
County Surveyor