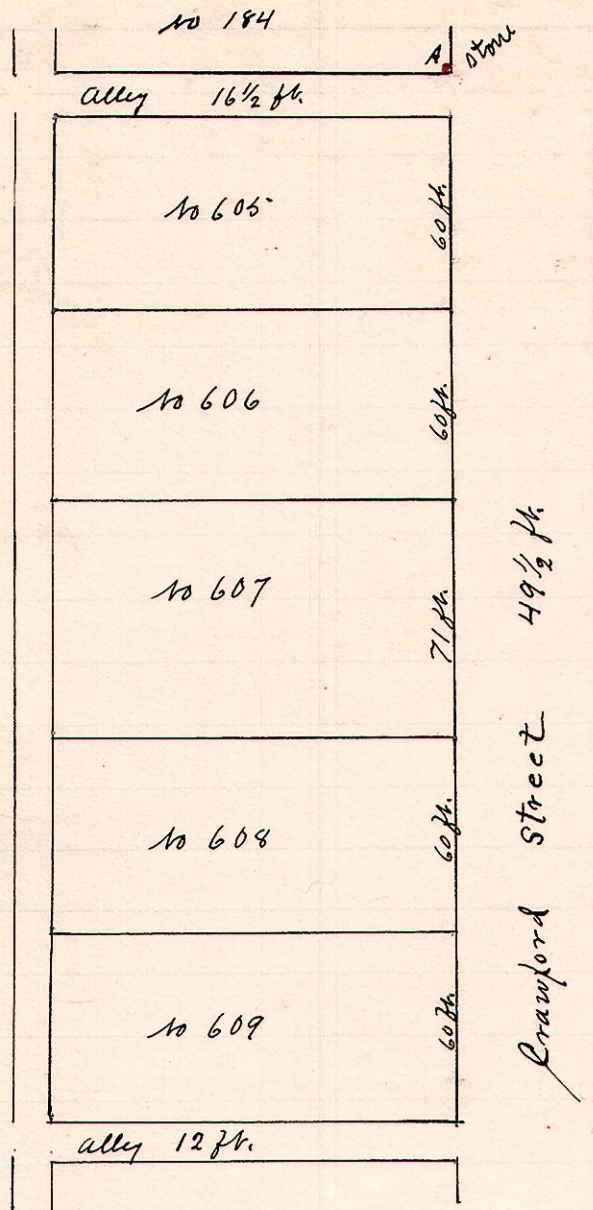


No. 140

R 7th Sec 19 Lot 6
7 9 607
608
609



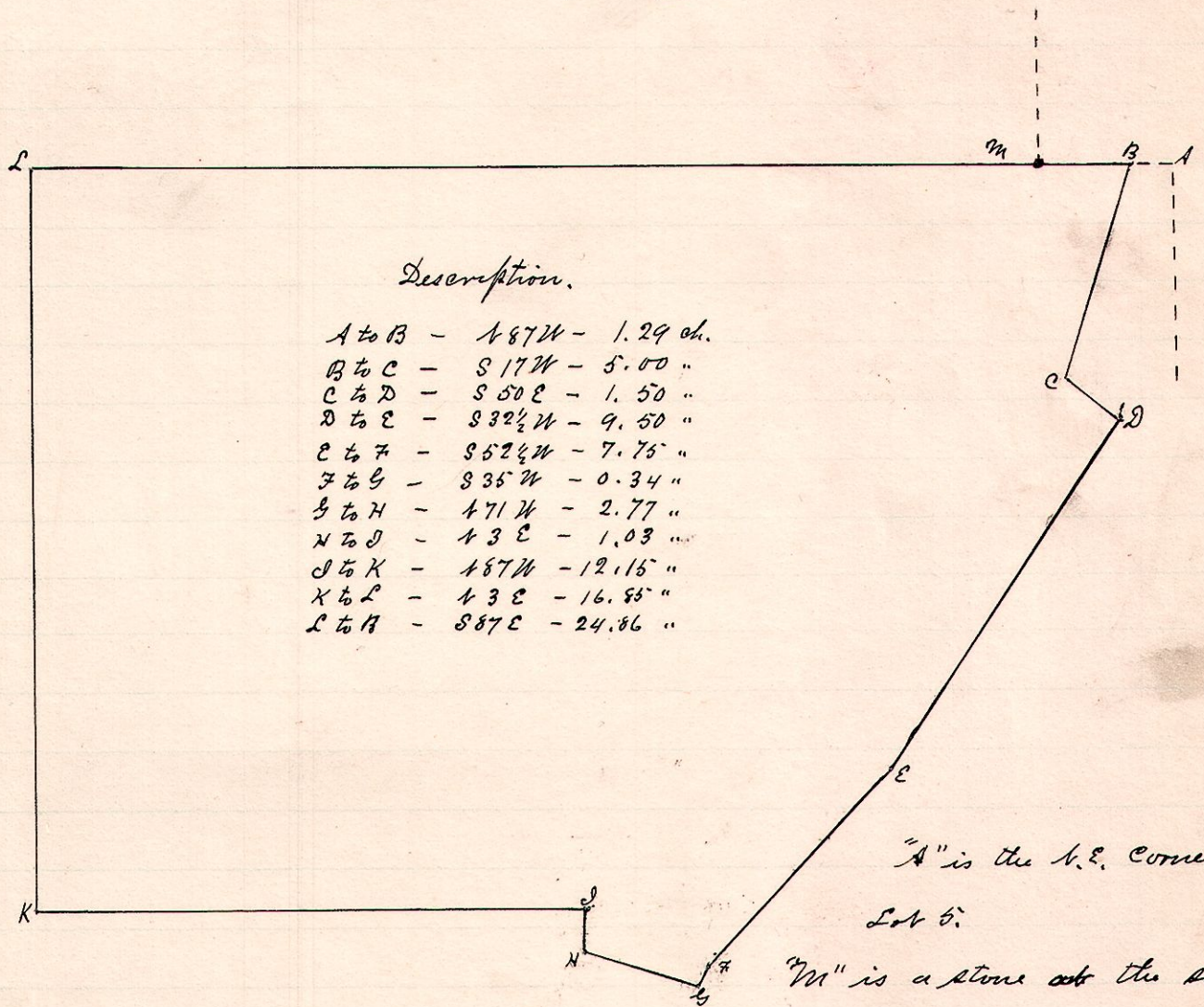
"A" is a standard stone at the S.E. corner of Lot No 184 and set by Samuel Robinson in 1871.

A survey made for Samuel N. Schwartz to determine the lines and boundaries of Lots 607, 608 & 609 of the village of Millersburg and belonging to the estate of Geo Schnorr deceased

July 24, 1888
W. S. Hanna
County Surveyor

No. 141

R 7th Sec 27 Lot 5
7 10 4th 5



"A" is the N.E. corner of Lot 5.

"M" is a stone at the south corner of Lot 386 and is 3.65 chains from B.

Surveyed for Geo. Arnold, and sold to Mrs Orthmeff
Surveyed Aug 10, 1888

W. S. Hanna
County Surveyor