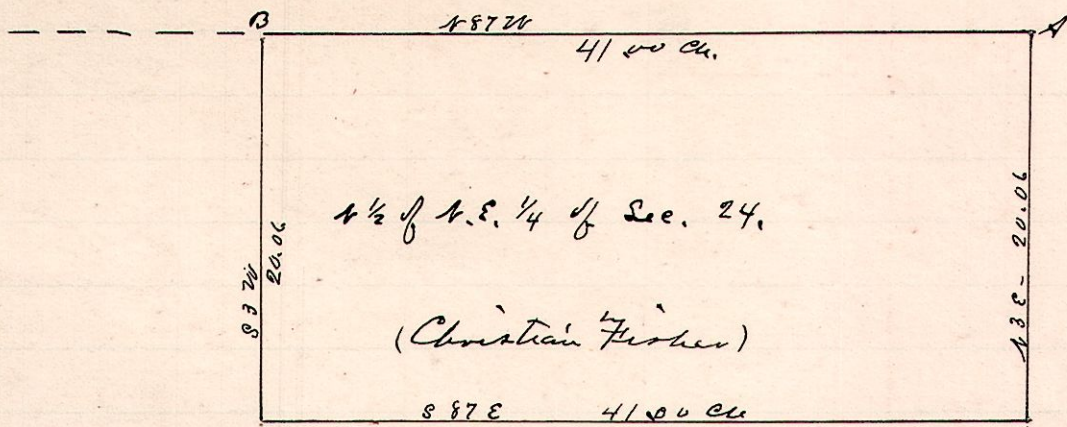


No. 134.

R 7 1/2 Sec 24 Pt
4 8 24 N.E. 1/4



A is the N.E. corner of Sec 24, T₈ R₄, Range 4.
B is a stone at the N.W. corner of N.E. 2₄ of Sec 24

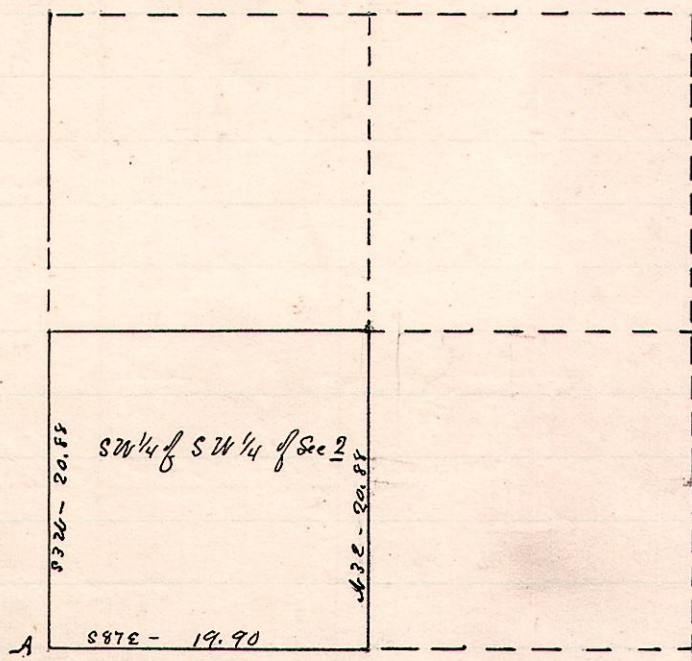
Jacob Schlupf
Helman } appraisers
W.S. Hanna

June 4th, 1888

W.S. Hanna
County Surveyor

No. 135

R 7 1/2 Sec 2r Pt
7 8 2 SW 3/4



A is a stone at the S.W. corner of Sec 2.
Stamp of witness east of A is well preserved

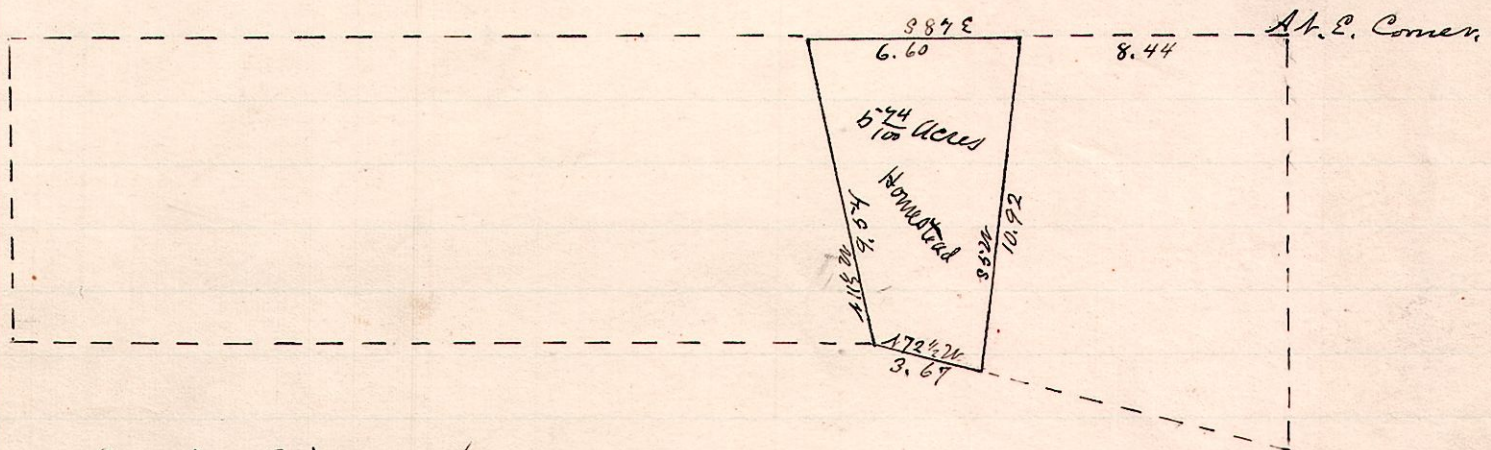
Surveyed for Frank Corberand, June 5, 1888.

W.S. Hanna
County Surveyor.

Paid to him June 7. 88

No 136

R 7 1/2 Sec 2r
7 8 17 N.W.



Original witnesses found as A

Bench S22W-43

" N15E-31

Homestead set off to John Patterson by order of

Probate Court.

Simon Chapman

Chas Casey

W.S. Hanna

Commissioners

Surveyed June 8, 1888

W.S. Hanna
Co. Surveyor