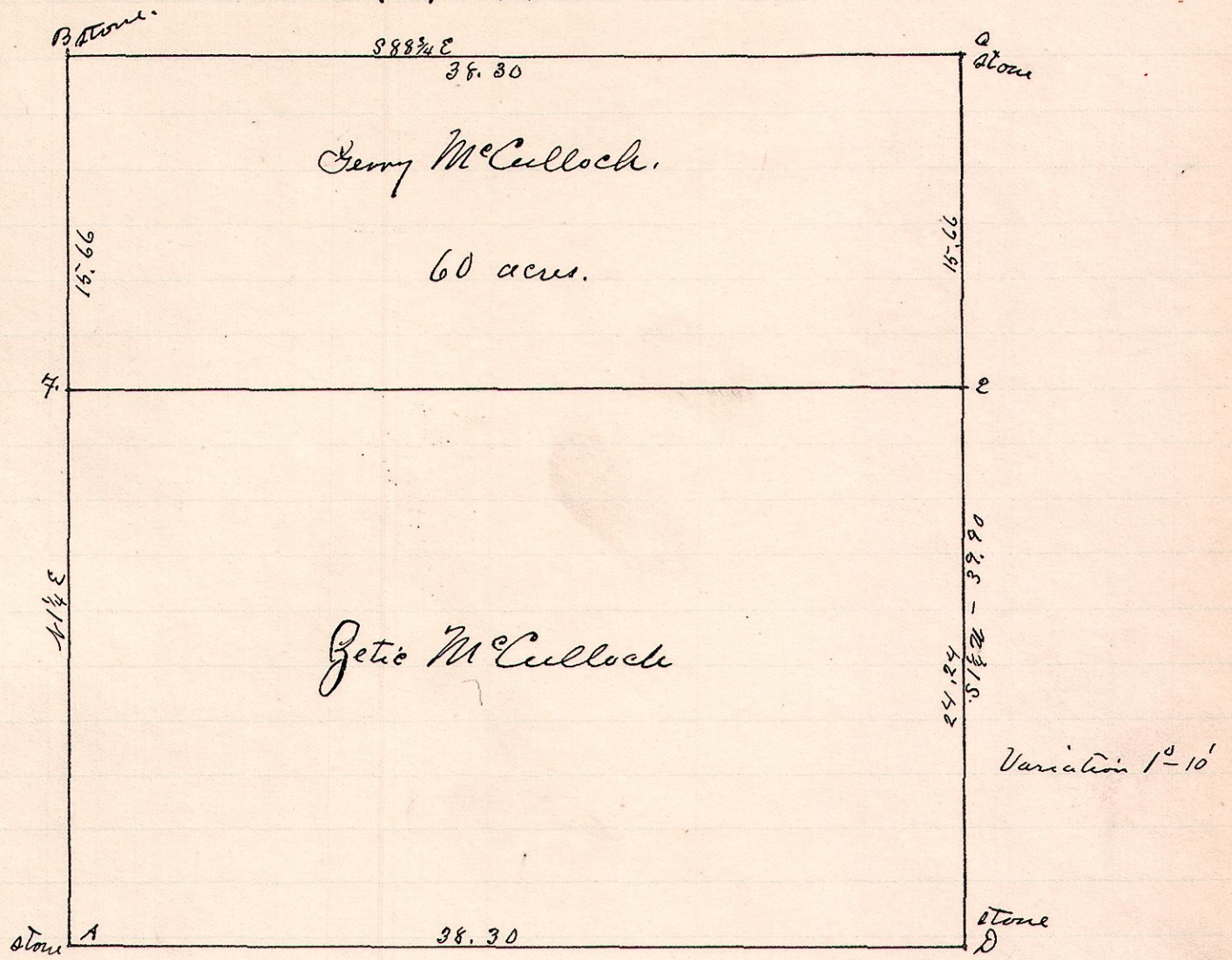


No. 126.

R 7th Sec 2nd
13 13 1 SW



A is a stone at the S.W. Corner of Sec 1, T^h 13, R. 13 with the original witness, the Beech still standing in the Public Road.

B is a stone at the north west corner of the south west quarter of Sec 1, look witness to B - Walnut 17 - S 33 1/2 E - 13 links.

C is the center of Sec. 1. a stone marks the point with the following witnesses: Beech - S 68 1/2 E - 20th Beech - N 18 W - 23rd Chestnut 15 - S 45 W - 13 links

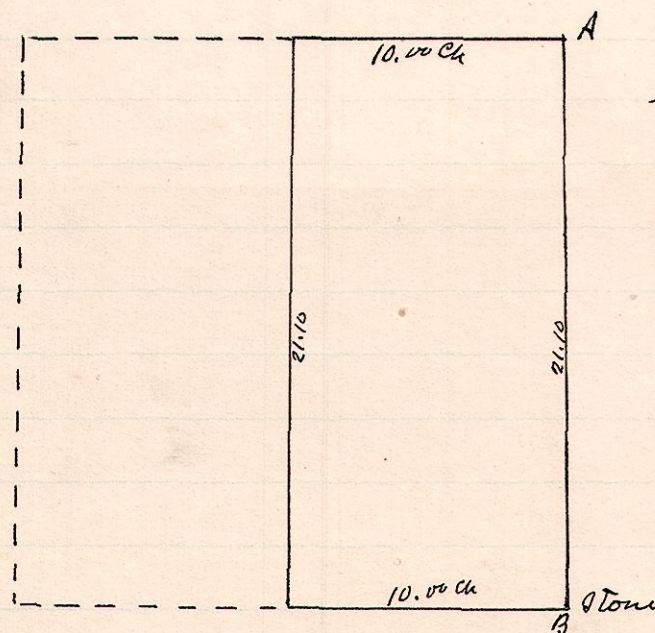
Set stone at D. Run line 7 E and set posts at each end.

Surveyed the above for David M^c Culloch
April 25, 1888. —

W. S. Hanna
County Surveyor

No. 127.

R 7th Sec 2nd Pt.
8 8 3 N.E. 1/4



A is the north east corner of Sec 3.
Township 8, Range 8.
B is a stone in low ground.

A survey made for Samuel Daniels of the east part of the N.E. 2nd of the N.E. 2nd of Sec 3, T^h 8, R 8 which was sold to Duncan Gray.
May 2, 1888

W. S. Hanna
County Surveyor