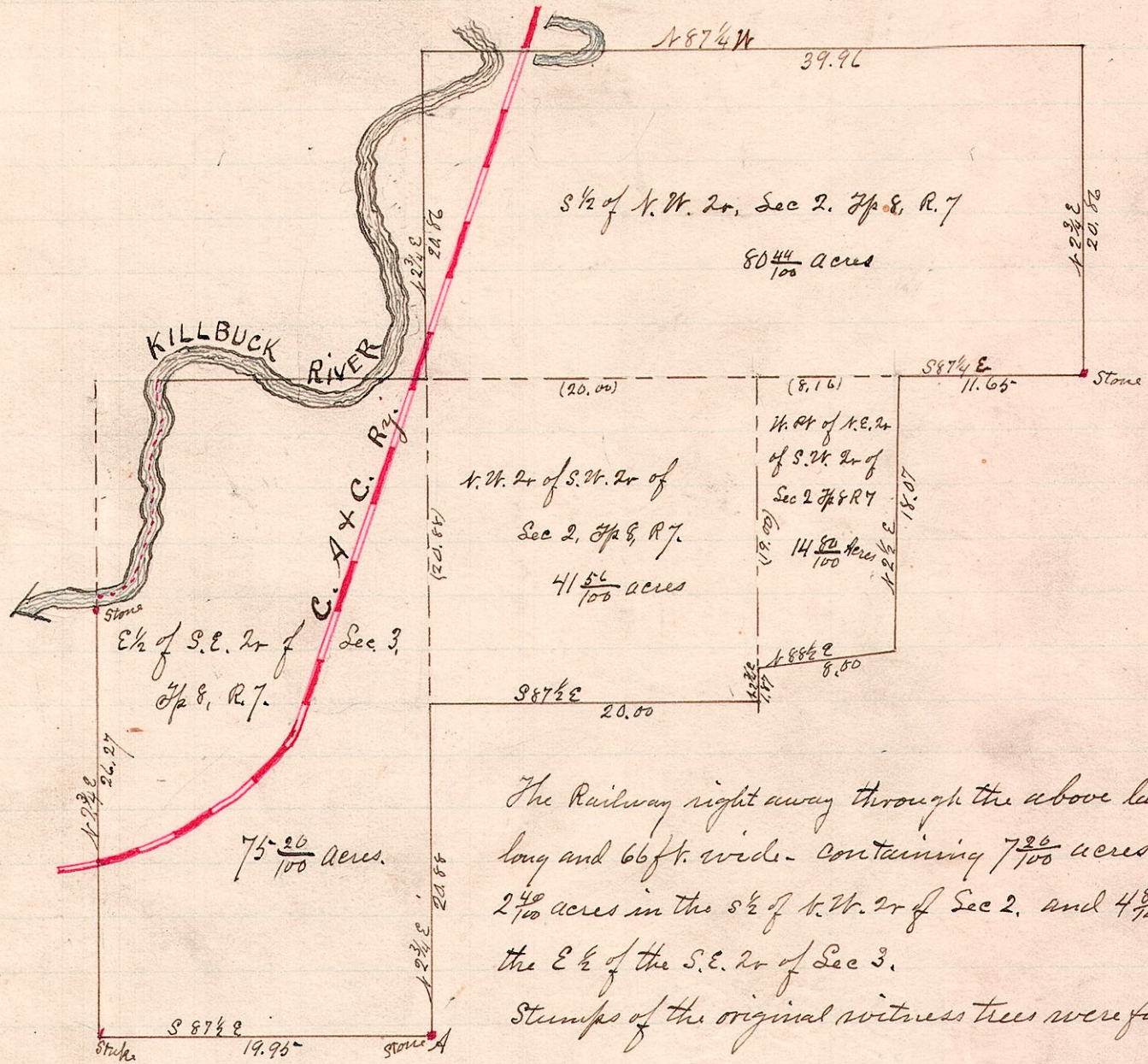


No. 114

R 7 1/2 Sec 2 Pt 1
 8 3 32 1/2



The Railway right away through the above lands is 4759 ft. long and 66 ft. wide - containing 7 26/100 acres, or 2 7/10 acres in the S 1/2 of N.W. 2r of Sec 2, and 4 80/100 acres in the E 1/2 of the S.E. 2r of Sec 3.

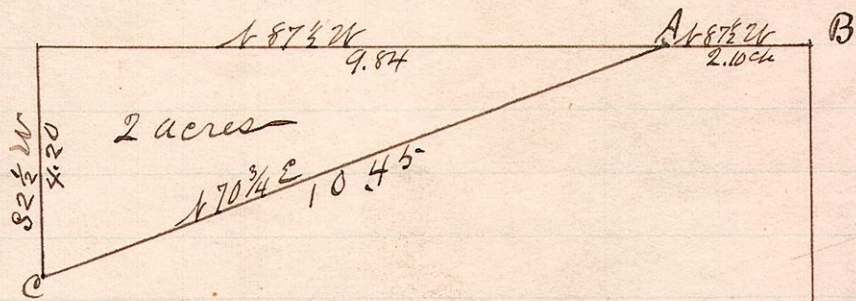
Stumps of the original witness trees were found at A

Surveyed the above for John Yoder Sen on the 8th & 13th days of February A.D. 1885.

W.S. Hanna
 County Surveyor

No. 115

R 8 1/2 Sec 4 Pt 1
 8 8 4 S.E. 1/4 1/2



A C is the line of a public road
 B is the N.E. corner of Thomas Truckee's land and marked by a stake in a fish pond
 D is the S.E. Cor of Sec 4.

Surveyed the above for John Mackey on February 16, 1888

W.S. Hanna
 County Surveyor