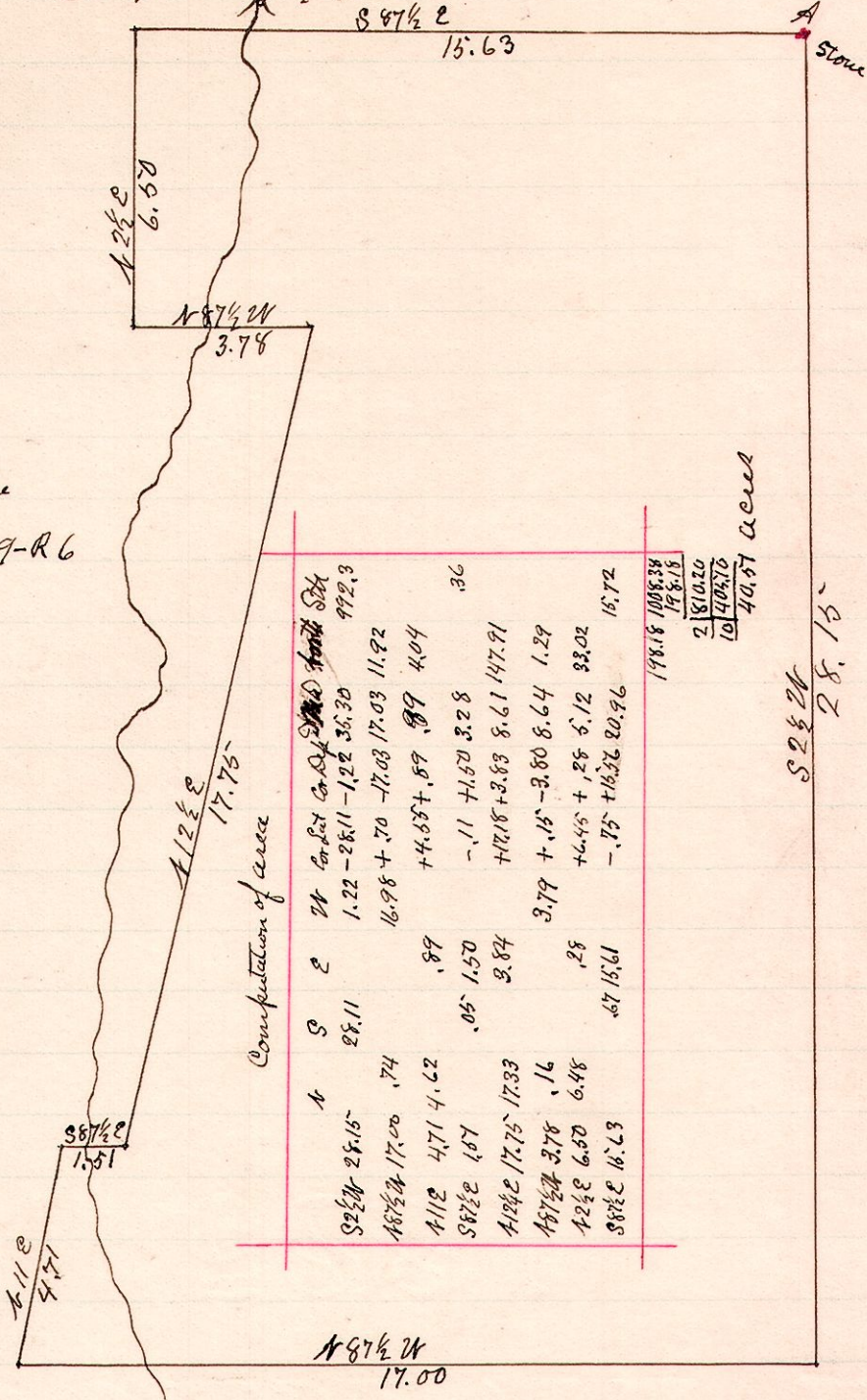


R 6p Sec 2r  
6 9 13 SW

No. 112

A is the N.E. Cor of the  
S.W. 2r of Sec 13, Tp 9-R 6

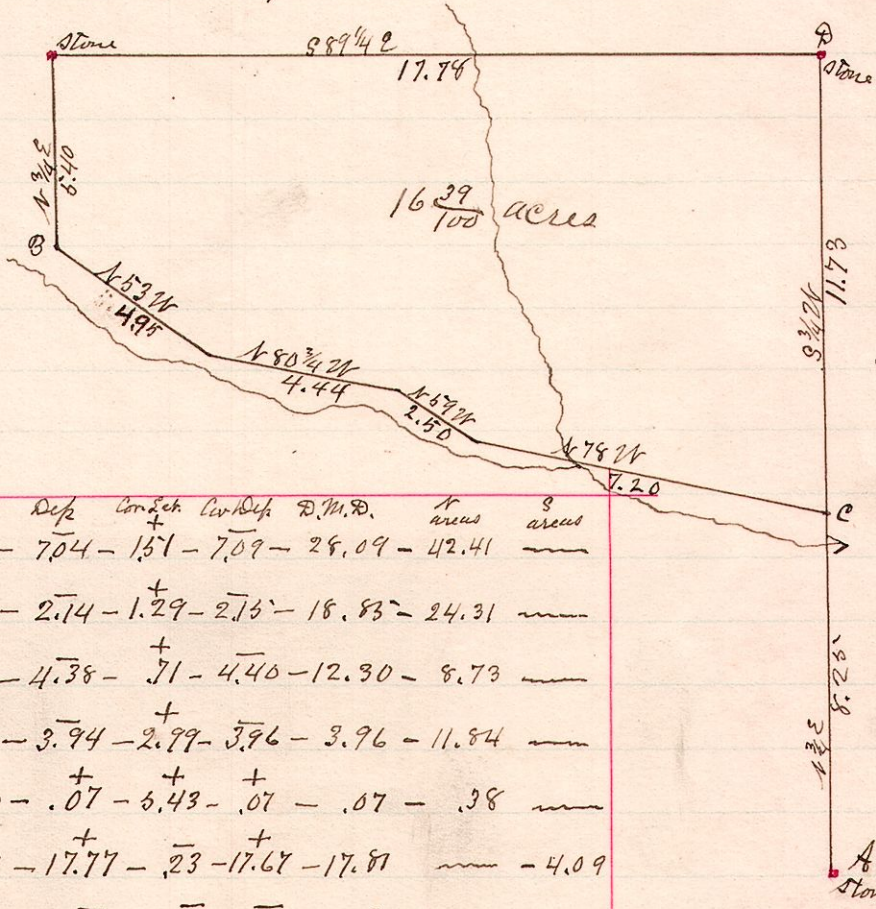


Surveyed the above for David Yoder Feb. 3, 1888.  
W. S. Hanna,  
Co. Surveyor.

R 7 Sec 2r  
13 14 32 SW

No. 113

A is the S.E. Cor of the  
S.W. 2r of Sec 32, Tp 14  
Range 13.



Surveyed the above for Samuel J. Cutter  
Feb. 9, 1888.  
W. S. Hanna  
County Surveyor