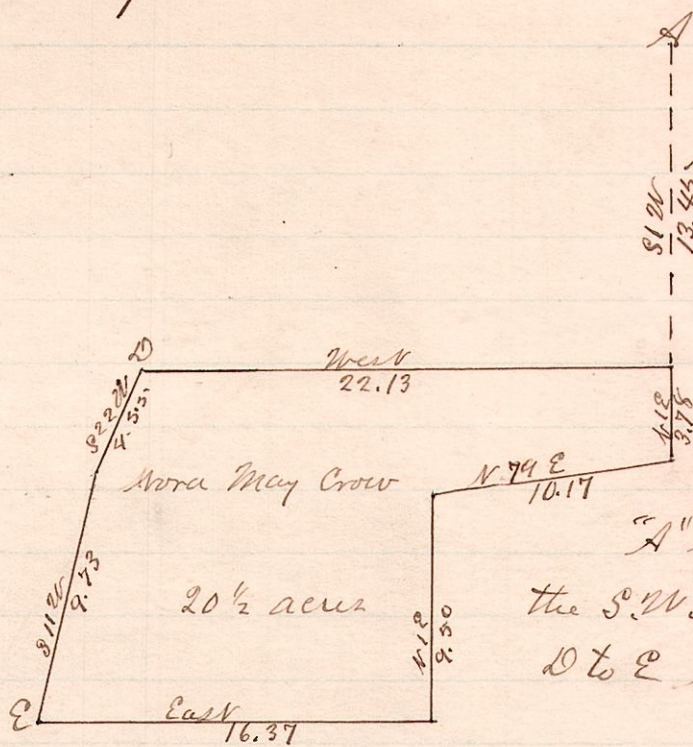


No. 95.

R 7p Sec 2r
11 14 5 SW

Parker }
Knopp } Com.
Hanna



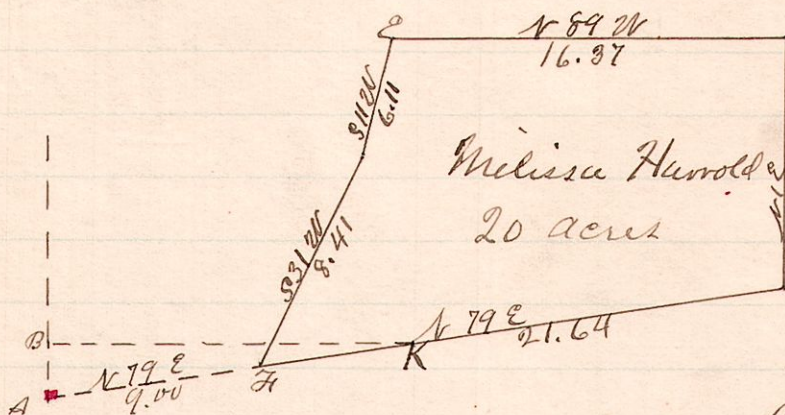
"A" is the N.E. Corner of the S.W. 2r of fractional Sec. 5. D to E is the center of pub road

A survey made by order of Court of Common Pleas in Partition
Aug. 3 & 4, 1887.
W.S. Hanna,
County Surveyor.

No. 96.

R 7p Sec 2r
11 14 5 SW
8 N.W.

Parker }
Knopp } Com.
Hanna



ABK is fractional section 8. "A" is a stone at the S.W. Cor of fractional Sec 8. "B" is the S.W. Cor. of fractional Sec 5.

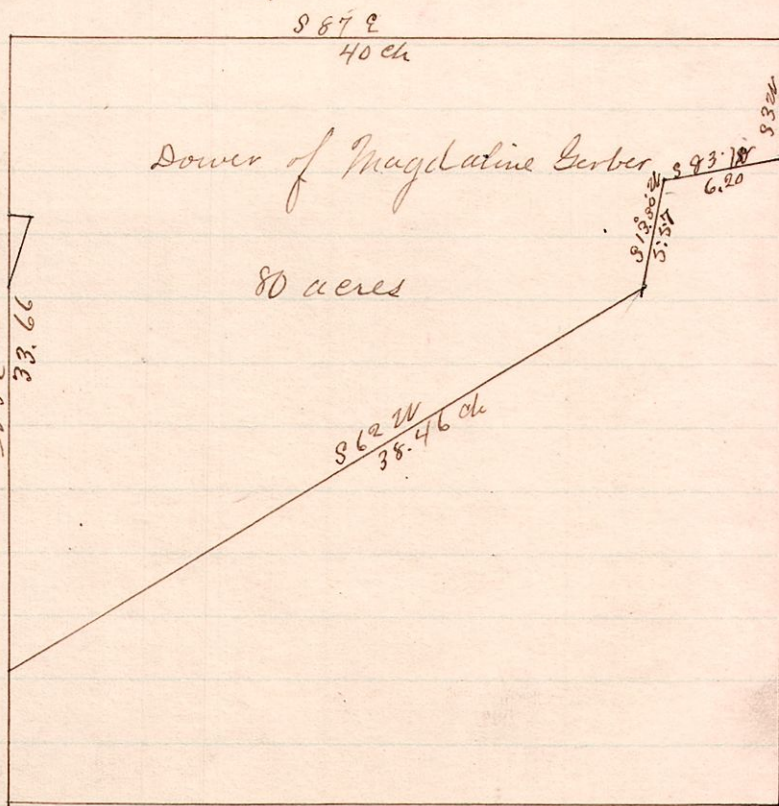
AC is the Indiana Boundary Line C is the S.E. Cor of fractional Sec 5.

A survey made by order of Common Pleas Court, in Partition.

W.S. Hanna,
County Surveyor.

No. 97.

R 7p Sec 2 Sec 2r
4 9 17 SW N



Scale 10 chs to inch

I hereby certify that the above is a correct copy of a survey made by W.C. Reed, January 19, 1886.

W.S. Hanna
County Surveyor