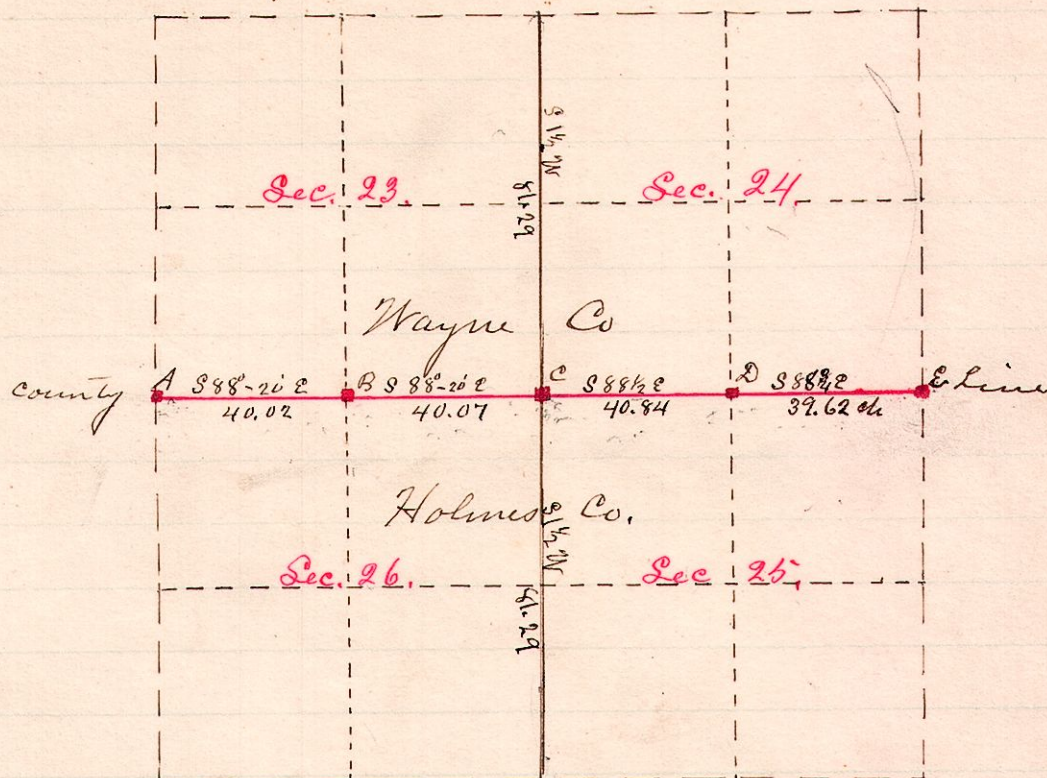


Plat to Report on foregoing Page.

R 7/2 Secs
14 18 $\frac{23}{24}$ $\frac{25}{26}$ Contax



Notes

- A. Stone — Witness — W. Oak — 14 — S88 $\frac{1}{2}$ E — 50 links
- B. Stone
- C. Stone — Witnesses {
 - Hickory — 8 — N22 $\frac{1}{2}$ W — 49 "
 - W. Oak — 21 — N34 $\frac{3}{4}$ W — 76 "
 - B. Oak — 12 — N47E — 88 "
 - B. Oak — 5 — S7 $\frac{1}{2}$ W — 70 "
- D. Stone. Witness — W. Oak — 15 — N83E — 5 "
- E Stone.

I hereby certify the above to be a correct plat of a survey made as reported of the preceding page of this volume Millersburg, Ohio. Dec. 7, 1887

W. S. Hanna
County Surveyor

No. 86.

Sta.	B.S.	Height of Inst.	Readings	Elevation	Grade	Cut	Fill
1. (Outlet of Sharrs Lake)	5.63	105.63		100.	97.50	2'-6"	
2.			5.50	100.13	97.41	2'-9"	
3.			4.40	101.23	97.02	4'-2 $\frac{1}{2}$ "	
4.			5.39	100.24	96.63	3'-7 $\frac{1}{2}$ "	
5.			4.24	101.39	96.24	4'-2"	
6.			4.94	100.69	95.83	4'-10"	
7.			5.37	100.26	95.46	4'-9 $\frac{1}{2}$ "	
8.	4.45	104.02	6.06	99.57	95.07	4'-6"	
9.			5.87	98.15	94.68	3'-6"	
10.			7.24	96.78	94.29	2'-6"	

A survey made for Philip Sharr to determine the fall between Sharrs Lake and Bonnetts Lake
Surveyed Oct. 25, 1887.

W. S. Hanna
County Surveyor