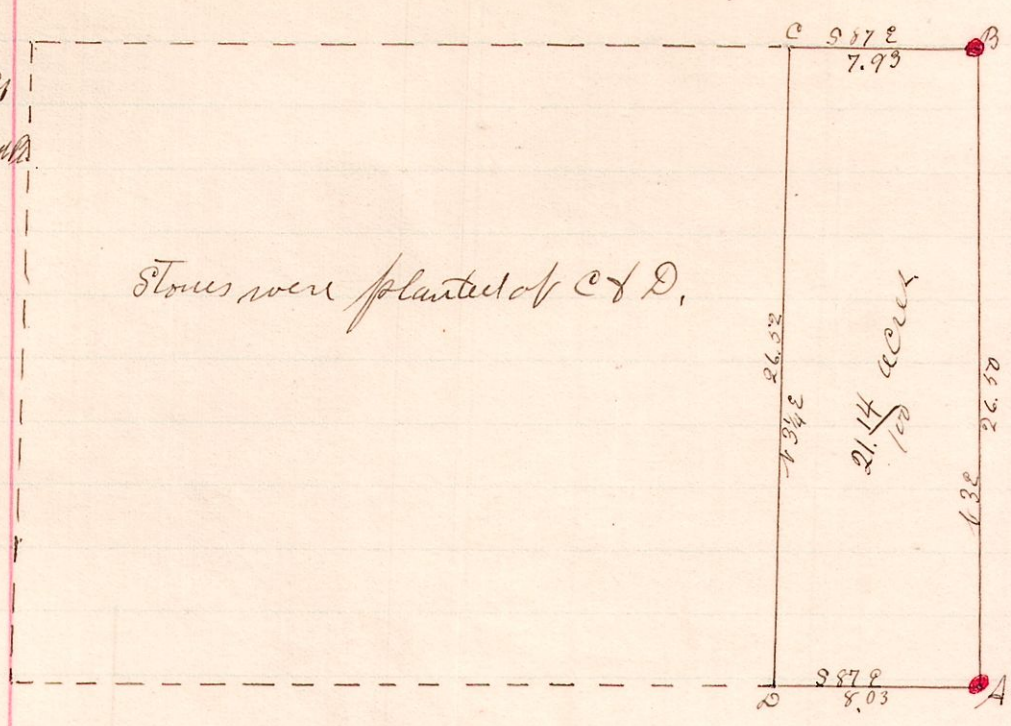


No. 74.

R 7p 2nd Lot 33
9 9 4 33 East



Stones were planted at C & D.

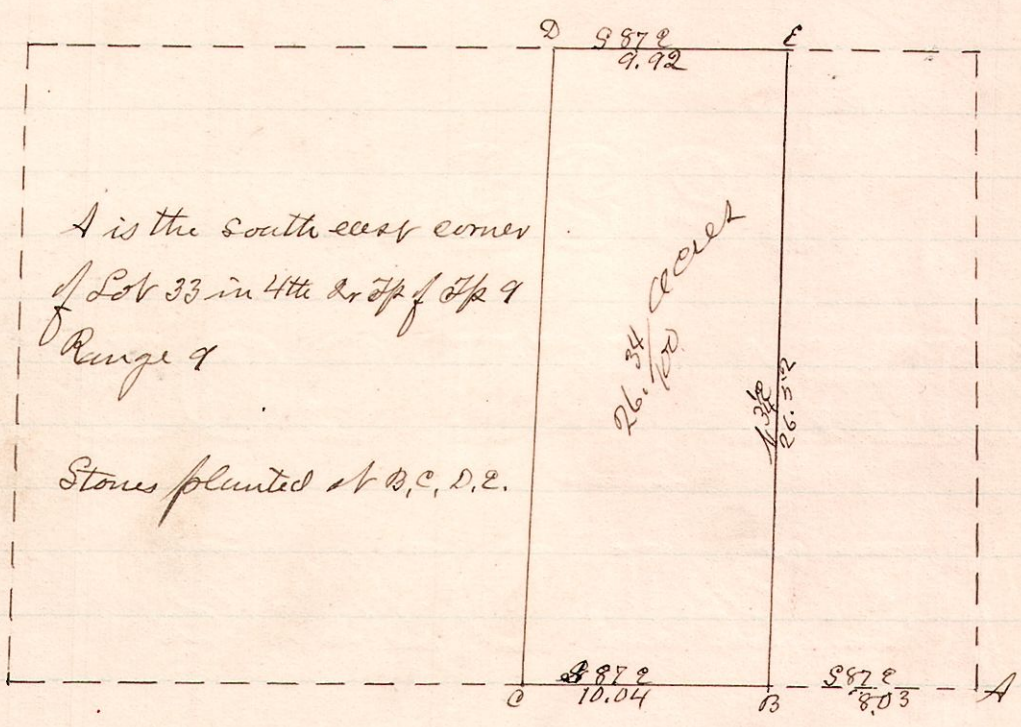
The Hickory stump of witness N 62 W - 22 links found at A and a stone planted at corner therefrom.

A white oak stump found which corresponded to the witness S 23 E 68 links from B and a stone established therefrom at B.

A survey made for Melott October 12, 1887.
W. S. Hamner
County Surveyor.

No. 75.

R 7p 2 1/2 Lot 33
9 9 4 33 Middle



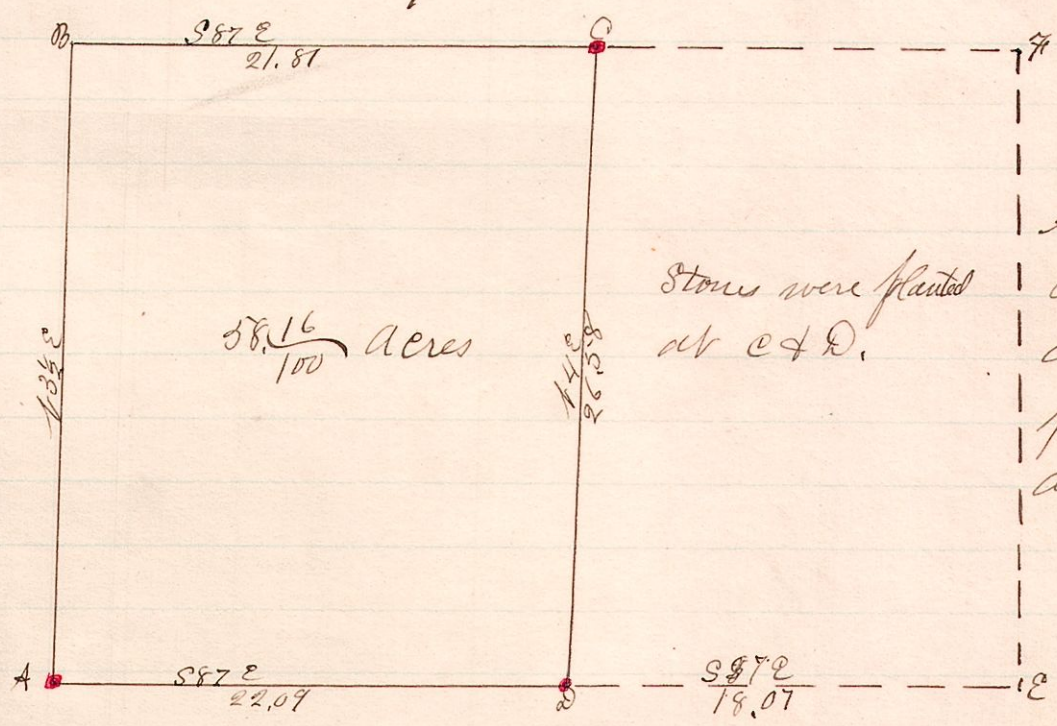
A is the south-east corner of Lot 33 in 4th R & 7p of 9 Range 7

Stones planted at B, C, D, E.

A survey made for Relans Remington Oct. 12, 1887.
W. S. Hamner
County Surveyor

No. 76.

R 7p 2 1/2 Lot 33
9 9 4 33 West



58.16 acres

A witness N 12 W - 17 links found at A and a stone was planted at the corner as marked

Surveyed the above for Henry Harris et al.
October 12, 1887.
W. S. Hamner
County Surveyor.