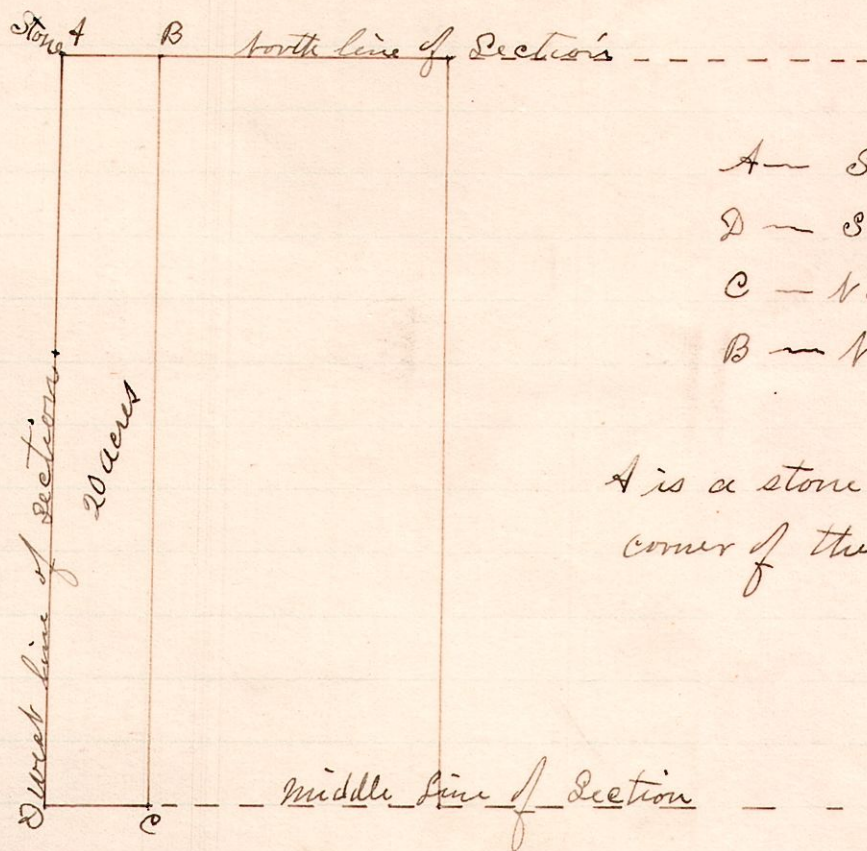


No. 54.

R 7 Sec 2, 2 Sec 2 Sec
8 8 18 NW 1/2



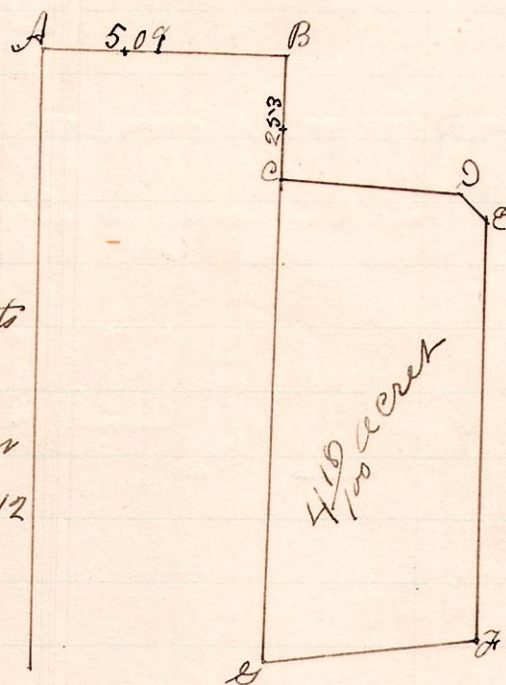
- A - S 32 W - 40.18
- D - S 87 E - 5.00
- C - N 3 E - 40.18
- B - N 87 W - 5.00

A is a stone at the north west corner of the section

Surveyed for Lee W. Harford June 16, 1887
W.S. Hanna
County Surveyor

No. 55.

R 7th Sec
12 14 12



A is a point in the center of the cross streets of Mt Hope, and at the north west corner of Fractional Section 12

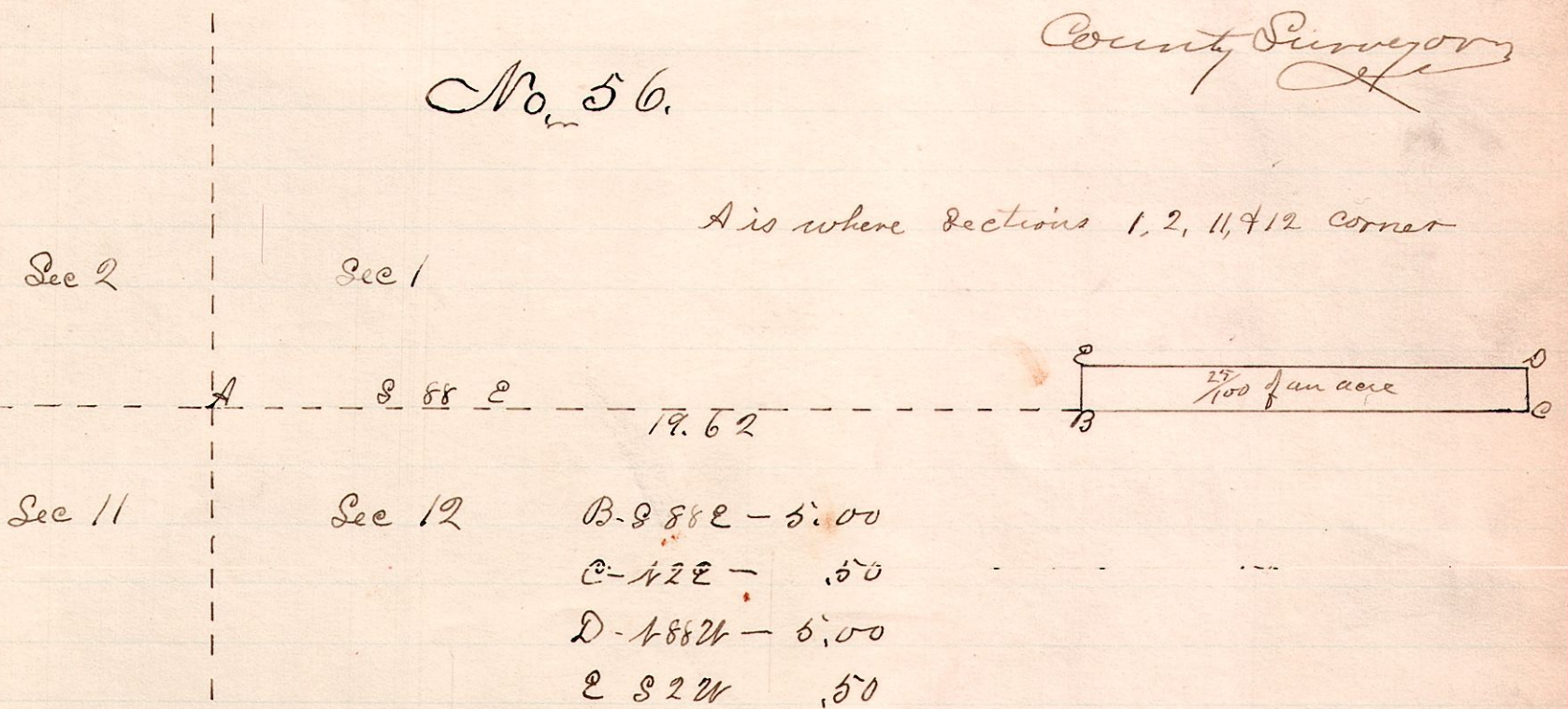
- C - S 88 E - 3.81
- D - S 44 E - .77
- G - S 2 W - 8.72
- F - S 83 W - 4.56
- E - N 2 E - 9.95

Surveyed the above for John Hain and Christian Reidenbach March 22, 1887.

W.S. Hanna
County Surveyor

No. 56.

R 7th Sec
12 14 1



A is where sections 1, 2, 11, & 12 corner

- B - S 88 E - 5.00
- C - N 2 E - .50
- D - N 88 W - 5.00
- E - S 2 W - .50

Surveyed the above for John Hain and Frank Deety March 24, 1887.
W.S. Hanna
County Surveyor