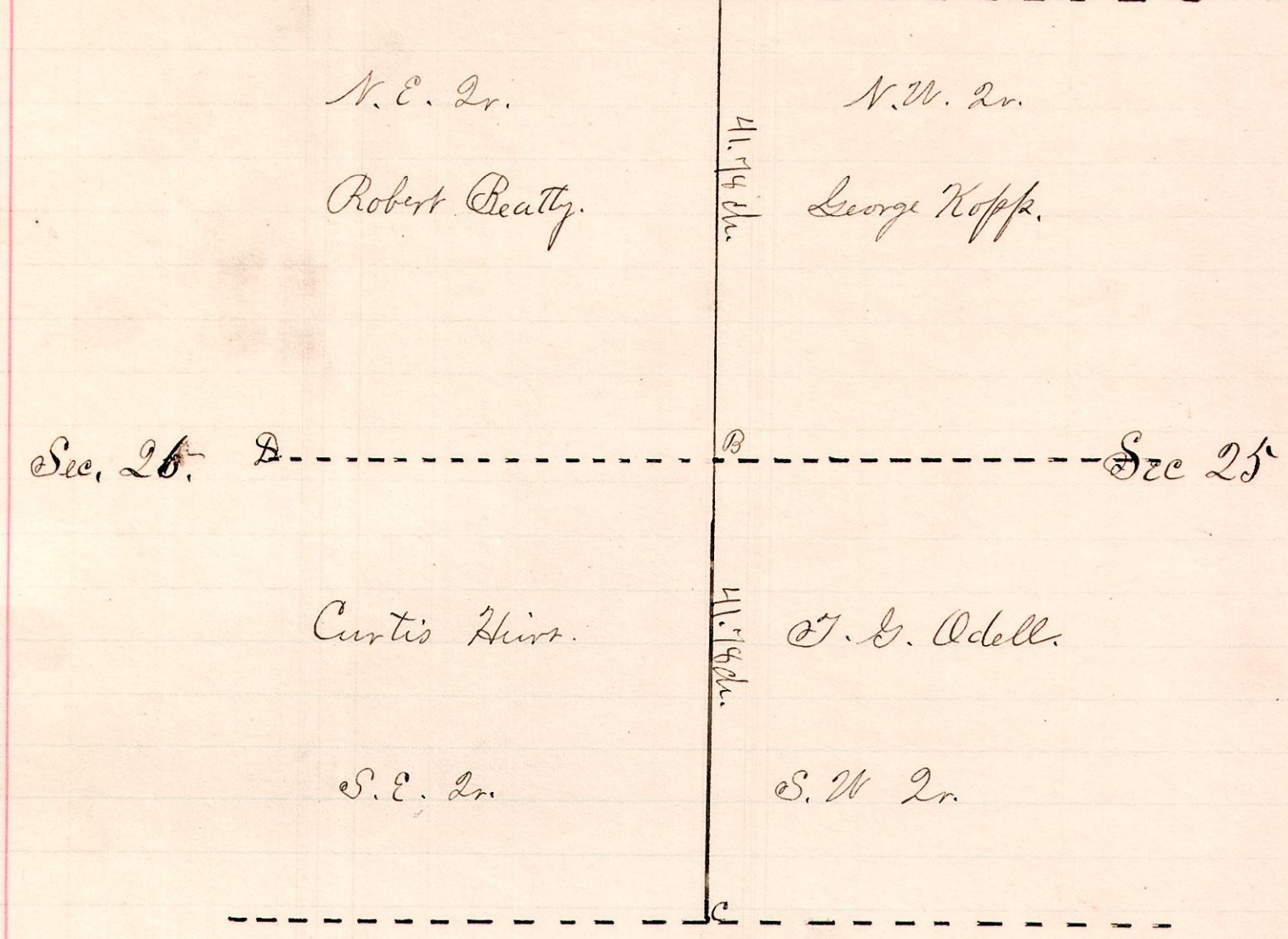


No. 42
Ashland County Wayne County

R 7 Sec 26
15 20 25
26

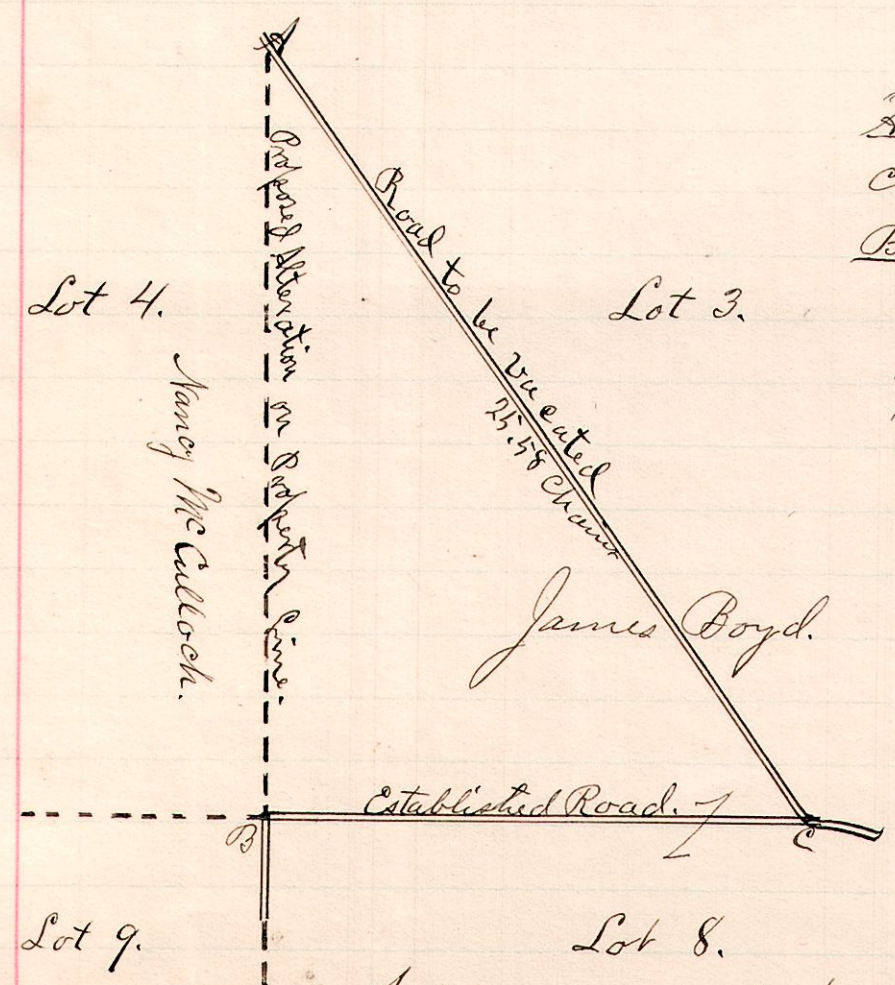


"A" is a stone on the north line of Holmes County and at the point where Ashland County and Wayne County corner.
 "C" is a stone where Sections 25, 26, 35, 36, corner in Twp. 20, R. 15.
 "D" is a stone in a swamp at the center of Section 26.
 "B" is the stone placed at quarter Sec. corner.
 A survey made to establish the quarter section corner between Sections 25 & 26, at the instance of Beatty, Kopp, Odell, & Curtis Hirt.
 March 30, 1887.

W.S. Hanna
County Surveyor

No. 43

R 7 27 Sec
6 9 1st 3



"A" is where Benton & Berlon road crosses west line of Lot 3.
 "B" is where lots 3, 4, 8, & 9 corner.
 "A" S 2 1/2 W 21.66 to B.
 "B" S 87 1/2 E 13.93 to C.

A. B. Albertson
Joseph Walters } Viewers
John Goder }

A survey made by order of County Commissioners to change the line of County road
 March 15, 1887.
 W.S. Hanna
County Surveyor