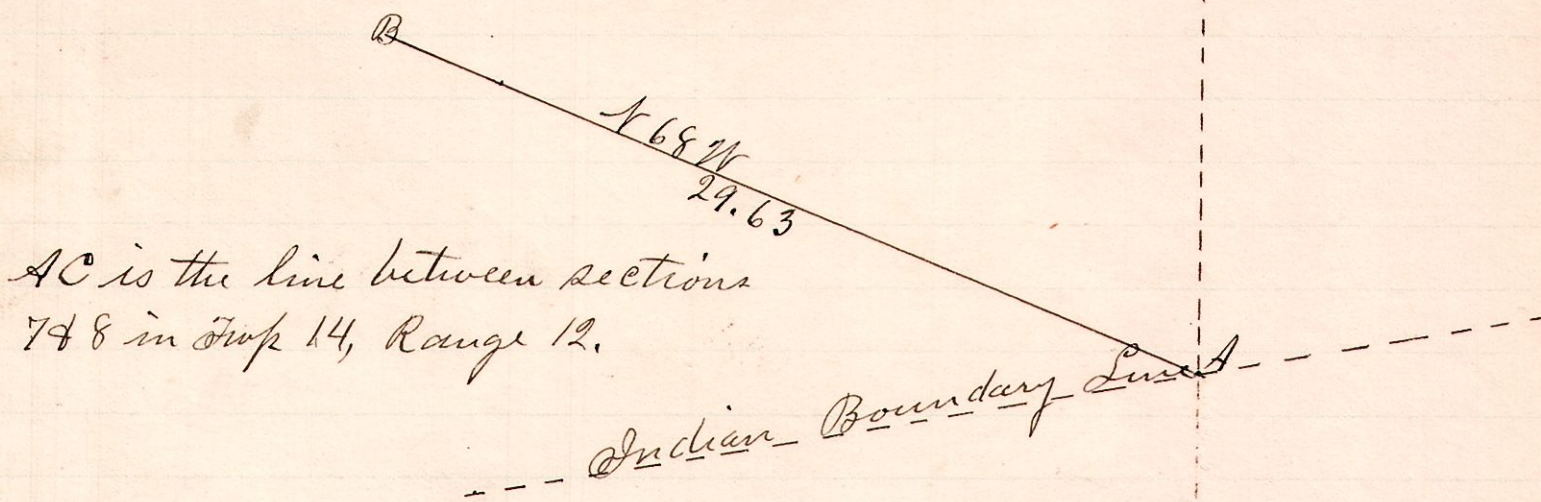


No. 40.

R Twp S. 20.
12 14 7 SE

The stump of one witness tree, the cherry 1212, 26 links C found.



AC is the line between sections 748 in Twp 14, Range 12.

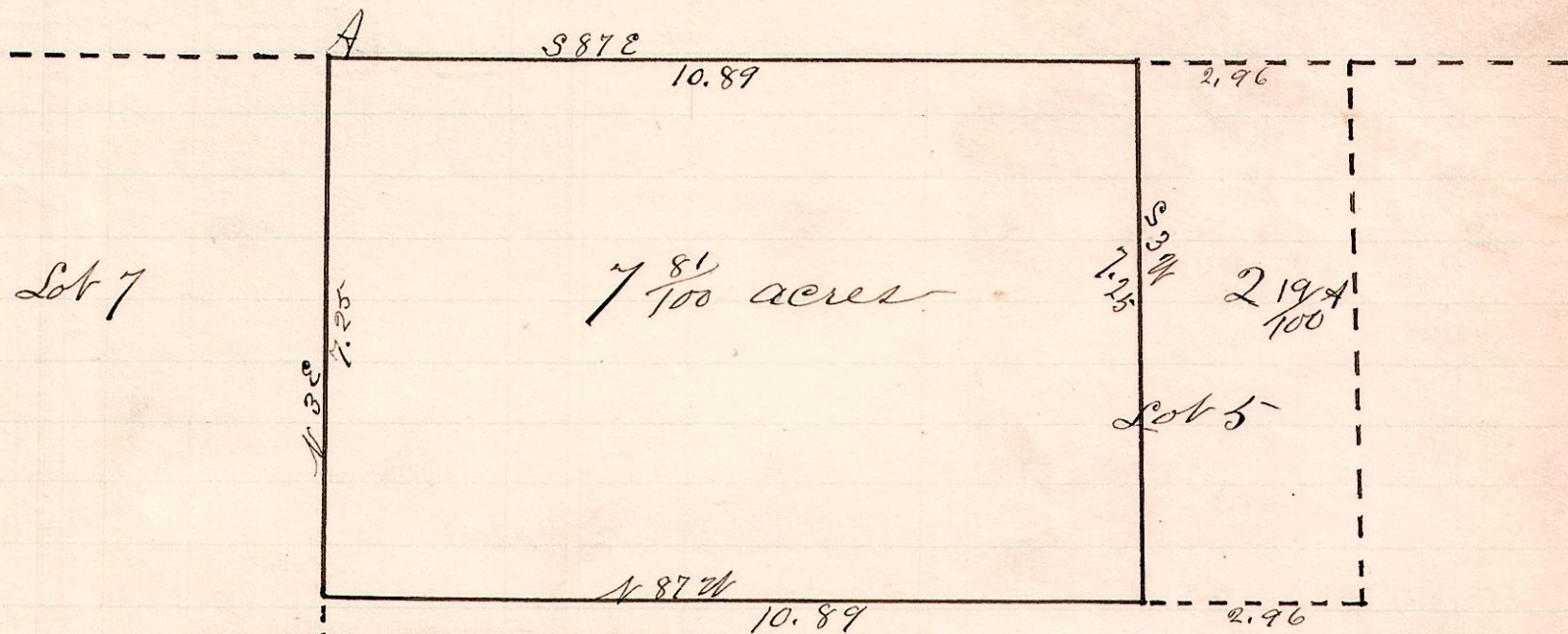
A survey made for Sedgwick Hester to establish the line AB in the above plat.
March 21, 1887.

C. S. Hanna
County Surveyor

No. 41.

Lot 6.

R Twp S. 20.
7 10 4 SE



"A" is where Lots 5 & 7 as above described corner on the south line of Lot 6.

A survey made at the order of County Auditor of a tract of land formerly belonging to George W. Childs, and sold to William Duncan for taxes.

March 31, 1887.

C. S. Hanna
County Surveyor