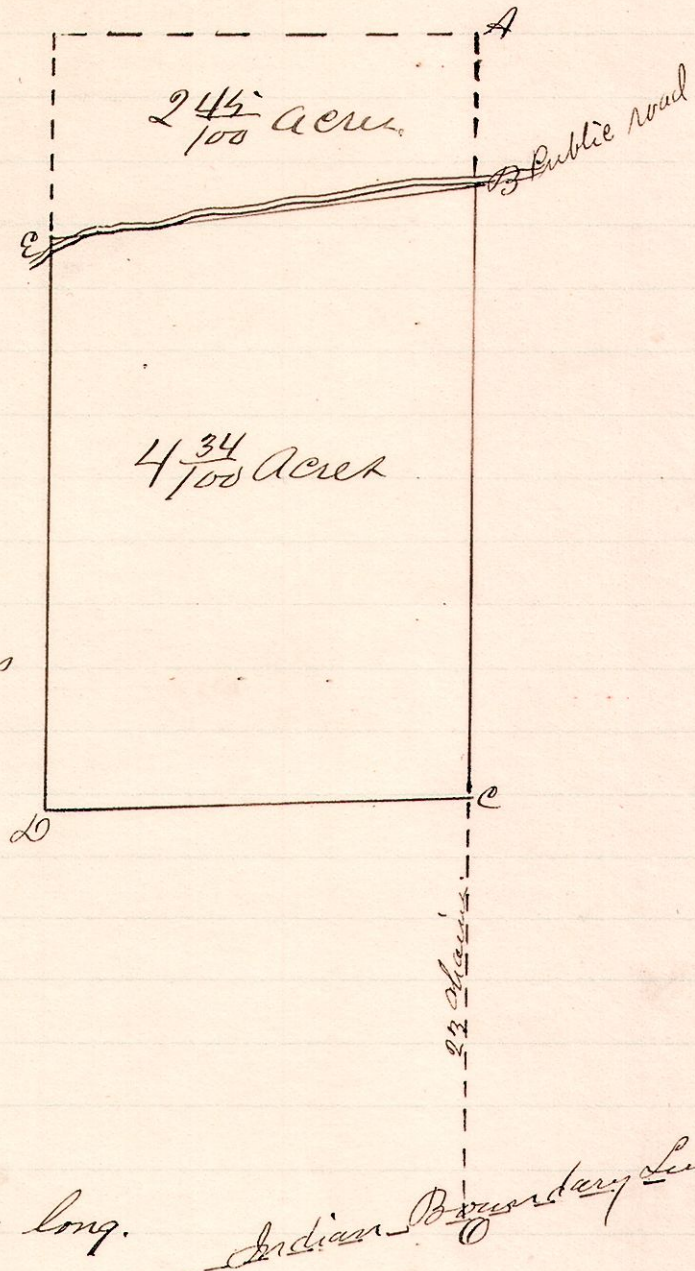


No. 38.

R Top 3 2r
12 14 7 SE

A is the north east corner of Lot 6 in Mast's addition to the town of Martinsville
B is 4.19 chains south of A,
C is 23 chains north of the Indian Boundary Line,
AC is the line between sections 7 & 8 as above described.



- Boundary
- B. S 1 1/2 E - 8.07 to C
 - C. S 88 1/2 W - 5.55 to D
 - D. N 1 1/2 W - 7.56 to E
 - E. N 79 E 5.91 to B

The line AC is 12.25 chains long.

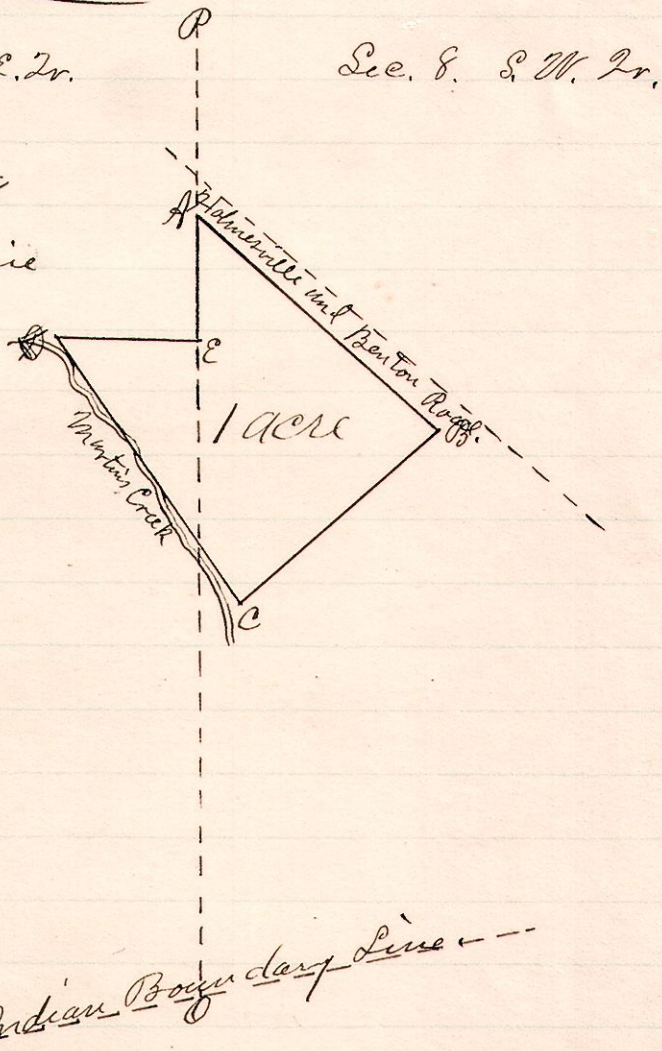
The above is a correct plat of a survey made for Alfred Snyder March 21, 1884.
W. S. Hanna,
County Surveyor.

No. 39.

R Top Sec 2r
12 14 7 SE

PO is the line between sections 7 & 8
A is a stone on said section line and in the road leading from Holmesville to Benton

- Description of Boundary.
- A. S 47 3/4 E - 4.20 to B
 - B. S 49 1/2 W - 3.50 to C
 - C. N 34 W - 4.21 to D
 - D. S 88 1/2 E - 1.78 to E
 - E. N 1 1/2 E - 1.78 to A



Stones on section line at A & E.

Surveyed for Sedgwick Caster March 21, 1867.
W. S. Hanna,
County Surveyor.