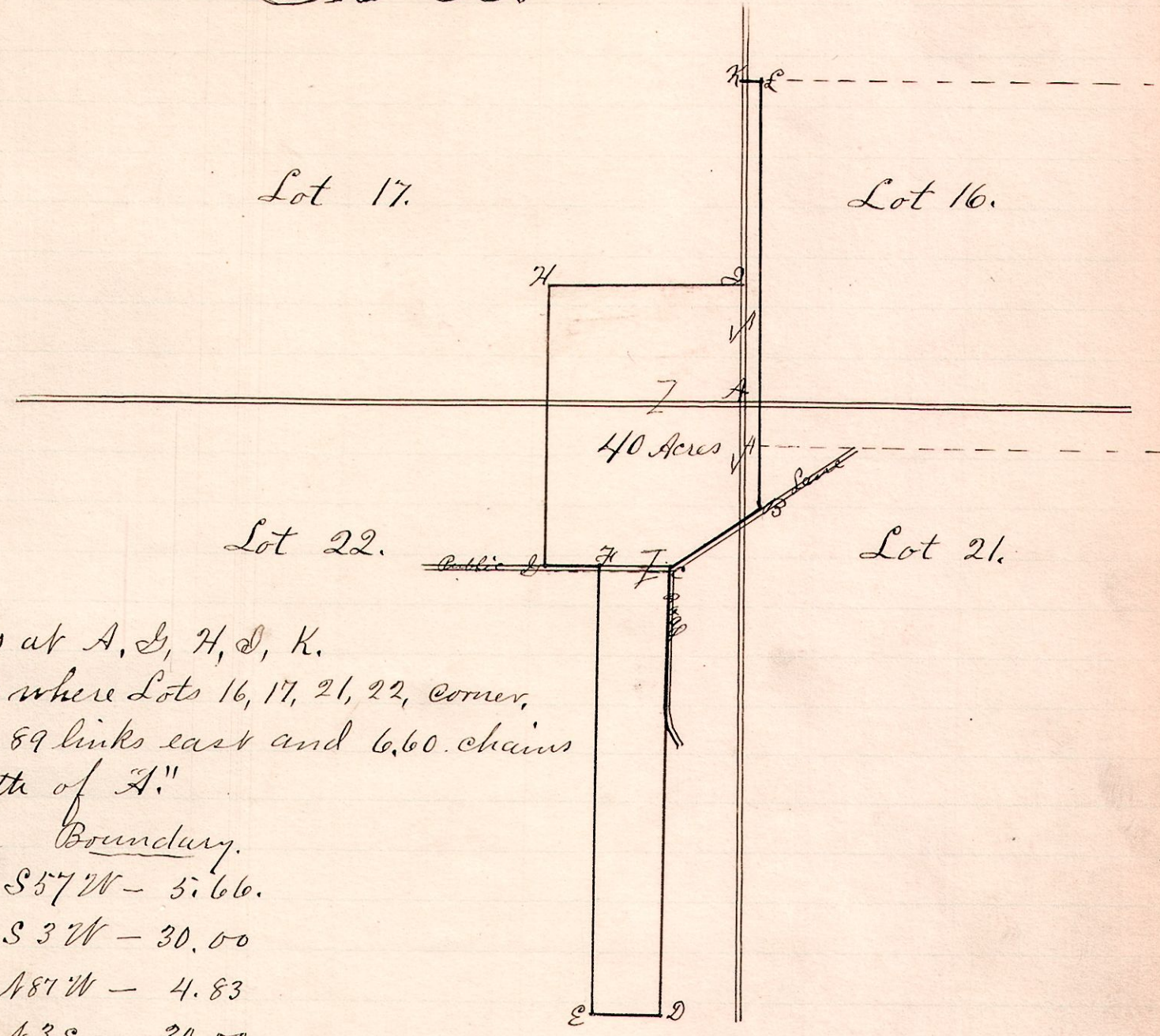


# No. 36.

R 7<sup>th</sup> 2<sup>nd</sup> Lot  
 7 9 3<sup>rd</sup> 16  
 17  
 21  
 22



Stones at A, G, H, I, K.  
 "A" is where Lots 16, 17, 21, 22, corner.  
 "B" is 89 links east and 6.60 chains south of A."

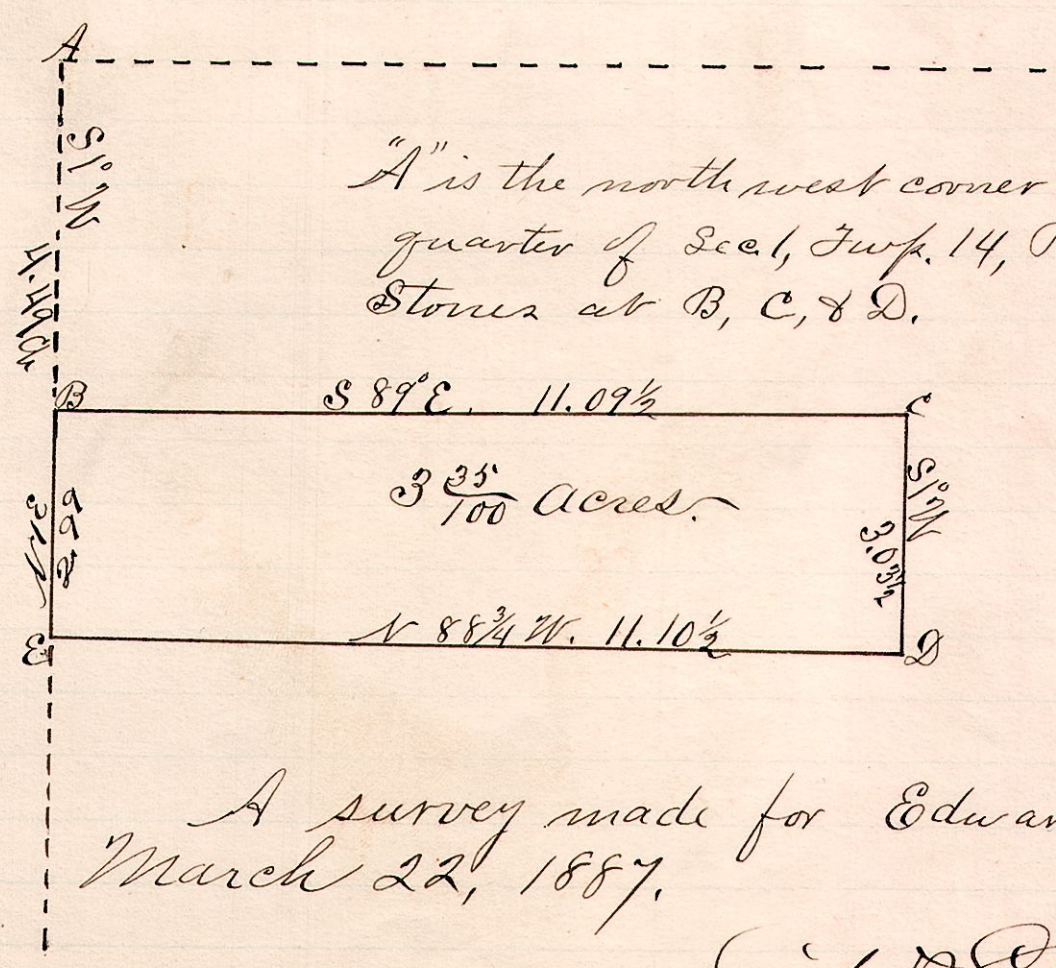
- Boundary.
- B. S57°W - 5.66.
  - C. S3°W - 30.00
  - D. N87°W - 4.83
  - E. N3°E - 30.00
  - F. N87°W - 4.57
  - G. N3°E - 18.71
  - H. S87°E - 12.75
  - I. N3°E - 11.45
  - K. S87°E - .90
  - L. S3°E - 26.05

E D is a part of the line between Killbuck and Hardy townships.

A survey made for Chas Bilderback, March 18, 1884  
 W.S. Hanna,  
 County Surveyor.

# No. 37.

R 7<sup>th</sup> Sec 2<sup>nd</sup>.  
 12 14 1 S.W.



"A" is the northwest corner of southwest quarter of Sec 1, Twp. 14, Range 12.  
 Stones at B, C, & D.

A survey made for Edward S. Names March 22, 1887.

W.S. Hanna,  
 County Surveyor.