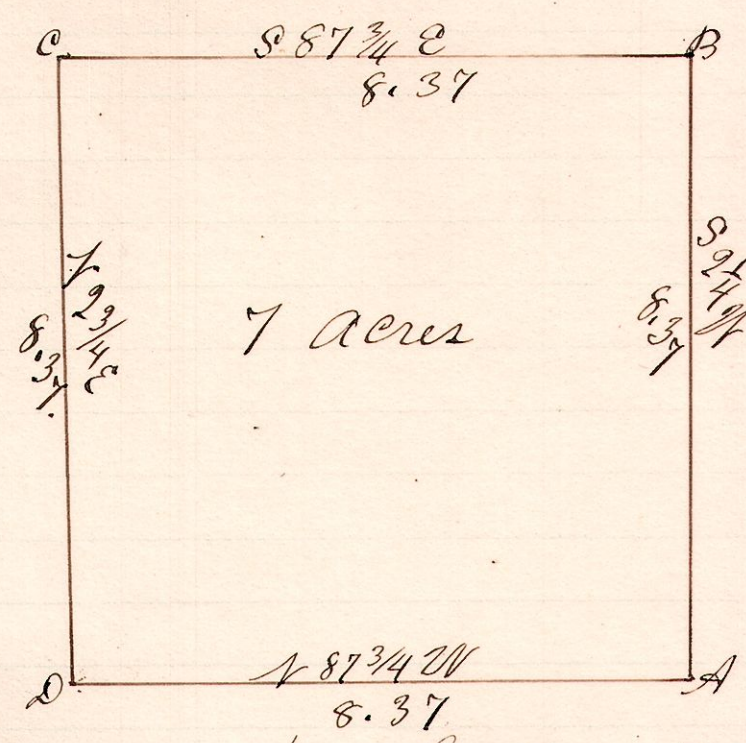


No. 34.

R 7 S 2r.
7 8 4 12.



A is the S. E. corner
of the N. E. 2r of Sec
54, Twp. 8, Range 7
B is a stone
C is a stone.

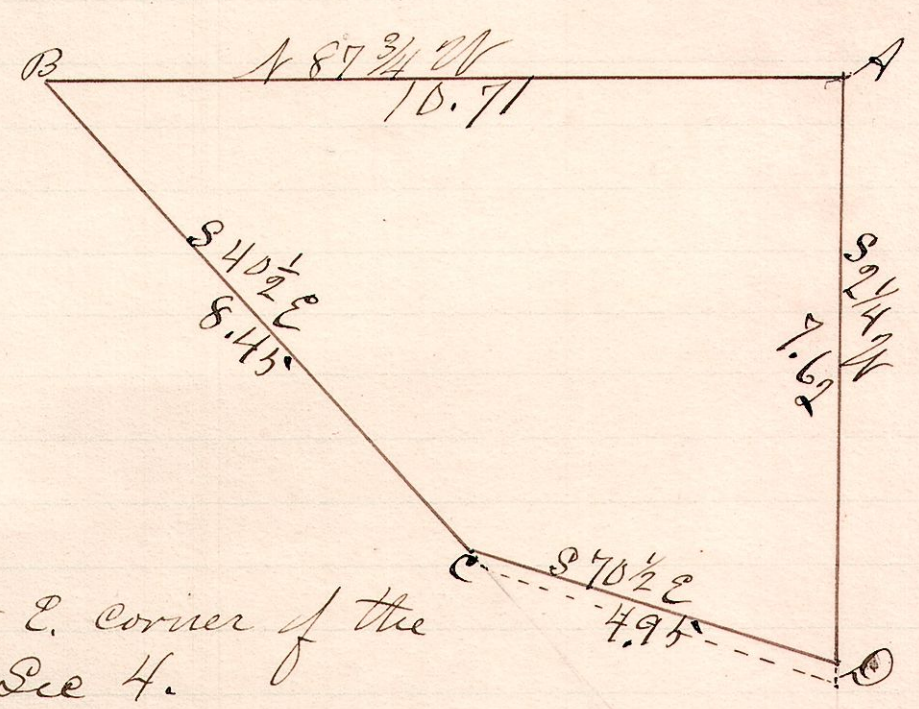
A survey made for Julius Kauffman to determine the corners and lines and area of the above described tract of land.

Feb. 3, 1887.

W. S. Hanna
County Surveyor

No. 35.

7 8 4 32.



A is the N. E. corner of the
S. E. 2r of Sec 4.

A survey made for Julius Kauffman to determine the lines and boundaries of the above described piece of land.

Feb. 3, 1887.

W. S. Hanna
County Surveyor