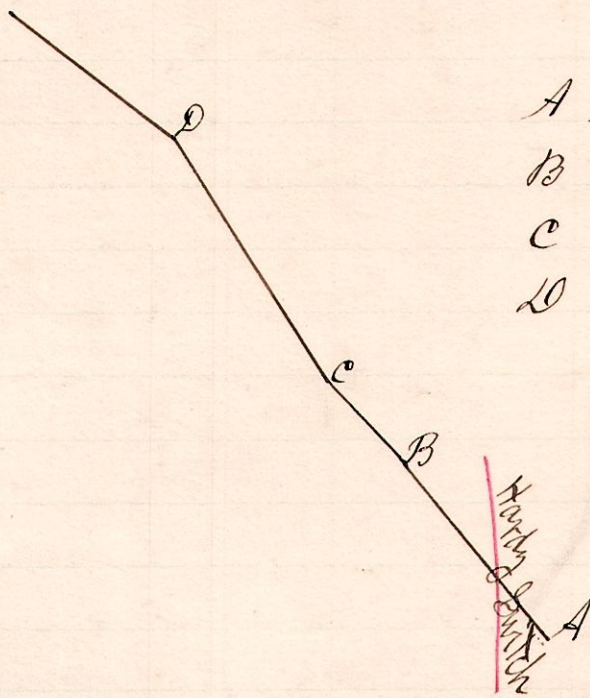


No. 32.

R 7 S
7 8 3 ^{SW}/₂



- A N 39° W 5.96
- B N 44 1/2° W 2.93
- C N 31 1/2° W 7.87
- D N 51° W 6.14

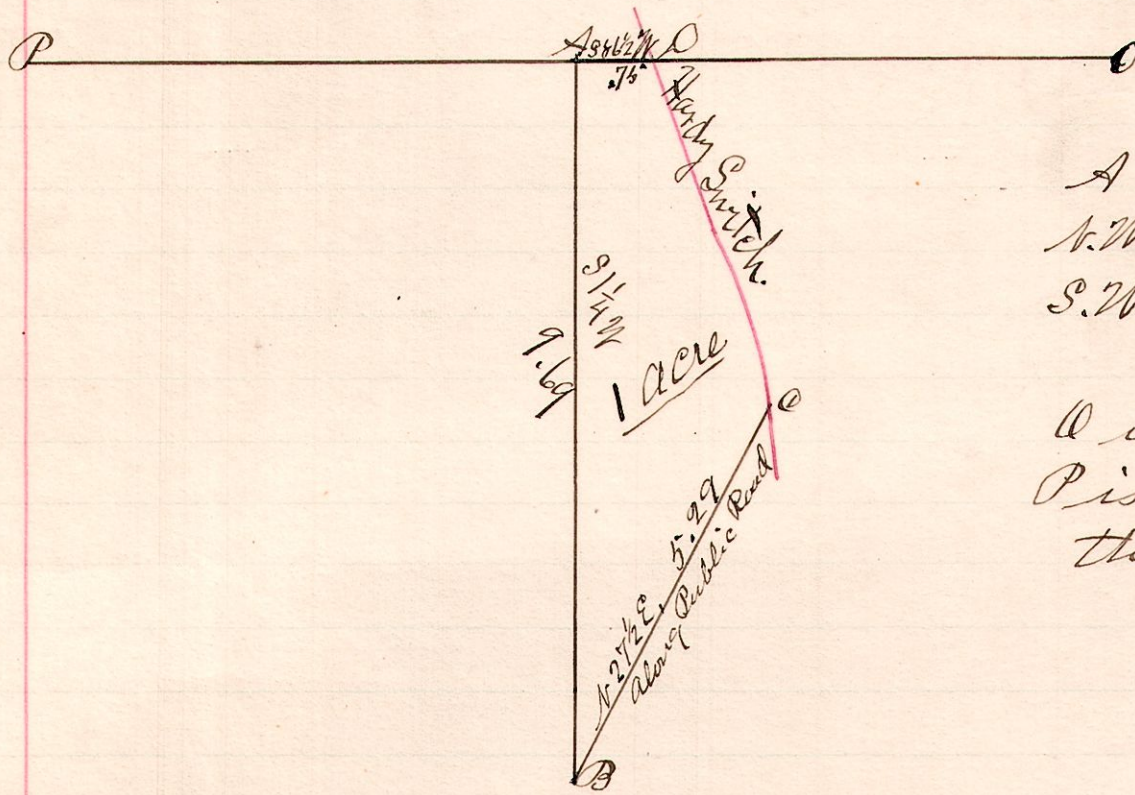
A survey made to establish the line of a county road by order of County Commissioners - A, the terminus of the road is near Sing's house in the above described section.

Feb. 3, 1887

W. S. Hanna
County Surveyor

No. 33.

7 8 3 ^E/₂



A is a stone at the N.W. corner of the E 1/2 of the S.W. 2r of Section 3

Q is center of Sec 3
P is the N.W. corner of the S.W. 2r of Sec 3.

A survey made at the request of Henry Schulters laying off a part of the E 1/2 of the S.W. 2r of Sec 3, T8, R7, and which belongs to Ch. H. Sing.

Feb 3, 1887.

W. S. Hanna
County Surveyor