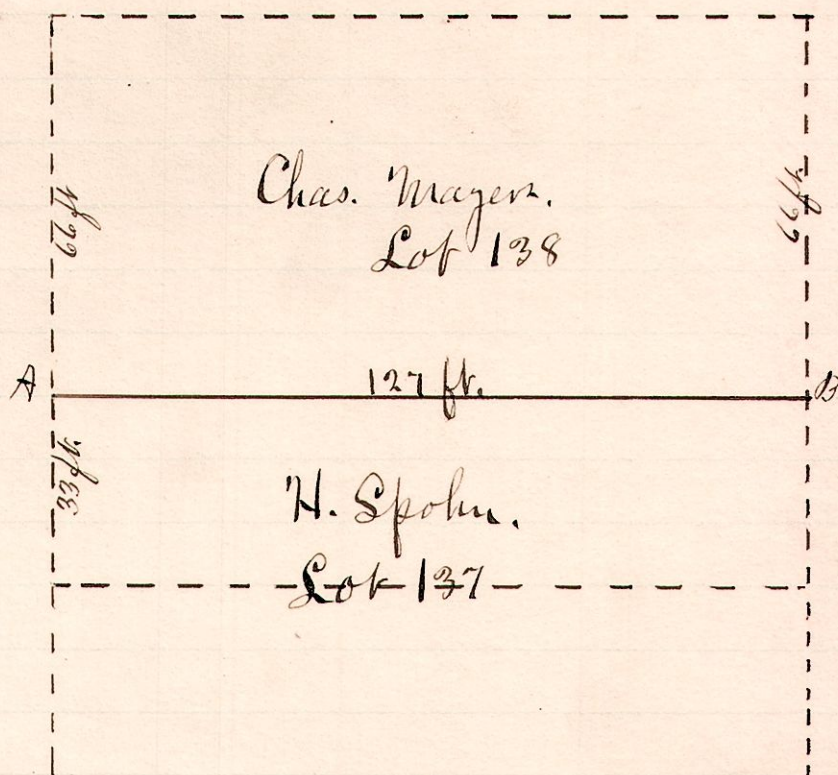


No. 30.

R 7 Sec Lot
7 9 12 137
138



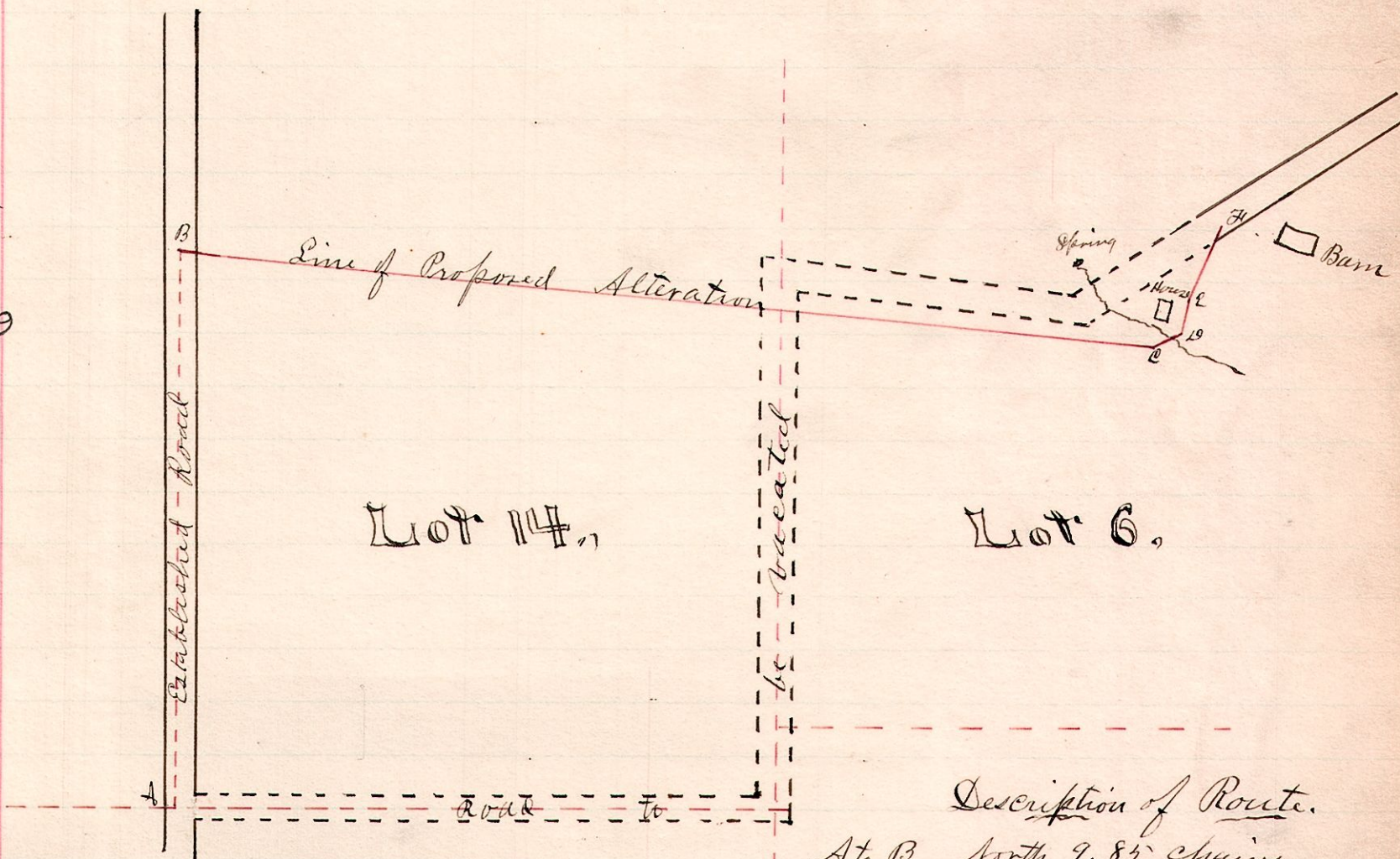
A Survey made to determine the location of boundary line between Lots 137 & 138 in village of Millersburg.

Dec. 18. 1886.

W. S. Hanna,
County Surveyor.

No. 31.

R 7 2d Lot
6 8 3d 14
15
CR 19



Description of Route.

- A to B North 9.85 chains.
- B to C S 82 1/4 E, 18.55 chains.
- C to D N 64 1/4 E, 1.71 chains.
- D to E N 12 E, 2.12 1/2 chains.
- E to F N 23 E 3.69 chains.

A is a stone on the line between lots 14 & 15
B is a point S 32 1/2 E, 31 1/2 link from white oak.

A survey made, by order of the Co. Commissioners, dated Dec 6, 1886 for the alteration of a county road petitioned for by John H. Conrad et al.

John V. Finley } Viewers
Peter Witoer }
John Masty }

Dec. 20, 1886.

W. S. Hanna,
Surveyor.

Paid Jan 87