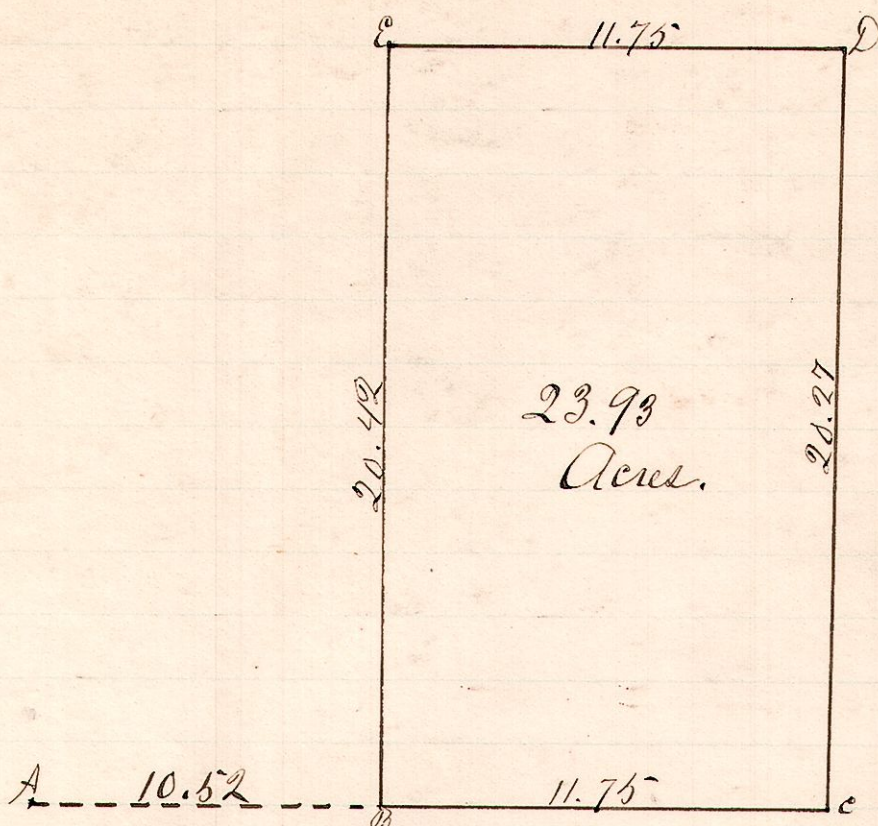


No. 28.

R 7 S 28  
13 14 32 SW



Stones set at B, C, D, E.

A is a stone at the south west corner of the south west 2r. of Sec 32, Twp. 14, Range 18.

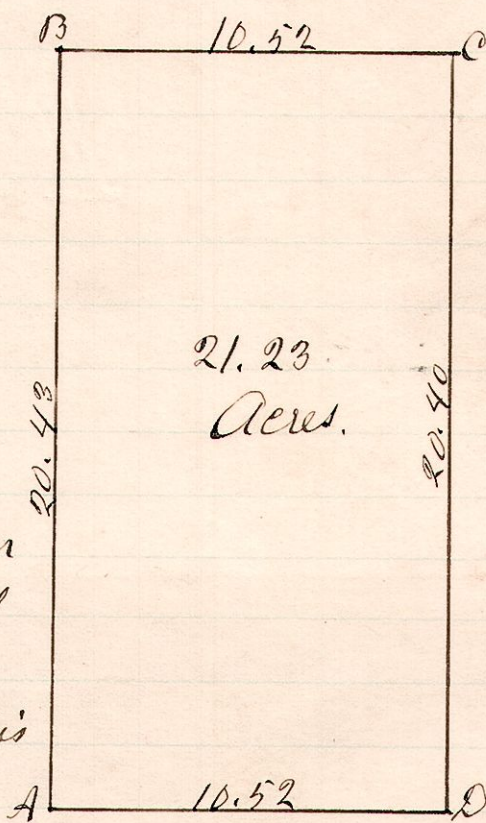
Bearing tree, white oak, standing at this corner.

The above is a correct plat of a survey made for Harvey J. Lecky Nov. 19, 1886.

C. S. Hanna  
County Surveyor

No. 29.

R 7 S 28  
13 14 32 SW



A is the south west corner of the above described 2r. Section  
Bearing tree found at this corner

Stones set at B, C & D

Variation 1/4 degree

The above is a correct plat of a survey made for Mary A. Lecky letting off her interest in the property of Jeremiah Lecky deceased and situated in R. 13, Twp. 14, Sec 32.

Nov. 19, 1886.

C. S. Hanna  
County Surveyor